

Also available in colour at [www.greatholland.com](http://www.greatholland.com)

70p where sold

# Great Holland Village Voice

Next GHRA  
meeting is on  
6<sup>th</sup> October  
at 11.30am



October & November 2018



## Job vacancy .....

Dear Readers

We have enjoyed producing Great Holland Village Voice since 2005. However, we feel that the time has come for someone else to have a go, and are seeking volunteers.

As we worked in London when we took over from the previous Editor, it suited us to produce the magazine every two months rather than monthly, as he had done. Even though we retired several years ago our lives are still just as busy, so we have continued with that routine. Our successor(s) might like to continue in that way or perhaps revert to producing a monthly magazine.

What is involved? In compiling the magazine, we liaise closely with both Churches in the village and our regular contributors. We also prepare some articles ourselves. After creating a coloured master copy, we print the magazine using the Church photocopier in Kirby-Le-Soken, which also collates the copies. The printing of an average edition takes us around 12-14 hours, spread over two days. We then distribute copies to volunteers who deliver a free copy to every household in the village. A coloured version is subsequently added to the Great Holland website.

The substantial current cost of producing a free copy of Village Voice for every household is covered largely by the revenue received from our advertisers. Sandra liaises with existing and potential advertisers - which includes creating invoices and collecting/chasing payments - and our paper suppliers too. She also prepares all accounts associated with the magazine.

It might be that our successor(s) would want to produce the magazine in a totally different way, such as by producing a monthly newsletter that would be available *only* on the village website. That would eliminate all paper/printing costs, as well as the time taken to print and distribute hard copies of the magazine. For those reasons, we have suggested previously that the magazine could be made available online only, but the idea has always been met with some opposition.

**We will produce our last edition of Village Voice at the end of November, i.e. the December 2018/January 2019 edition. If you are interested in taking over after that, please contact one of us asap to discuss. We would be happy to provide any help/guidance that our successor(s) might need to produce their first edition.**

Linda O'Reilly (852195) and Sandra Mooney (672453)  
Joint Editors





## VILLAGE CONTACTS & LOCAL INFORMATION

<b>Member of Parliament</b>	Giles Watling MP email: giles.watling.mp@parliament.uk	<b>678334</b>
<b>Residents' Association</b>	Paul Fletcher-Tomenius (Chair)	<b>675268</b>
<b>All Saints' Church</b>	Rev. Mark Holdaway	<b>675997</b>
<b>Methodist Church</b>	Rev. Chris Preece email: chris.preece@methodist.org.uk	<b>851179</b>
<b>Village Hall Committee</b>	Ms Sue Jenkins (Chair) Mrs Coralie Harris (Bookings)	<b>850317</b> <b>830136</b>
<b>The Manor</b>	Rectory Rd, Great Holland CO13 0JP	<b>440310</b>
<b>Frinton &amp; Walton Town Council</b> (incorporating Frinton, Walton, Kirby & Great Holland)	Jerry Wedge (Town Clerk) Cllr. Mr Christopher Keston	<b>676666</b> <b>850067</b>
<b>Tendring District Council</b>	Town Hall, Station Road, Clacton CO15 1SE  Cllr. Mr Robert J Bucke Cllr. Mr Mark A Cossens	<b>686868</b> Emergency/out of hours: <b>2220220</b> <b>677495</b> <b>861374</b>
<b>Essex County Council</b>	Cllr. Mr Mark Platt email: cllr.mark.platt@essex.gov.uk	<b>672551</b>
<b>Dog Warden</b>	(Tendring District Council)	<b>686787</b>
<b>Cats Protection</b>	Tendring District Branch	<b>744014</b>
<b>RSPCA</b>	National contact number: Charity Shop, Frinton:	<b>0300 1234 999</b> <b>674926</b>
<b>National Rail Enquiries</b>	National line	<b>03457 484950</b>
<b>Essex Police</b>	Non-emergency	<b>101</b>
<b>Crime Reduction Officer</b>	David Gillies	<b>101</b>
<b>Crimestoppers</b>	National line	<b>0800 555111</b>
<b>Citizens Advice</b>	(Clacton)	<b>0844 4770808</b>
<b>Tendring Dial-a-Ride</b>	Hurlingham Chambers, 61-65 Station Road, Clacton on Sea, CO15 1SD	<b>436962</b>
<b>Colchester General Hospital</b>	Turner Rd, Colchester CO4 5JL	<b>01206 747474</b>
<b>Civic Amenity Tip</b>	Maltings Lane, Kirby-le-Soken.  <b>Winter opening times</b> (16 <sup>th</sup> October - end of February): 9.00am-4.00pm  <b>Summer opening times</b> (1 <sup>st</sup> March-15 <sup>th</sup> October): 9.00am-5.00pm.  <b><u>Closed on Tuesdays and Wednesdays</u></b>	





... to the October/November 2018 edition of Village Voice.

**REMINDER:** Next meeting of Great Holland Residents Association is at the Village Hall on Saturday 6<sup>th</sup> October at 11.30am - NOT 10.00am as usual.

### Included in this edition...

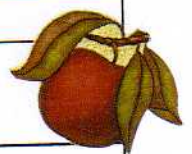
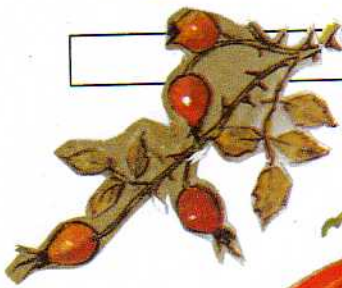
- A letter from the Chairman of GHRA
- More details about the forthcoming Quiz Night with Fish & Chip Supper at our Village Hall
- A new advertiser:  
'Access Dignity Care' - bespoke care tailored for the individual

Thank you to everyone who has contributed to this edition of Village Voice. We always welcome new contributors. Is there anything that **YOU** would like us to include in the next edition? For example:

- Are there any events happening in December 2018 or January 2019 that you wish to publicise?
- Do you have any local news items to be included?
- Do you want to tell other villagers about a local group/club?
- Can you write an article for the magazine?
- Do you want to advertise any items for sale/your business/service?

Please contact Linda on **852195** or Sandra on **672453** with details, two weeks before the printing date if possible. Please note that Sandra deals with the advertising side of the magazine. The next edition of Village Voice will be printed on:

**Monday 19<sup>th</sup> November**



### Contents

Village Contacts and Local Information

Dates for your Diary

All Saints' Church

Methodist Church

Village news & articles

Advertisements

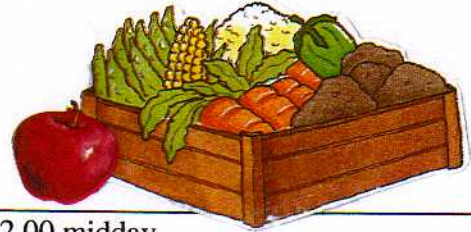




## Dates for your Diary ...



### October



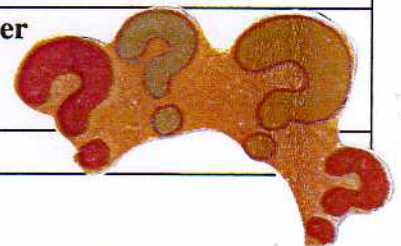
Thursday 4 <sup>th</sup>	Coffee Morning: Methodist Church, 10.30am-12.00 midday. Meeting of Friends and Neighbours of Great Holland: 2 Great Holland Court, 2.00pm.
Saturday 6 <sup>th</sup>	★ Meeting of Great Holland Residents Association ★ Village Hall, 11.30am (NOT 10.00am as usual)
Thursday 11 <sup>th</sup>	Coffee Morning: Methodist Church, 10.30am-12.00 midday.
Thursday 18 <sup>th</sup>	Coffee Morning: Methodist Church, 10.30am-12.00 midday.
Saturday 20 <sup>th</sup>	Autumn Fair with Ploughman's Lunches: Methodist Church, 10.00am-1.30pm.
Thursday 25 <sup>th</sup>	Coffee Morning: Methodist Church, 10.30am-12.00 midday.



### November



Thursday 1 <sup>st</sup>	Coffee Morning: Methodist Church, 10.30am-12.00 midday. Meeting of Friends and Neighbours of Great Holland: 2 Great Holland Court, 2.00pm.
Saturday 3 <sup>rd</sup>	Home Made Hour: Village Hall, 10.00-11.00am
Thursday 8 <sup>th</sup>	Coffee Morning: Methodist Church, 10.30am-12.00 midday.
Thursday 15 <sup>th</sup>	Coffee Morning: Methodist Church, 10.30am-12.00 midday.
Thursday 22 <sup>nd</sup>	Coffee Morning: Methodist Church, 10.30am-12.00 midday. Quiz Night with Fish & Chip Supper: Methodist Church, 7.30pm. TICKETS MUST BE PRE-BOOKED. More details inside magazine.
Saturday 24 <sup>th</sup>	★ Quiz Night with Fish & Chip Supper ★ Village Hall More details inside magazine
Thursday 29 <sup>th</sup>	Coffee Morning: Methodist Church, 10.30am-12.00 midday.



News of forthcoming local events is often given to us some time in advance. Details are printed in good faith in Great Holland Village Voice, but circumstances can change. If you plan to attend an event mentioned in Village Voice, may we suggest that you might like to use any contact number given to check in advance whether the event is still taking place, to avoid possible disappointment.

To include events for **December 2018** or **January 2019** in the Diary section of the next edition of Village Voice, please contact Linda on **852195** or Sandra on **672453** by **15<sup>th</sup> November**, if possible.





# All Saints' Church

## From All Saints' Diary - October:

Wednesday	3 <sup>rd</sup>	11.00am 2.00pm	All Saints' Bible Group in the Parish Room Friendship and Interest Group St Michael's Hall
<b>Sunday</b>	<b>7<sup>th</sup></b>	<b>11.00am</b>	<b>Morning Worship</b>
Saturday	13 <sup>th</sup>	10.00-4.00pm	<b>Chelmsford Anglican Bible Conference</b> at Chelmsford Central Methodist Church. Speaker Charlie Skrine on 'Micah, Minor Prophet, Major Impact'.
<b>Sunday</b>	<b>14<sup>th</sup></b>	<b>8.00am</b> <b>11.00am</b>	<b>Holy Communion (joint with Kirby)</b> <b>Morning Worship</b>
Wednesday	17 <sup>th</sup>	11.00pm 2.00pm	All Saints' Bible Group in the Parish Room Friendship and Interest Group St Michael's Hall
Thursday	18 <sup>th</sup>	1.00pm	Parish lunch at St Michael's Church Hall
<b>Sunday</b>	<b>21<sup>st</sup></b>	<b>11.00am</b>	<b>Holy Communion</b>
Tuesday	23 <sup>rd</sup>	2.30-4.00pm	'Teapot' at the Baker Hall. Pop in for tea, cake and a chat.
Saturday	27 <sup>th</sup>		<i>CLOCKS GO BACK</i>
<b>Sunday</b>	<b>28<sup>th</sup></b>	<b>11.00am</b>	<b>Morning Worship</b>
Wednesday	31 <sup>st</sup>	11.00am	All Saints' Bible Group in the Parish Room

## From All Saints' Diary - November:

Saturday	3 <sup>rd</sup>	10.00am	HOME MADE HOUR in the Village Hall
<b>Sunday</b>	<b>4<sup>th</sup></b>	<b>11.00am</b>	<b>Morning Worship</b>
Wednesday	7 <sup>th</sup>	2.00pm	Friendship and Interest Group in St Michael's Hall
<b>Sunday</b>	<b>11<sup>th</sup></b>	<b>8.00am</b> <b>10.50am</b>	<b>Holy Communion (joint with Kirby)</b> <b>Act of Remembrance at the Village Memorial followed by Service of Remembrance at All Saints.</b>
Wednesday	14 <sup>th</sup>	11.00am	All Saints' Bible Group in the Parish Room
Thursday	15 <sup>th</sup>	1.00pm	Parish lunch at St Michael's Church Hall
<b>Sunday</b>	<b>18<sup>th</sup></b>	<b>11.00am</b> <b>4.00pm</b>	<b>Holy Communion</b> <b>Bereavement Service at St Michael's Church</b>
Wednesday	21 <sup>st</sup>	2.00pm	Friendship and Interest Group in St Michael's Hall
<b>Sunday</b>	<b>25<sup>th</sup></b>	<b>11.00am</b>	<b>Morning Worship</b>
Tuesday	27 <sup>th</sup>	2.30-4pm	Christmas 'Teapot' at the Baker Hall
Wednesday	28 <sup>th</sup>	11.00am	All Saints' Bible Group in the Parish Room



## Home Made Hours in the Village Hall

Thank you to everyone who supported our September Home Made Hour and for the generous donations of home made produce.

As usual, there will be no Home Made Hour in October. Our next Home Made Hour takes place on **Saturday 3<sup>rd</sup> November** from 10.00-11.00am. Please join us for tea, coffee, friendly company and the sale of home made cakes, marmalade, savouries, scones etc and occasional plants/garden produce. We also have a raffle.

**The money raised at our friendly Home Made Hours is shared between All Saints' Church and Great Holland Village Hall. THANK YOU to everyone who supports these events. Can you provide any items for our Home Made Hours, please? We would be particularly grateful for donations of home made cakes, which are always popular. We also welcome home made preserves and surplus, fruit, vegetables or plants from the garden. To find out more about our Home Made Hours, please contact Nickie Stack on 677984.**



## ALL SAINTS' PARISH CHURCH WHO'S WHO

**RECTOR:** Rev. Mark Holdaway, The Rectory, 10 Thorpe Road, Kirby Cross CO13 0LT (675997)

**CHURCHWARDENS:** John Beale, 5 Malting Lane, Kirby le Soken CO13 0EH (676472)

**PAROCHIAL CHURCH COUNCIL:** Churchwardens (ex officio), Sheila Watts (ex officio), Don Osler, Vanessa Giles, Ilze Robertson, Graham Hughes and Ann Peters.

**HON. SECRETARY TO THE PCC:** Vanessa Giles

**VICE CHAIR TO THE PCC:** John Beale

**HON. TREASURER TO THE PCC:** Sheila Watts c/o The Rectory

**SIDESPERSIONS:** Rose Batten, Don Osler and Sheila Watts.

**MAGAZINE PRODUCTION TEAM:** Sandra Mooney and Linda O'Reilly (Joint Editors), Mim Wilson, Irene Lightowler, Judith Little, Audrey Warren, June Forrest, Charmian Goundry, Iain Bell, Eileen Derrick, Chris Crispin, Robert Caines, David Bavister, Sheila Watts, Phyllis Margetts, Anne Lott and Pauline Batten (Distributors).





## **The Great Holland Village and Church Fête 2018**

A very big thank you to everyone who helped in any way to make this year's fête such a success. Our final profit was £3,899.83.

**Sue Jenkins**

## **The Parish Room - All Saints' Great Holland ...**

... situated next to All Saints' Church in Church Lane, is available for bookings from the general public. The accommodation comprises a pleasant carpeted room with six easy chairs, plus seating for about a dozen people, a small kitchen with tea/coffee making facilities and microwave, entrance hall and two toilets (one disabled). Cost of hire is £5 per hour from May - September and £7 per hour October - April (to cover extra heating/ lighting costs). To hire the Hall please contact **Judith Little** on **813645**.





# Great Holland Methodist Church



**Dear friends**

Even though fruit picking goes on throughout the summer I always seem to associate it more with the Autumn. Maybe it comes from, as a child, going 'blackberrying' or remembering my grandparents preserving the fruit and tomatoes that they'd grown in the garden. There would always be a large number of jars of fruit stored in the garage from which Grandma made some wonderful apple pies and various fruit crumbles throughout the winter.

In the supermarkets today food is flown in from all over the world so the idea of truly seasonal fruit and vegetables seems to be a thing of the past. The pricing may vary as the months go on but we can get broccoli and strawberries (and everything else!) all year round. At the same time, there is also so much food waste from shops and homes as well – is this because we have so much variety and no sense of food seasons?

There is such an emphasis on reducing food waste and increasing recycling yet in its own way, preserving food by freezing it, making it into jams, chutneys, and all sorts of other ways is such a good way of doing this. In today's almost instant society we seem to forget that in days when people had so much less they made so much more of it.

There are so many inventive things that can be done with any one fruit e.g. apples which can be made into puddings, apple sauce, added to mint jelly as well as eaten on their own or added to cakes and goodness knows what else and it is the same for almost every food there is. This then takes me back to the wonders of God's creation; the awe and the wonder of the versatility of all that God created. God is so creative and imaginative it is truly awe-inspiring.

In Genesis, 'God said,' See I have given you every plant yielding seed that is upon the face of all the earth, and every tree with seed in its fruit; you shall have them for food.' Food was created by God for the good of God's people. So, maybe next time we're shopping we could stop and reflect on the many different ways in which each food could be used or think about the detail and imagination of God who created it as we look at the vast array of natural foods around the supermarket. Maybe when we've been shopping we could give thanks to God for all the different ways in which we are sustained through the food that we buy and eat and strive to do more with less. Maybe we can spare a thought for those who are struggling to make ends meet and to put food on the table and then put our faith into action as we make a donation to the Foodbank, Soup Run or other organisation who looks to support those in need in so many different ways.

God bless  
Chris



## WEEKLY COFFEE MORNINGS

We hold weekly coffee mornings at Great Holland Methodist Church Hall. They take place on **Thursday mornings from 10.30am - 12.00 midday**. Please drop in for coffee, biscuits, toasted teacakes and friendly company. We also have donated goods and hand made cards for sale.



## Forthcoming social events arranged by Great Holland Methodist Church



### Autumn Sale at Great Holland Methodist Church



Saturday 20<sup>th</sup> October

10.00am - 1.30pm

There will be various stalls. Refreshments and ploughman lunches available.

### Quiz Night with Fish & Chips Supper

Thursday 22<sup>nd</sup> November

7.30pm



**PLACES PMUST BE PRE-BOOKED PLEASE!**

Tickets available from Anne Lott on 675065

### Events arranged by Rodeo Rebels Line Dancing Group

All proceeds from these events will go to the Cancer Unit at Colchester Hospital

Saturday 13<sup>th</sup> October

Soken House, The Triangle

#### Quiz evening

Doors open at 7.15 for 7.30 start. £4 per person for teams of 6 or 8 people.

Phone Maggie on 07979 034775 if you wish to join us

Saturday 20<sup>th</sup> October

St Michael's Church Hall, The Street, Kirby le Soken. 7.30-10.30pm

#### Hunting & Poaching

A talk by local personality Norman Dennison

This will be followed by:

#### Tea/Coffee and Cakes, then Line Dancing

Some tuition for anyone who wants to have a go!

£5 per person.



Saturday 3<sup>rd</sup> November

St Michael's Church Hall, Kirby Le Soken

#### Coffee Morning and Christmas Fayre

10.00am - 12.30pm

Entrance 20p



# POLICE NEWS



## INCIDENTS .....

There have been a few incidents in the village as follows:

- Vehicle into the hedge outside the Cattery in Pork Lane. The young driver mis-judged the corner.
- Report of an unauthorised encampment on Holland Marshes. Two caravans and motor homes. These were moved on and the land vacated by 17<sup>th</sup> September.
- Road traffic accident at the end of Pork Lane onto Thorpe Road. One vehicle caused the accident and then drove off. Unknown at this time the index of the vehicle but enquiries are ongoing with traffic officers. No persons were injured.

That is all we have to report, which is good news. Thank you for keeping the village safe during what was a beautiful summer. Fingers crossed the winter will be the same

## OTHER .....

Now the nights are drawing in please make sure when you go out to LEAVE A LIGHT ON, or invest in a timer. If you have a radio put it on. It gives potential suspects the impression that someone is at home

Sgt. Gerrard will be attending the next Great Holland Residents' meeting so please come along. Sadly this will be his last one as he will be handing the baton onto another colleague. He will be seeing his last year out before retirement as a custody sergeant.

Michele

\*\*\*\*\*

You can contact Michele by calling 101, Extension 487552, or by email (see below).

**PCSO 6477 Michele Diss**  
**Walton Police Station**  
**Martello Road, Walton-on-naze**  
**Essex CO14 8BP**

[michele.diss@essex.pnn.police.uk](mailto:michele.diss@essex.pnn.police.uk)



**Frinton & Walton Heritage Trust**

Charity Reg. No. 289885



# Autumn Fayre

**Frinton Crossing Cottage Gardens**

**Apple Day**

**Apple Day**

**Apple Day**

**Apple Day**

**Apple Day**

**Apple Day**



**SATURDAY, 6th. October**

**10:30am to 2:30pm**

**Apples / Cakes & Jams / Bric-a-Brac / Books / Raffle / Tea & Coffee**

**Live Music from 'The Solo Trumpeter'**

**Museums open on the day**

**Plants & Produce / BBQ / Jewellery & Toiletries**





## GREAT HOLLAND RESIDENTS ASSOCIATION

---

**Chairman:** Paul Fletcher-Tomenius **Vice-Chairman:** Robert Caines  
**Treasurer:** Liz Oakley **Secretary:** Birgitta Fletcher-Tomenius **Planning Officer:** Eddie Forrest

Dear Friends,

Hopefully, lots of you can attend our meeting at the Village Hall on Saturday October 6<sup>th</sup>. It will start at the later time of 11.30 am, as there is a prior user.

I thought I would give you all a break this month from my dubious humour and bore you another way instead. There are a lot of changes afoot on the planning front and, as you know, opposing inappropriate development is one of the main reasons for the existence of GHRA. Now, we aren't interested in the technical stuff, but there has been a great deal of propaganda in the press about 'addressing the housing crisis' and 'increasing democracy in the planning process', both highly desirable policy objectives, but smacking of politicians' sound bites rather than actual improvements.

Two things in particular make me suspicious. Firstly, they are actually discussing taking fracking applications OUTSIDE THE PLANNING PROCESS (so-called 'Fast-Track Fracking'). Now, thankfully, I don't think our area is ripe for fracking, but even thinking about removing possibly the most controversial of all latest technology commercial activities from the planning process doesn't sound to me like an idea from someone committed to "increasing democracy in the planning process". I think it might be a good idea to find out about our own MP, Giles Watling's position on this. Secondly, statements are still being made that the planning process is holding up development and that is simply not true, since around 90% of applications are granted immediately. Misinformation about this must surely be aimed at preparing the ground for further erosion of local control.

The Campaign to Protect Rural England states that every year between 1989 and 2011 an area of greenfield sites the size of Southampton has been gobbled up, in spite of the fact that there is sufficient brownfield land to build over one million homes. Now, here in Great Holland, we have seen the effects of this on our own very small scale. Pork Lane and Little Clacton Road developments are obvious



examples. And they don't even have the excuse of providing so-called affordable housing, because these are anything but. It really isn't that difficult to insist that brownfield development is the priority, but that requires a clear commitment by local planning authorities. It must also be a long term commitment unrelated to party politics. That's not difficult either, because protecting the character of localities has almost universal support.

One figure convinces me of the seriousness of the threat and that is an analysis of emerging local plans (ours among them, of course), which together propose to build 425,000 houses on GREEN BELT LAND!!! We aren't in a designated green belt around here, but we have lots of so-called 'green spaces', which provide similar protection on a more local scale. Such mass disrespect for green belt policy naturally impacts locally. And why does this happen? Well, I am not stretching the truth by stating that nice greenfield plots are cheaper and quicker to develop, in high demand and more profitable. That's not planning policy.

Finally, just as we sought a new Treasurer last year for GHRA, we are seeking a new secretary for the next. It's not onerous and plenty of help and advice is available, so could I have a volunteer, please. By the way, our appeal for a new Planning Officer next AGM has been heard, so that's another problem solved.

Best Regards to you all,  
Paul Fletcher-Tomenius  
Chairman GHRA

---

**A date for the diary.....**

**Great Holland Residents' Association  
Meeting  
11.30 a.m. - Saturday, 6 October  
Village Hall, Manor Road**



# Bees

---



## *We have a new bee species that has colonised The Pits.*

A few years ago I wrote an article in Village Voice about bumblebees. I had attended a course and read a book about the 19 species that occurred in the British Isles. I soon became reasonably well acquainted with the 7 common ones we get locally and the two rarer species along with another 2 Cuckoo bumblebee species; these are ones which lay their eggs sneakily in other bumblebees' nests.

However there is a huge family of bee species around the world, about 25,000, of which there are a bewildering 250 in this country. Bees evolved at the same time as flowering plants, from a common wasp ancestor around 130 million years ago in the Cretaceous period, which was dominated by dinosaurs. The first fossils contain bees which became stuck in tree sap or resin which coated them and eventually turned into amber.

Some of these bees, which had a solitary lifestyle, continue to this day, in which each mated female makes a nest and lays its own eggs. However some species developed which had complex social lifestyles where a queen could influence other females in the nest to suppress their egg production and instead cause them to forage for and to tend her own eggs. The honey bee is the familiar species that does this, but few people realise that it is not really a native species in the UK. In general most bees are actually solitary not having separate workers and queens.

I have been attempting to study the local examples of solitary bees in the last 2 years, sometimes accompanying Ted Benton who is currently writing a book about them.

During the summer I observed several mining bee species. These often seek patches of bare ground, which is firm enough to create a burrow, and they dig, usually pushing grains of sand backwards with their powerful hind-legs, creating little mounds of soil reminiscent of tiny volcanoes. Eggs are laid in the hole.

Later in the year there were several types of bees called leaf cutters which use their wasp like mouth parts to neatly cut sections out of various tree leaves. They fly off with these and in some cases drag them into hollows in trees or walls. They line these holes with leaves and lay their eggs in them. They close off each egg with some leaf fragments, and go on to place another egg afterwards, thus eventually leaving a number of these eggs in a row in the cavity. The leaves form the food for the grub which develops the following year. The last eggs laid are the first to hatch and are usually male. The earlier eggs produce females. This means that the males usually disperse before there are any females, so mating with siblings is less likely.

In September, the abundance of the summer generally declines but the flowering of Ivy produces opportunities for so many butterflies and other insects. Flowering Ivy always attracts butterflies, wasps, honey bees and hoverflies. Last year I looked unsuccessfully for Ivy Mining Bees, a species new to the country but expanding rapidly. This year however they turned up. I suspect that people in the village who tolerate flowering Ivy in their garden will have these attractive bees.

## *Ponds for Wildlife meeting*

I whole-heartedly recommend the local EWT meeting at 7.30pm in Great Bentley Village Hall on 25<sup>th</sup> October. The illustrated talk is by Carl Sayer, an engaging and enthusiastic speaker who leads a project in Norfolk which is restoring ponds in the wider landscape.

**Bob Seago** Warden





**GREAT HOLLAND VILLAGE HALL COMMITTEE  
ARE HOLDING A**

**'FISH AND CHIPS QUIZ NIGHT'**

**ON SATURDAY, 24 NOVEMBER 2018**

**VENUE : VILLAGE HALL, MANOR ROAD**

**TIME : 6.30 FOR 7.00 P.M.**

**TICKETS : £7.50 PER PERSON  
WILL BE ON SALE**

**AT THE ORCHARD TEA ROOM, PARK FRUIT FARM,  
AND BY TELEPHONING 672453**

**(BRING YOUR OWN GLASSES AND LIQUID REFRESHMENTS)**

**THE COMMITTEE ARE LOOKING TO RAISE FUNDS TOWARDS  
THE COST OF DECORATION OF THE VILLAGE HALL**

**(MAXIMUM NUMBER FOR EACH TEAM IS 6)**





## **Frinton & Walton Postcard Club**

**We meet at St Cedd's Hall, Old Road, Frinton-on-Sea at 7.30pm**

Although this Club was started for those who collect, or are interested in, postcards, you do not have to have this as a hobby to join our friendly social evenings and enjoy the talks/presentations given by guest speakers on a wide variety of subjects. Visitors and potential new members will be made very welcome. The entrance fee to our meetings is £2, which includes refreshments.

**Tuesday 9<sup>th</sup> October**  
**Members' Competition:**  
**A Board of Your Choice**

**Tuesday 13<sup>th</sup> November**  
**The Slate Islands of Nether Lorn**  
Linda O'Reilly

Please telephone Margaret Wilsher on 674134 for further details

## **Frinton & District Horticultural Society**



**We meet at Frinton Methodist Church Hall, Fourth Avenue, 7.15 for 7.30pm**

**Thursday 4<sup>th</sup> October**  
**An illustrated talk on Peter Beales' roses**



Simon White  
Completion: Three stems of Nerines

**Thursday 1<sup>st</sup> November**  
**AGM**



**NEW MEMBERS ARE ALWAYS WELCOME!**

If you are interested in joining the Society, please come to one of our meetings or contact the Membership Secretary (Linda O'Reilly) on 852195 for further details.



## **FROM THE ARCHIVES .....**

As this year is the 90<sup>th</sup> Anniversary of the present Gt. Holland Methodist Church, I thought it fitting to write about one of the pioneer families who were instrumental in the building of the Church – the Harman family.

James Harman was born on 19<sup>th</sup> March 1823 (Halesworth, Suffolk) and died 14<sup>th</sup> August 1899 aged 76 years. He married Elizabeth, daughter of John Higgs of St. Matthews, Bethnal Green. They had eight sons.

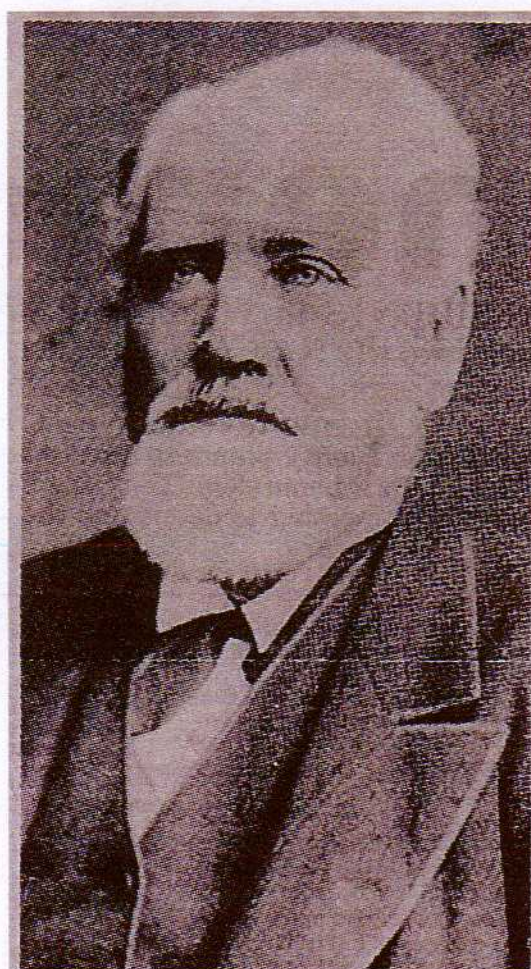
He first visited Clacton during its first summer season in 1872 when he was 46. He was an estate agent, a pioneer of Clacton along with Peter Schuyler Bruff; he also had a hand in the beginning of Frinton as a seaside town. A man of great integrity, he did much to enrich the spiritual life of Clacton. A devoted Methodist, he promised to build a chapel and until Trinity Church in Clacton was opened in 1877, his hall was used for meetings.

On August 12<sup>th</sup> 1878 he bought the Frinton Wick Farm and farmlands as far as the boundary with Gt. Holland for £5000. This was later developed into the Avenues, Tennis, Cricket and Golf Clubs from Connaught Avenue westwards. In October 1913 the Wick Farm was purchased by Frinton U.D.C. for use as their offices; eventually becoming the local library.

In 1883 he formed a new company principally concerned with the development of Frinton. His second son, John Herbert Harman, took over running the estate agent business. On retirement James Harman and his wife came to live at the Hall in Frinton.

His youngest son, Horace, lived in Frinton and owned one of the most striking properties in Connaught Avenue, namely The Galleon. At that time it was called the Bazaar. He had 3 daughters and the youngest, Alice, ran a very high class boarding house called "Ocean View", now known as White House Flats.

Gt. Holland Common Methodist Church was built in 1891 and, amongst the names on the original Trust, was John Herbert Harman. He took an active part in the running of the



James Harman (1826-99) — the most active of Clacton's pioneers.



little church as was reported in a local paper in 1900 when he chaired an evening of entertainment there. The collection was in aid of the Chapel organ fund.

In May 1928, John Harman, who was Senior Circuit Steward, presided over a large attendance for the stone-laying ceremony at the New Church and Mrs John Harman laid the second stone. At the dedication of the new edifice in September both Mr & Mrs John Harman were present and Mrs Harman 'opened' the Door of the Church.

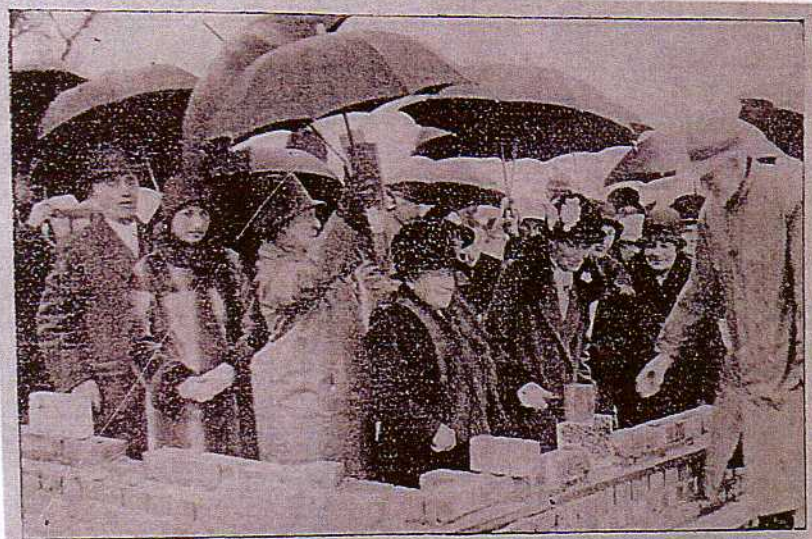


photo ]

[N. K. Harris

The Stone-Laying Ceremony.

John continued his service to Trinity Church and acknowledgment was made in a gift of the Harman Memorial Hall at Trinity by his widow, who remained at the Waverley Hotel until 1940.

Liz Bruce, Local History Recorder  
October 2018

---



## Friends and Neighbours of Great Holland

Our next meetings will be on **Thursday 4<sup>th</sup> October** and **Thursday 1<sup>st</sup> November** at 2 Great Holland Court (opposite the Village Hall), at 2.00pm. Everyone is welcome for tea, a chat and to plan activities for future meetings. Please bring your knitting or sewing if you wish.

**Phyllis Margetts: 851118**



### Tending First Ladies

We welcome everyone to our friendly group that meets on the first Monday of each month (although this can vary due to Bank Holidays), at **Frinton Methodist Church Hall** at 2.30pm. We charge £2.00 entrance at each meeting to cover the cost of room hire. A speaker talks for about half an hour before tea and home-made cakes are served. We also have a raffle.

**Monday 1<sup>st</sup> October:**

**Liz Huxley**

Colours of Autumn



**SOCIAL EVENT: ALL WELCOME**

**YOU DON'T NEED TO BE A MEMBER – PLEASE BRING A FRIEND!**

**Wednesday 24<sup>th</sup> October:**

**Soup, Sandwich & Dessert**

12.00 - 2.00pm

Tickets: £5.00



**Monday 5<sup>th</sup> November:**

**Sue Smart**

Colours of Autumn

**For more details please contact Fiona Robertson: 01255 679006 or [fiona348@btinternet.com](mailto:fiona348@btinternet.com)**

### Local events

We often receive news of forthcoming events some time in advance. We print details in Village Voice in good faith, but circumstances can change. If you plan to attend an event mentioned in the magazine, may we suggest that you might like to use any contact details given to check in advance whether the event is still taking place to avoid possible disappointment.

The Editors



## **Clacton & District Local History Society**

The Clacton & District Local History Society was formed in 1985 to research, record and promote the history of Clacton & District. The Society meets at 7.30pm on the third Thursday of each month in the Fellowship Hall at Pier Avenue Baptist Church in Clacton. A talk by a guest speaker is followed by refreshments and a raffle. Membership is £12.50 per year, which gives free entry to all meetings. The Society also has a small museum in Clacton Library. Our next meetings are:

**Thursday 18<sup>th</sup> October:**

**SOCIETY AGM**

**Followed by:**

**Nora Timmens**

Norman Jacobs

**Thursday 15<sup>th</sup> November:**

**Unknown Constable Country**

Simon Gallup

For more details please contact: **07814 456118** or visit: [www.clactonhistory.co.uk](http://www.clactonhistory.co.uk)

### **Tending Cats Protection**

## **Christmas Bazaar**

**Saturday 10<sup>th</sup> November**

10.00am - 1.00pm

McGrigor Hall, Fourth Avenue, Frinton-on-Sea

Stalls selling Christmas cards, calendars, home made cakes/produce, handicrafts, etc.

Also tombola and a raffle

Refreshments available

FREE admission but donations of cat food very welcome!



### **DISCLAIMER**

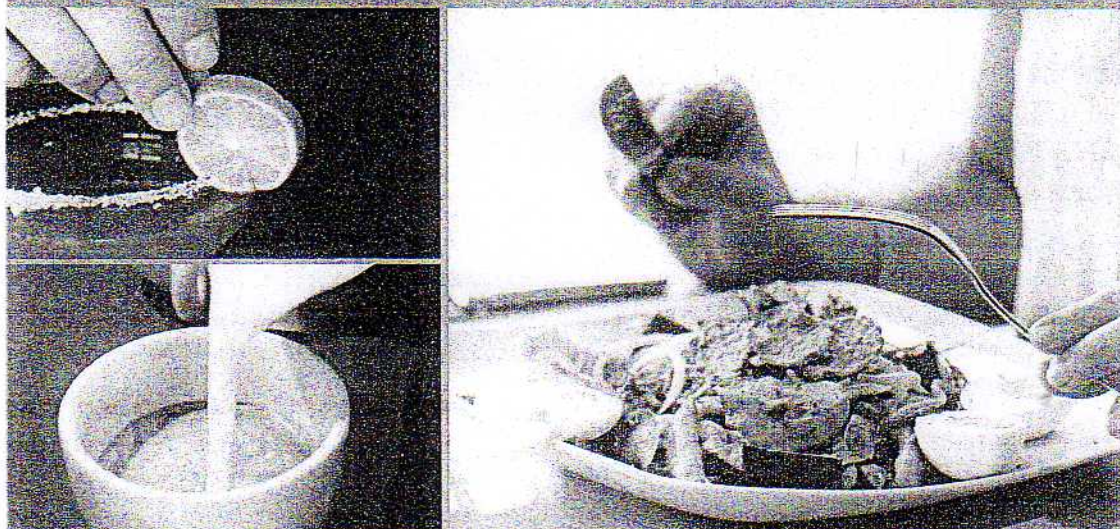
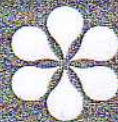
The information contained in 'Great Holland Village Voice' is published in good faith. Neither the Rector, Church Wardens, Parochial Church Council nor the Editors accept any liability in respect of the content of any article, photo or advertisement contained in the magazine. Nor is any culpability accepted for work done by advertisers.

**IF YOU CONTACT ANY OF OUR ADVERTISERS,  
PLEASE TELL THEM THAT YOU SAW THEIR ADVERT IN VILLAGE VOICE!**



lifehouse

spa & hotel



LOVE LIFE, LIVE WELL

*Whether you'd like to catch up with friends, read a book  
or get stuck into some work, our bar is open daily*

We look forward to welcoming the local community to the bar &  
restaurant for drinks and delicious food

**Booking recommended for restaurant, please phone 01255 860050**

Frinton Road, Thorpe-le-Soken, Essex CO16 0JD

[www.lifehouse.co.uk](http://www.lifehouse.co.uk)



Dr Carla Mahmoud  
Dr Mathew Kattukaran

Tel: 01255 861850



Thorpe-le-Soken Surgery  
High Street  
Thorpe-le-Soken  
Essex CO16 0EA

### **Surgery Newsletter November 2018**

Hello again from everyone at the surgery, I am writing this newsletter early as I am just about to go on my summer holiday and will miss the deadline. What a fantastic summer we have all had weather wise, I hope that everyone had the opportunity to make the most of the sunny dry days and that your gardens are recovering.

We held a Patient Participation Group Meeting in September and I was asked by the members to publicise the following information. If you would like to be on the PPG mailing list please send an email to the secretary at [ppg.thorpesurgery@nhs.net](mailto:ppg.thorpesurgery@nhs.net) The next meeting is January 9<sup>th</sup> at Thorpe Sports and Social Club, 7pm.

### **Report for PPG 13<sup>th</sup> September 2018**

#### **Appointment Statistics for August 2018**

Booked appointments 2889

Cancelled appointments 857

Booked on line 83

Did not attend appointment 130 (without notice to surgery leading to wastage)

#### **Objectives of the Patient Participation Group**

To ensure the practice list is open to all, hours of opening are fit for purpose, the ability to be seen urgently and book ahead is achievable.

Gain views and enable the practice to obtain feedback from the practice population.

Agree areas of priority.

Collate patient views by survey.

Provide opportunity to discuss survey findings and reach agreement.

Agree an action plan and formulate an agreement on how to implement changes.

Publicise actions taken and subsequent achievements.

We are now in the midst of the Flu Jab campaign as this remains the best way to prevent the spread of winter flu; it's a very big deal for the NHS as it helps to reduce hospital admissions, keeps essential staff well and most importantly protects the most vulnerable people in our society. Flu jabs are offered on the NHS to children between 2 and 16 years, everyone over 65 and those with qualifying chronic diseases; carers are also eligible. I would urge anyone who is eligible or cares for someone who is to get the jab booked as soon as possible to get protected before the bugs are circulating.

Best wishes until next time.

Karen Austen

---

Branch Surgery:






88 Frinton Road, Kirby Cross, Essex CO13 0HJ

Email: [thorpelesoken.surgery@nhs.net](mailto:thorpelesoken.surgery@nhs.net)  
Website: [www.thorpe-le-sokensurgery.nhs.uk](http://www.thorpe-le-sokensurgery.nhs.uk)

VAT No: 879 1018 03



# What's on in your Village Hall?

Day	Morning	Afternoon	Evening
<b>Sunday</b>	AVAILABLE FOR HIRE	AVAILABLE FOR HIRE	AVAILABLE FOR HIRE
<b>Monday</b>	AVAILABLE FOR HIRE	<b>Tendring Male Voice Choir</b> 3.00-4.30 p.m. Contact: Ilze813909 	<b>Cardio Vascular exercise</b> 6.45-7.30 p.m.  <b>Pilates</b> 7.30-8.30 p.m. Contact: Claudine 862505
<b>Tuesday</b> 	<b>Fantari Dance and Fitness</b> 9.30-10.30a.m. Contact: Sarah-Jane 688740  <b>Gentle Tai Chi with meditation</b> 11.00a.m.-12.30 p.m. Contact: Ruth 07724 133702	<b>Carpet Bowls</b> 1.45-3.45 p.m. Contact: Sheila 851855  	<b>Links Karate</b> 5.30-7.30 p.m. Contact: Paul Harris 830136
<b>Wednesday</b>	<b>Yoga</b> 9.30-11.00a.m & 11.00am-12.30p.m Contact: Srina 07835 730593	<b>The Coastal Singers</b> (mixed voices)2.30-4.30 p.m. Contact: Ilze 813909 	<b>Aerobics</b> 7.00-8.00 p.m. Contact: Claudine 862505  <b>Badminton</b> 9.00-10.30 p.m.  671300
<b>Thursday</b>	<b>Tai Chi</b> 9.30-12.30p.m. Contact: Des Exworth 679610 (additional classes available)	AVAILABLE FOR HIRE	<b>Links Karate</b> 6.30-7.30 p.m. Contact: Paul Harris 830136
<b>Friday</b>	AVAILABLE FOR HIRE	AVAILABLE FOR HIRE	<b>Links Karate</b> 6.00-8.00 p.m. Contact: Paul Harris 830136
<b>Saturday</b>	<b>Home Made Hour</b> 10.00-11.00a.m. First Saturday of month (NOT January, February, August or October)	AVAILABLE FOR HIRE	AVAILABLE FOR HIRE
<b>Rate for hire of Village Hall</b>			
£10 per hour. Please contact Coralie Harris on 830136 to book. (Email: <a href="mailto:coralieh@live.co.uk">coralieh@live.co.uk</a> )			

Updated September 2018