



Also available in colour at [www.greatholland.com](http://www.greatholland.com)



# Great Holland Village Voice

Minutes of  
last GHRA  
meeting  
inside!

## Winter



February & March  
2015


70p where sold





... to the February/March edition of **Village Voice**.

## Included in this edition...

- Minutes of the recent GHRA meeting
- Details of the 2015 Frinton Music Festival 
- A heart-warming 'lost and found' story
- A plea for new bell-ringers!



Thank you to everyone who has contributed to this edition of Village Voice. We always welcome new contributors. Is there anything that **YOU** would like us to include in the next edition? For example:

- Are there any events happening in April or May that you wish to publicise?
- Do you have any local news items to be included?
- Do you want to tell other villagers about a local group/club?
- Can you write an article for the magazine?
- Do you want to advertise any items for sale/your business/service?

Please contact Linda on 852195 or Sandra on 672453 with details, two weeks before the printing date if possible. **Please note that Sandra deals with the advertising side of the magazine.** The next edition of Village Voice will be printed on:

Monday 23<sup>rd</sup> March

# Winter



## Contents

Village Contacts and Local Information

Dates for your Diary

All Saints' Church

Methodist Church

Village news & articles

Advertisements







## Village Contacts and Local Information

<b>Member of Parliament</b>	Mr Douglas Carswell MP	<b>423112</b>
<b>Residents' Association</b>	Paul Fletcher-Tomenius (Chair)	<b>675268</b>
<b>All Saints' Church Minister</b>	Rev. Mark Holdaway	<b>675997</b>
<b>Methodist Church Minister</b>	Rev. Eva Walker	<b>851179</b>
<b>Great Holland Village Hall Committee</b>	Ms Sue Jenkins (Chair)	<b>850317</b>
	Mrs C Harris (Bookings)	<b>830136</b>
<b>The Ship Inn</b>	Jacqui Omer	<b>674809</b>
<b>Frinton &amp; Walton Town Council</b> (Incorporating Frinton, Walton, Kirby and Great Holland)	Mrs Myrna Liles (Town Clerk)	<b>676666</b>
	Cllr. Mr Christopher Keston	<b>850067</b>
<b>Tendring District Council</b>	Town Hall, Station Road, Clacton CO15 1SE  Cllr. Mr Robert J Bucke Cllr. Mr Mark A Cossens	<b>686868</b> (Emergency/ Out of Hours: <b>2220220</b> ) <b>677495</b> <b>861374</b>
<b>Dog Warden</b>	(Tendring District Council)	<b>0845 2417253</b>
<b>RSPCA</b>	<b>0300 1234 999</b>	
<b>Essex County Council</b>	Cllr. Mr Michael (Mick) Page	<b>672410</b>
<b>Neighbourhood Watch Administrator</b>	Please call <b>101</b> and ask to speak to Paul Teague.	
<b>Crime Reduction Officer</b>	Please call <b>101</b> and ask to speak to David Gillies.	
<b>Crimestoppers</b>	<b>0800 555111</b>	
<b>Essex Police non emergency</b>	<b>101</b>	
<b>Essex Fire &amp; Rescue non emergency</b>	<b>01376 576000</b>	
<b>Citizens Advice Bureau</b>	<b>0844 4770808</b>	
<b>Coastguard Service</b>	<b>01255 675518</b>	
<b>Colchester General</b>	<b>01206 747474</b>	
<b>National Rail Enquiries</b>	<b>08457 484950</b>	
<b>Tendring Dial-a-Ride</b>	<b>01255 436962</b>	
<b>Mobile Library</b>	Calls fortnightly every other Thursday at <b>Rosery Mews</b> only. Arrives 10.00am, departs 10.30am - see Diary page for dates.	
<b>Civic Amenity Tip</b> Maltings Lane, Kirby-le-Soken	<p><b><u>The Civic Amenity Tip is closed Tuesdays and Wednesdays</u></b></p> <p>Opening times:  <b>Winter</b> (16<sup>th</sup> October - end of February): 9.00am- 4.00pm   <b>Summer</b> (1<sup>st</sup> March-15<sup>th</sup> October): 9.00am-5.00pm            Late night opening during summer no longer takes place.</p>	





# Dates for your Diary ...



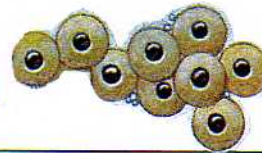
## February



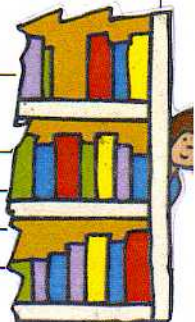
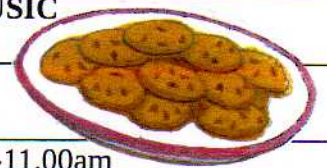
Monday 2 <sup>nd</sup>	<b>Tendring First Ladies meeting:</b> Frinton Methodist Church Hall, 2.30pm. <b>AGM.</b> More about this friendly social club inside magazine.
Thursday 5 <sup>th</sup>	<b>Coffee Morning:</b> Methodist Church, 10.30am-12.00 midday. <b>Meeting of Friends and Neighbours of Great Holland:</b> 2 Great Holland Court (opposite Village Hall), at 2.00pm.
Friday 6 <sup>th</sup>	<b>Street Meets by Essex Police</b> - Come and meet your PCSOs and discuss any issues you may have: Great Holland Village Hall, 10.00-11.00am (every Friday morning)
Thursday 12 <sup>h</sup>	<b>Coffee Morning:</b> Methodist Church, 10.30am-12.00 midday. <b>Mobile Library visits Rosery Mews.</b>
Friday 13 <sup>th</sup>	<b>Street Meets by Essex Police:</b> Great Holland Village Hall, 10.00-11.00am
Thursday 19 <sup>th</sup>	<b>Coffee Morning:</b> Methodist Church, 10.30am-12.00 midday.
Friday 20 <sup>th</sup>	<b>Street Meets by Essex Police:</b> Great Holland Village Hall, 10.00-11.00am
Sunday 22 <sup>nd</sup>	<b>Charity Quiz Night at The Ship:</b> Starts 8.00pm
Monday 23 <sup>rd</sup>	<b>Great Holland Folk Club:</b> Church Parish Room (next to All Saints' Church), 7.30pm. More details about this new monthly club inside magazine.
Wednesday 25 <sup>th</sup>	<b>A concert by 'The Music Makers' - Great Holland Methodist Church</b> 7.00pm More details inside magazine
Thursday 26 <sup>th</sup>	<b>Coffee Morning:</b> Methodist Church, 10.30am-12.00 midday. <b>Mobile Library visits Rosery Mews.</b>
Friday 27 <sup>th</sup>	<b>Street Meets by Essex Police:</b> Great Holland Village Hall, 10.00-11.00am



## March



Monday 2 <sup>nd</sup>	<b>TFL meeting:</b> Frinton Methodist Church Hall, 2.30pm. <b>'Village Folk' - local musicians playing traditional music from the British Isles.</b>
Thursday 5 <sup>th</sup>	<b>Coffee Morning:</b> Methodist Church, 10.30am-12.00 midday. <b>Meeting of Friends and Neighbours of Great Holland:</b> 2 Great Holland Court, 2.00pm.
Friday 6 <sup>th</sup>	<b>Street Meets by Essex Police:</b> Great Holland Village Hall, 10.00-11.00am
Saturday 7 <sup>th</sup>	 <b>HOME MADE HOUR WITH LIVE MUSIC</b> Village Hall, 10.00-11.00am.
Thursday 12 <sup>th</sup>	<b>Mobile Library visits Rosery Mews.</b> <b>Coffee Morning:</b> Methodist Church, 10.30am-12.00 midday.
Friday 13 <sup>th</sup>	<b>Street Meets by Essex Police:</b> Great Holland Village Hall, 10.00-11.00am
Thursday 19 <sup>th</sup>	<b>Coffee Morning:</b> Methodist Church, 10.30am-12.00 midday.
Friday 20 <sup>th</sup>	<b>Street Meets by Essex Police:</b> Great Holland Village Hall, 10.00-11.00am
Wednesday 25 <sup>th</sup>	<b>Film Night: 'The Admirable Crichton' - Great Holland Methodist Church</b> 7.00pm More details inside magazine
Thursday 26 <sup>th</sup>	<b>Coffee Morning:</b> Methodist Church, 10.30am-12.00 midday <b>Mobile Library visits Rosery Mews.</b>
Friday 27 <sup>th</sup>	<b>Street Meets by Essex Police:</b> Great Holland Village Hall, 10.00-11.00am
Sunday 29 <sup>th</sup>	<b>Charity Quiz Night at The Ship:</b> Starts 8.00pm
Monday 30 <sup>th</sup>	<b>Great Holland Folk Club:</b> Church Parish Room, 7.30pm.

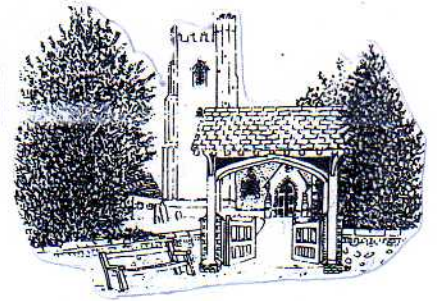


Please ring Jacqui on 674809 for details of events at The Ship during February and March

To include events for **April or May** in the Diary section of the next edition of **Village Voice**, please contact Linda on 852195 or Sandra on 672453 by **15<sup>th</sup> March** if possible.



# All Saints' Church



## Rector's article ...

Thank you to all those who joined us for Christmas at All Saints! It was lovely to welcome you to Carol Singing around the tree, our Christingle Family Service (supporting the Children's Society) and our Carols by Candlelight on Christmas Eve. It was wonderful to have the Tendring Male Voice Choir and so many in the congregation to make it such a special evening. If you missed it, then put it in your diary now, 6.30pm on Christmas Eve!

But as soon as one thing ends, another begins, and here at All Saints we're already looking forward to a number of things.

**Epic Explorers Holiday Club.** Together with St. Michael's Church, Kirby we're running a Holiday for 3 mornings in half-term for those children in years reception to year 6. If you know someone who is interested, get in touch or pick up a form from inside All Saints.

**Mothering Sunday** will be on 15<sup>th</sup> March and we'll be having an All Age Service at All Saints at 11am. There will be something for everyone and posies to give to Mums and others.

To keep you going, here's a mother's day joke.

**Elephant:** Why do mother kangaroos hate rainy days?

**Hippo:** I give up.

**Elephant:** Because their kids have to play inside!

And finally, we're also thinking ahead to **Easter**. We've got our fun "Easter Eggstravaganza" with lots of Easter Crafts at St. Michael's Church Hall in Kirby-le-Soken on Good Friday at 10am. If you'd like to have a chance to really think about what Easter means, then we have our quiet "Hour at the Cross" at All Saints at 2pm on Good Friday. Finally, our Easter All-Age celebration takes place on Easter Sunday at 11am.

You'd be very welcome to join us at anything we're doing.

**Mark**



## From All Saints' Diary - FEBRUARY:

<b>Sunday</b>	<b>1<sup>st</sup></b>	<b>11.00am</b>	<b>Morning Service</b>
Wednesday	4 <sup>th</sup>	11.00am 2.00pm	All Saints' Bible Group in the Parish Room Friendship & Interest Group at St Michael's Church Hall
<b>Sunday</b>	<b>8<sup>th</sup></b>	<b>8.00am</b>	<b>Joint Holy Communion with our friends from St Michael's</b>
		<b>11.00am</b>	<b>Morning Service</b>
Wednesday	11 <sup>th</sup>	2.00pm	All Saints' Bible Group in the Parish Room
<b>Sunday</b>	<b>15<sup>th</sup></b>	<b>11.00am</b>	<b>Holy Communion</b>
Wednesday	18 <sup>th</sup>		Ash Wednesday at St Michael's
		2.00pm	Friendship & Interest Group at St Michael's Church Hall
Thursday	19 <sup>th</sup>	1.00pm	Parish Lunch at St Michael's Church Hall
<b>Sunday</b>	<b>22<sup>nd</sup></b>	<b>11.00am</b>	<b>Morning Service</b>
Tuesday	24 <sup>th</sup>	2.15pm	TeaPot at the Baker Hall
Wednesday	25 <sup>th</sup>	11.00am	All Saints' Bible Group in the Parish Room



**Note: A Lent Course will be held on 25<sup>th</sup> Feb and 4<sup>th</sup>, 11<sup>th</sup> and 25<sup>th</sup> March at 7.30pm at St Michael's Church Hall**

## From All Saints' Diary - MARCH:

<b>Sunday</b>	<b>1<sup>st</sup></b>	<b>11.00am</b>	<b>Morning Service</b>
Wednesday	4 <sup>th</sup>	11.00am 2.00pm	All Saints' Bible Group in the Parish Room Friendship and Interest Group in St Michael's Church Hall
Saturday	7 <sup>th</sup>	10.00am	HOME MADE HOUR 
<b>Sunday</b>	<b>8<sup>th</sup></b>	<b>8.00am</b>	<b>Joint Holy Communion with our friends from St Michael's</b>
		<b>11.00am</b>	<b>Holy Communion</b>
Wednesday	11 <sup>th</sup>	11.00am	All Saints' Bible Group in the Parish Room
<b>Sunday</b>	<b>15<sup>th</sup></b>	<b>11.00am</b>	<b>All Age Mothering Sunday Service</b>
Wednesday	18 <sup>th</sup>	2.00pm	Friendship and Interest Group in St Michael's Church Hall
Thursday	19 <sup>th</sup>	1.00pm	Parish Lunch at St Michael's Church Hall
<b>Sunday</b>	<b>22<sup>nd</sup></b>	<b>11.00am</b>	<b>Morning Service</b>
Tuesday	24 <sup>th</sup>	2.15pm	TeaPot at the Baker Hall
Wednesday	25 <sup>th</sup>	11.00am	All Saints' Bible Group in the Parish Room
<b>Sunday</b>	<b>29<sup>th</sup></b>	<b>11.00am</b>	<b>Palm Sunday Morning Service</b> (Clocks go forward) 





## **Home Made Hours**

Our friendly Home Made Hours help to raise funds for All Saints' Church. **THANK YOU** to everyone who supports these events, particularly those who regularly donate home made/home grown produce for us to sell.

Are YOU able to provide any items for our Home Made Hours, please? We would be particularly grateful for donations of home made cakes, which are always popular. We also welcome home made preserves and any surplus fruit, vegetables or plants from the garden. **If you want to find out more about our Home Made Hours, please contact Nickie Stack on 677984.**

### **ALL SAINTS' PARISH CHURCH WHO'S WHO**



**RECTOR:** Rev. Mark Holdaway, The Rectory, 10 Thorpe Road, Kirby Cross CO13 0LT, (675997)

**CHURCHWARDENS:** John Beale, 5 Malting Lane, Kirby le Soken CO13 0EH (676472) and Judith Little, Lambourn House, Little Clacton Road, Great Holland, CO13 0EY (813645)

**PAROCHIAL CHURCH COUNCIL:** Churchwardens (ex officio), Sheila Watts (ex officio), Don Osler, Vanessa Giles and Ilze Robertson

**HON. SECRETARY TO THE PCC:** Judith Little

**VICE CHAIR TO THE PCC:** John Beale

**HON. TREASURER TO THE PCC:** Sheila Watts c/o The Rectory, 10 Thorpe Road, Kirby Cross CO13 0LT, (675997)

**SIDESPERSIONS:** Rose Batten, Don Osler and Sheila Watts

**MAGAZINE PRODUCTION TEAM:** Sandra Mooney and Linda O'Reilly (Joint Editors), Mim Wilson, Irene Lightowler, Michele Frere, Ingrid Harding, Judith Little, Eric Elsworth, Audrey Warren, June Forrest, Charmian Goundry, Iain Bell, Eileen Derrick, Pauline Knight, Christine Oxford and Chris Crispin (Distributors)

### **Church Hall - All Saints' Great Holland**

The Church Hall is situated next to All Saints' and is available for bookings from the general public. The accommodation comprises a pleasant carpeted room with six easy chairs, plus seating for about a dozen people, a small kitchen with tea/coffee making facilities and microwave, entrance hall and two toilets (one disabled). The cost of hire is £5 per hour from May - September and £7 per hour October - April (to cover extra heating and lighting costs). To hire the Hall please contact **Judith Little on 813645.**



# FROM THE REGISTERS

## FUNERALS:

We offer our condolences and prayers to the family and friends of the following:

**Clarence Smith (77)** Rosery Mews, Great Holland All Saints' and burial



## Home Made Hours - now with Live Music too!

Thank you to everyone who supported our Christmas Special Home Made Hour and for the generous donations of home made goods and produce.

As usual, there will be no Home Made Hour in February. Our next Home Made Hour takes place on **Saturday 7<sup>th</sup> March**. Please join us for tea, coffee, friendly company, the sale of home made cakes, jam, marmalade, trifles, savouries, scones etc and occasional plants/garden produce, and music played by Great Holland's very own Village Folk. Refreshments are available and we also have a raffle.

## Bells at All Saints'

There are 10 bells in the Tower at All Saints', 8 cast in 1930 by a company called John Taylor of Loughborough, and 2 ancient bells circa 1380 and 1486. The 8 bells were given to the church and village by the Barron Bell Trust in 1930 in memory of its foundress, Emma Barron, who was a local lady.

Recently the bells were inspected by John Taylor & Co. the original installers - over the years very little maintenance has been carried out and the water leaking from the roof of the Tower did not help. The Tower has been repaired and is now in good heart and there are some who feel it would be good to refurbish the bells. Depending on the work done, the costs would start at a minimum of £5,000 increasing to £20,000. There are charities which would help, money would not be the problem, but we have to ask ourselves, if the bells are not rung what would be the point?

**Is it possible that there are people in Great Holland who would be interested in learning to ring, or there may be people who have rung before and would like to ring again?.**

If you are at all interested in getting the Great Holland bells ringing again, a 'phone call to Judith Little **813645** or John Beale **676472** would be much appreciated.

John Beale  
(Churchwarden and Bell Ringer)





Walton and District Community  
**FoodBank**

*Can you help us by making a donation?*

***We need foodstuffs such as:***

Soup – Tinned or Packet  
Tinned Meat – Stewing beef, Ham,  
Corned Beef, Sausages, Steak &  
Kidney Pudding, Chicken Pie...  
Tinned Fish – Tuna, Salmon,  
Pilchards...  
Potatoes – Tinned or Instant Mash  
Vegetables – Peas, Carrots, Sweet  
Corn, Tomatoes, Baked Beans...  
Long Grain Rice – bags or sachets  
Pasta – Dry or Tinned in sauce  
Pasta Sauces, Cook-In Sauces  
Table sauces & Condiments– Tomato  
Ketchup, Brown sauce, Salt, Pepper  
Tinned Fruit – Peaches, Pears,  
Apricots, Mandarin Oranges...  
Tinned Custard or Rice Pudding  
Packet Pudding Rice  
Jelly  
Packet deserts – e.g Instant whip  
Tea  
Coffee  
Cocoa / Drinking Chocolate  
Sugar  
Milk – UHT cartons or Tinned  
Fruit Squash  
Breakfast Cereals  
Biscuits and snack bars  
Preserves – Jam, Honey, Marmalade,  
Peanut Butter, Chocolate Spread...  
Children's treats

***And hygiene items like:***

Washing-up Liquid  
Washing-up Sponges / Cloths  
Household Cleaners  
Washing Powder  
Kitchen Paper  
Soap  
Toothpaste  
Toothbrushes  
Shampoo  
Shower Gel  
Deodorant  
Towels  
Face Flannels  
Toilet Rolls  
Nappies  
Sanitary Towels

***Unfortunately we cannot accept any Out of Date tins, jars or packets. Nor any fresh or perishable foods such as:***

Fresh fruit or vegetables  
Fresh fish, meat or poultry  
Bread, cakes or other bakery products  
Eggs  
Milk (except Long-life UHT)  
Cheese, butter, or other dairy products  
Any Chilled or Frozen foods

**Walton and District Community FoodBank**

*In Association with*

**Walton Churches Together**

*Providing emergency Food Aid to the most needy in our community*

**Dick Bloxside, Administrator, Walton & District Community FoodBank**

**Phone (Office): 07926 015 276 / Email: team.walton.foodbank@gmail.com**



# Great Holland Methodist Church



## Freedom of speech

I sit to write this article as the world is still shocked with what happened in Paris when shootings took place at the satirical magazine Charlie Hebdo.

The victims and their families are in my mind, and I keep thinking of what happened.

And I am not thinking of it simply because it happened on our doorstep. This tragedy made me think of all the murders that happen because someone speaks their mind.

I think of all the oppressive regimes around the world, where people need to be really careful of what they say.

I think back of the communist country I was born and the fear of people being themselves.

I wonder if you heard the social media statement: 'I am Charlie!?' It circulated straight after the deadly attack, as people were showing solidarity with the victims of Charlie Hebdo. In saying: 'I am Charlie!' they were saying that they stand for freedom of speech.

Did you also hear the social media statement: 'I am Ahmed!?'

In the hours following the attack, the media and our support was for the victims of the satirical magazine. Yet there were two policemen killed in the attack as well. They were people tasked to protect Charlie Hebdo's staff. Whether they agreed with its publishing or not, they were there to protect that freedom of speech.

And one of them was called Ahmed Merabet, himself a Muslim.

He died to protect Charlie Hebdo's right to ridicule his religion. Somebody commented: 'I don't agree with what you have to say, but I'll defend to the death your right to say it.'

Isn't this comment, and many other comments; and all the support for all the victims beautiful and very meaningful?

In a world that finds itself in a lot of conflict, we want freedom, freedom of speech and we want to protect that freedom.

Jesus came, The WORD of God made flesh, to show us how to live, to give us freedom, freedom of belief and freedom of speech. With his life, he showed us how to fully respect freedom of speech, which includes listening as well as talking.

With his life he showed us how to stand up against injustices, not from a place of judgement, but from a place of love.

In his death and resurrection, he gave us victory over death, of good winning over bad, and of love winning over evil.

As we struggle with the injustices of this world, as we hurt alongside others, as we pray for them, as we make our way in this life, may we do so in the footsteps of Jesus, starting always from a place of love, knowing that love has already won!

God's blessings,

**Rev. Eva Walker**



## News from Great Holland Methodist Church

It seems ages ago now, but we thought you would like to hear about our activities before Christmas. It was a very busy, but enjoyable time.

The '**Christmas Fayre**' on 29<sup>th</sup> November was a huge success. We were thrilled with the numbers who supported us and bought goods and enjoyed Ploughman's lunches. The event raised £421.69 for our Church Funds. The central heating boiler will need replacing soon, so this will help our New Boiler Fund.

Additionally, a stall manned by Maddy Whittle raised £120 for Action for Children and Methodist Homes.

The '**On a Starry Night**' weekends were successful and enjoyed by over 200 people. The decorations were stunning, the centrepiece being the stable with the Nativity Scene. Each window sill depicted a Christmas carol. The kitchen team were kept busy serving home made soup, hot sausage rolls and a variety of delicious cakes and pastries and of course tea and coffee! The stalls were busy selling a variety of goods - books, CDs, home made cakes, jewellery, gifts etc.



*Our beautifully decorated church*

The '**All Things Christmas**' evening on Thursday 18<sup>th</sup> December was a wonderful evening. The church was packed, and we were treated to carols and Christmas songs sung by the 'St Philomena's Singers' and 'St Phil's Connexion'. They sang beautifully and enthusiastically and the congregation joined in for several carols and songs. A big thank you to the choirs.

Following the concert warm, non-alcoholic mulled punch and mince pies were served. We were pleased that on that evening £180.00 was raised for the Ebola crisis.

A big thank you to everyone who supported these events.



# Great Holland Methodist Church

Wednesday 25<sup>th</sup> February  
7.00pm



A concert by 'The Music Makers'

FREE ADMISSION

Donations for St Helena Hospice welcome

Wednesday 25<sup>th</sup> March  
7.00pm



Film Night:

The 1957 film 'The Admirable Crichton'

Refreshments - including ice cream - will be on sale

There is no charge to see the film, but **please book your place** so that we have an idea of numbers for catering.

**WE DO HOPE YOU WILL JOIN US FOR THESE EVENTS. ALL WELCOME.**

For further information/tickets, please call Anne on 675065  
or call in at the coffee mornings held at the Methodist Church on Thursday mornings.



## Thursday Coffee Mornings

We hold coffee mornings in Great Holland Methodist Church Hall, **every Thursday morning from 10.30am - 12.00 midday**. Please drop in for coffee, biscuits, toasted teacakes and the chance to make new friends. We also have donated goods for sale. We'd love to see YOU there!





# GREAT HOLLAND RESIDENTS ASSOCIATION

**Chairman:** Paul Fletcher-Tomenius **Vice-Chairman:** Robert Caines  
**Treasurer:** Denys & Lindy Strich **Secretary:** Louise Goodwin & Hazel Martin:  
**Planning Officers:** John Poulton, Tom Sandy & Eddie Forrest

Dear Residents,

There was another good turnout for the GHRA meeting on a cold, winter Saturday and that was very heartening. This month, Gary Guiver from Tendring District Council Planning gave up his time to update us on progress of the local plan. Sadly, this is being delayed by the imminent election, but we had a lucid explanation of the process and some assurances regarding Great Holland. When the revised 'village envelope' is published (also called 'the settlement boundary'), we can expect to see a number of extensions to this proposed in the previous draft dropped, in favour of something more closely aligned with the boundary shown in our own Village Design Statement. It was also important for a senior officer from planning to experience questioning from the floor, which emphasised the active and involved character of the association.

We had a longish discussion about speeding in the village. We all know about the problem on Little Clacton Road, but the emphasis this time was on Manor and Rectory Roads, plus Church Lane. The sole casualty so far is one unlucky cat, but that was no consolation to the owner and certainly no cause for celebration by animal lovers. These are quiet residential roads, narrow, made narrower by parked cars and we are not being thoughtful enough. I know agricultural and delivery vehicles are partly to blame, but we have to be honest about our (the residents') behaviour also.

There's a good slogan around that covers it:

## **TWENTY'S PLENTY!**

There's good science to back it up! At 20mph, almost all victims survive. At 30mph, most don't. At 40mph, hardly anyone survives! Those are the facts. We shall be leafleting the village and the intention is to mount the Community Speedwatch activity in these side roads, so please give this some thought. Tell friends and family about it also.

There was also concern about a possible used car business operating in Great Holland. If this is happening off street, it is a breach of planning controls and we will ask for enforcement proceedings to be undertaken by the council. If it is happening on street, it is a criminal matter and will be dealt with accordingly. The police have now been alerted to the problem and residents affected by street parking of untaxed vehicles are making notes to pass on to the authorities. With the abolition of tax discs, just ask our local PCSOs, Michelle and Paul, to check the database, which they can access. The phone number is 07850631017. If one of those people responsible happens to be reading this, I suggest you take the hint and go somewhere else or, better still, start obeying the law! If you know the people, then perhaps you would let them know they have been rumbled.

One last thing is to remember to pay your 2015 subscription if it is still outstanding.

Best Regards to you all,

Paul Fletcher-Tomenius





# Great Holland Residents' Association MEETINGS

17<sup>th</sup> January 2015  
In the Village Hall

## MINUTES

### Committee Members Present:

Chairman Paul Fletcher-Tomenius  
Robert Caines  
Eddie Forrest  
Alan Large  
Tom Sandy  
Louise Goodwin  
Hazel Martin  
Sandra Mooney  
Sheila Watts  
Denys Strich  
Lindy Strich  
John Poulton  
Linda O'Reilly

### 1. APOLOGIES FOR ABSENCE

Apologies were received from Sylvia Nicoll, Graham Hughes, David Martin and Brian and Judy Little.

Chairman Paul Fletcher-Tomenius welcomed the Chairman of Kirby Residents' Association to the meeting.

### 2. MINUTES OF THE GHRA HELD ON 4<sup>th</sup> OCTOBER 2014

The Minutes were accepted.

### 3. MATTERS ARISING FROM THE MINUTES

There were no matters arising.



#### **4. LOCAL PLAN- UP DATE BY MR GARY GUIVER OF TDC**

Gary Guiver, Planning Policy Manager at TDC reported on the current position of the new District Local Plan.

Gary explained the local Councils have a duty to prepare a local plan which shows areas for development and areas for protection and include policies the council will use to determine planning applications they receive. The idea is that Councils have to keep these plans up to date. We have a local plan designed in 2007 and this expired in 2011.

The problem for councils with an out of date plan is that when they receive planning applications, the current Government guidelines suggest they should approve those applications regardless. The only reason any application should be refused is if the proposed application is harmful to the area!

The Council has therefore been working on a new plan to take us forward; the draft was published in 2012 for consultation. In that plan it was suggested that the rate of housing development would be 400 houses per year across the whole district, broadly the rate before the economic crisis. Councils proposed every town and village would see a 6% increase in housing and therefore the larger the town or village the larger the amount of housing development. The reason for this proposal was that during previous public consultation exercises, many residents said they would prefer to see housing spread across different parts of the district rather than as in the past, concentrated on the edge of larger towns such as Clacton and Harwich, which were contentious in their time!

When the 6% figure was published, it was popular in places such as Clacton and Harwich as numbers were distributed across the district, but were not so popular in the villages such as Gt. Holland and Kirby le Soken, as to accommodate extra housing meant the village envelope had to be redrawn.

The problem councils face now is that the 400 houses proposed per annum is not enough to meet need over the next 15-20 years and current government guidelines are to therefore allow 700 per annum. The council is now required to plan for this although these proposed rates have not been seen since the boom of the 1980s. These figures are based on Government projections and a local plan committee has been set up to oversee the Local Plan, which will then have to go to public consultation twice before a planning inspector makes the final decision.

Our Local Planning Committee has met four times. The largest developments are proposed in Clacton, near Gorse Lane, the Bishops Park Area of Clacton, Colchester University area, and Weeley, the latter being the most contentious due to the massive implications relating to population increase, effects on local schools and the increase in traffic.

Gary went on to say that with a local and general election on the horizon, there may be changes with regard to both councilors and government policy on all the above matters. Therefore no final decisions can be made until after elections and members for the Local Plan Committee can be confirmed.



With regard to Great Holland, the council is looking at tightening boundaries further, as they are aware there is much concern. However, we will not be able to see the new boundary until after the election and the plan is made public.

A major concern at the moment is that we have no Local Plan and the expectation of the government is that the council should approve applications unless there is something dramatically wrong with them. If the council refuses an application it can still be taken to appeal, and be overturned by a planning inspector. At the current time the council is seeing a large number of applications being made which are contrary to the local plan: 145 houses in Alresford, 150 in Great Bentley, and 3 applications amounting to 90 houses in Elmstead. Recently an application for 49 houses in Frating was refused due to the councils concern over the lack of schools, a Doctors Surgery and few other facilities within the village. No appeal has yet been lodged, but one is still possible and the council's decision could be overturned.

Gary hoped this information was of help to everyone present, and was happy to then answer any questions arising. One resident stated that the area is being spoiled by so much housing and development is getting out of hand, and then referred to an article published in the local paper dated 15<sup>th</sup> January 2015 quoting a new figure of 12000 houses for the area. Gary stated that both council officers and councilors feel that this figure is far too many and not realistic. The current figures are standing at around 200 per annum and even in the last housing boom, figures were only 400 per annum. Currently Colchester Borough Council, Chelmsford Borough Council and Braintree District Council are employing Consultants regarding such figures and Tendring District Council is in discussion with them to try and bring levels down to a sensible level.

Another resident questioned the use of the previous design statement and local plan and if these were used when deciding new planning applications. Gary replied that national government policy comes first, the local plan second, and design guides after that. Some of the 2007 policies do apply, but not on housing numbers, Green Gaps are really not supported in national policy, although members are very keen that these should not be taken out of the plan.

Gary went on to say that the need for housing is driven by people wanting to move to an area, not by the amount of births and deaths.

Paul then thanked Gary for his time and attending the meeting.

#### **5. THORPE SURGERY: STEPHANIE DURRANT PRACTICE MANAGER SPEAKS ABOUT THE PATIENT PARTICIPATION GROUP**

Stephanie thanks GHRA for inviting her along to the meeting and reminded us that her colleagues had come to speak before Christmas to explain their takeover of the Kirby Cross Surgery. Stephanie wanted to update us on the takeover and talk about patients' involvement in the Patient Participation Group.

Doctor Carla explained before Christmas that both Caradoc and Walton Surgeries had problems with a lack of GPs; however Thorpe surgery has never had that issue. Thorpe have been working closely with the Walton and Frinton surgery to try and help our area of Tendring to stabilise patient numbers at each practice, ACE have now taken over the running of the Caradoc surgery with Stephanie for the current time.



The benefit to Thorpe surgery is to become larger, of a more average size, they have now taken over the Kirby Surgery, taken on 10 new members of staff, including 1 full time Doctor, 1 part time Doctor, a new practice matron and 2 new nurses, as well as some more clerical staff. 900 new patients have also already joined them.

The management group consists of 3 doctors and Stephanie. All new ideas are taken via the management group to the PPG and no major decisions are made without the PPG being involved. Stephanie asks anyone who is registered with them and interested, to please get involved; dates are available from the surgery, as they want to make the surgery the very best it can be for the patients who go there. If anyone encounters any problems with the surgery please speak to Stephanie straight away and she will do her utmost to sort the problem immediately.

Paul thanks Stephanie for attending, and a number of residents also thanked her for the outstanding service and care they have received from the Thorpe surgery and its staff.

#### **6. PCSO REPORT**

PCSO Michelle Diss reported to the meeting: from October 2014 to January 2015 there had been 6 minor RTAs, mainly on the marshes, report of a suspicious person in Pork Lane late at night on 1<sup>st</sup> November, dressed in a Halloween outfit, no trace upon police arrival. Theft of a motor vehicle from Church Lane on 13<sup>th</sup> November, keys had been left in the car, vehicle was later found in trade and 2 males were later arrested. A theft of charity monies from an event held at a local establishment, enquiries are in hand currently with the allocated officer to trace the tenant responsible.

PCSO Diss brought attention to the new Essex Community Messaging service run by Essex Police. You can log on and register at [www.essex.police.uk/ecm](http://www.essex.police.uk/ecm) to receive up to date information about the policing and community safety issues that affect us all.

#### **7. SPEEDING IN CHURCH LANE**

A resident of Church Lane raised concerns over the speed of traffic in Great Holland, especially in Church Lane, Manor Road and Rectory Road, Church Lane being the worst due to the blind bend towards the top of the lane and no pavements. Cars have been seen speeding from the Main road down both Manor Road and Rectory Road and the same issue in Church Lane when they speed from The Ship at the top and slow down towards their final destination further down the lane. The resident also mentioned that apart from the speed, there is an issue with cars parking on the bend near The Ship Public House, making the roads very dangerous for walkers, children, and horses. The resident went on to suggest that maybe by speaking to our neighbours and friends who visit and asking them to slow down, hopefully the situation will improve. A decision was made that the GHRA should produce a leaflet suggesting a 'good neighbour' attitude to speeding and parking in the whole of Great Holland. This hopefully would be of benefit to all and could be distributed via the Village Voice magazine. A further suggestion that the community speed watch could be arranged to visit Church Lane to monitor speed and hopefully bring the issue to the attention of both residents and drivers may be a good idea.

Cllr. Bucke reported that the Community Speed Watch team needs one more member and should anyone wish to join them and be trained, they would be very welcome.



## **8. TREASURER'S REPORT**

At the end of 2014 GHRA held a Bank Balance of £2596.06 plus £81.51 held in cash, giving a total of £2677.57. The Association had a total of 111 members, an increase from 62 members in 2012. Should any residents wish to join, you can at the next meeting, the date of which is published at the end of the minutes. GHRA accounts are now ready for audit ready for presentation at the AGM in May. However, this is a very busy time for our auditor and if anyone would be kind enough to volunteer or knows anyone who might be willing to audit our accounts we would be most grateful.

## **9. AMENDMENT OF SIGNATORIES TO GHRA's CURRENT BANK MANDATE TO INCLUDE PRESENT CHAIRMAN AND SECRETARY**

A resolution was passed that the current Chairman and Secretary should be added to the bank mandate as signatories; all other details are to remain the same. The resolution was proposed by John Poulton and seconded by Alan Large; the resolution was carried unanimously.

## **10. ANY OTHER BUSINESS**

The chairman had been asked by Mr. and Mrs. Hutley of Pork Lane to advise the meeting that they were sending a letter to be published in the Village Voice regarding the caravans on their land in Pork Lane.

Cllr. Robert Bucke has again approached ECC regarding the street light at the end of Manor Road. At the current time they have not done what he is asking, and seem to be ignoring all his requests, however Robert will continue to chase for some action.

Cllr. Robert Bucke also mentioned that the works in Church Lane, Manor Road and Rectory Road had been actioned following the Chairman serving a repair notice on ECC. There are still works to be completed and these have been chased up. The Chairman advised that a repair notice must only be used in exceptional circumstances. However, if any residents see an area in need of repair, report the defects to GHRA and we will pass details on to ECC.

Cllr Robert Bucke reported that there is currently an application in progress to reopen the village shop and the new occupant hopes to open by February, although at the present time this seems to be a very optimistic date.

The raffle was drawn at the end of the meeting, and a vote of thanks given to Sheila Watts for doing the Teas and Coffees, also to Louise Goodwin for organizing the raffle.

**The meeting ended at 11.45am**



**The next meeting is to be held on  
9<sup>th</sup> May 2015  
at 10.30am  
in the Village Hall.**



**THIS LETTER, ADDRESSED TO THE CHAIRMAN OF THE GREAT  
HOLLAND RESIDENTS' ASSOCIATION, IS INCLUDED IN THE MAGAZINE  
AT THE REQUEST OF MR & MRS HUTLEY**

**BIRCH HOE FARM PORK LANE  
GREAT HOLLAND ESSEX CO13 0ER**

Mr Paul Fletcher-Tomenius

Chairman

Great Holland Residents Association

8<sup>TH</sup> January 2015

Dear Chairman and Residents of Great Holland,

**Re: Great Holland Village Voice Dec 14/Jan15 ; Item M of your report**

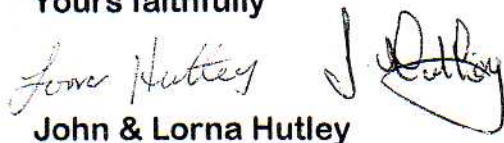
Would you please note that your Treasurers comment regarding change of use has been done without planning permission is incorrect.

We had two appointments with the Planning Officer at Tendring District Council and several phone calls and a site visit. The temporary caravan site has been done with the guidance of Tendring District Council who have helped with plans and advice so that we did not break any planning laws. We would like you to know that we are allowed to have 5 caravans on our land without any planning permission required at all but as we were going to have more than 5 we went and duly paid our planning fee and went through the correct procedure to get planning permission. Our planning application went through and Tendring District Council gave it full approval.

We would appreciate that this is noted and that it will now clear up any concerns that the people of the village may have.

We also wish to reiterate we are firstly and foremost an arable and livestock farm and we are purely trying to provide for the sea defence workers. As soon as all the work has been completed the caravans will be gone and the area of the field will be opened back up to allow the sheep to graze and that we have no intention of ever making this a permanent caravan park.

Yours faithfully

  
John & Lorna Hutley

A Hutley & Son.



## RARE QUADS BORN ON NEW YEAR'S EVE



Andrew Hutley, who lives at Birch Hoe Farm in Pork Lane, is pictured holding the lambs.

The Hutley family have been breeding sheep since 2001 and has a prized pedigree flock of Southdowns. Originally a scan showed the mother was having triplets so it was quite a surprise when a fourth lamb appeared.

The family are looking forward to showing them in the farming shows later in the year.

*Photo courtesy of the Frinton & Walton Gazette*

### LOCAL NEWS FROM CLLR. ROBERT BUCKE

#### **VAZ Sign**

Cllr. Bucke is continuing to chase this matter on behalf of the residents.

#### **Rectory Road/Main Road Street Light**

As above.

#### **Other Outstanding items**

During a recent meeting with Cllr Mick Page it has been agreed that a detailed schedule of long-outstanding matters relating to Great Holland be sent to Cllr. Page for consideration of action by Essex County Council, subject to current and projected budget constraints.

#### **Speedwatch Team**

Robert is delighted that Stephen Turner has joined the Speedwatch Team, joining Lucy Margetts and others, to help encourage slower speeds through the village. He hopes that one more volunteer comes forward to complete a Great Holland team of three, to set a standard for elsewhere in our area, with teams in each town and village, all working together and independently, according to availability.



# STREET MEETS BY ESSEX POLICE

(Come and meet your PCSOs and discuss any issues you may have)

Every Friday Morning at Gt. Holland Village Hall  
Manor Road, Gt. Holland  
10.00 a.m. – 11.00 a.m.

## INCIDENTS .....

I am unable to include all incidents that have been reported due to their sensitive nature. (Reports from 21/11/14 to date)

- 4 x Road traffic accidents – all mainly on the marshes due to either bad weather or misjudging of the bends. There was one on the roundabout by the Lions Den and the driver has been reported to the DVLA.
- 1 x House alarm activation – set off in error (all in order)
- 2 x Suspicious circumstances – both all in order
- 1 x Theft – Funds raised from local event to go towards the Village Hall were not passed over. Enquiries in hand with allocated officer to trace person responsible.

## NEWS .....

Detectives have issued an urgent warning to residents across Essex following a sudden surge in phone calls by fraudsters posing as police officers or bank officials. A number of homes in the Grays, South Ockendon and Brentwood areas were targeted on 14 January but fortunately no money was taken and the attempts were reported to the police.

The incidents are the latest in a series of crimes in which mainly elderly people are targeted and tricked into revealing their bank details or handing over large sums of cash. Police would never ask you for your bank details or ask you to transfer or withdraw funds. If you do receive calls like these do not fall for their claims. If you are suspicious about a telephone conversation you should end the call and contact the police on non emergency 101. Remember to use a mobile phone or a friend's phone or wait at least 5 minutes before calling to ensure you aren't reconnected to the offender. Please also remember that your bank and the police would:

- NEVER** ask for your bank account details or PIN number over the phone,
- NEVER** ask you to withdraw money and send it to them, and
- NEVER** ask you to send them your bank cards or any other personal property

Keep safe.

PCSO 70843 Paul Brassey  
PCSO 6477 Michele Diss  
Walton Police Station  
Martello Road  
Walton-on-naze  
Tel: 101, ext.487553  
Community Phone No. 07850 631017

[paul.brassey@essex.pnn.police.uk](mailto:paul.brassey@essex.pnn.police.uk)  
[michele.diss@essex.pnn.police.uk](mailto:michele.diss@essex.pnn.police.uk)





## Lost and Found

On New Year's Eve my wife and I went for a beautiful walk across the fields, over the golf course and along the promenade at The Haven. How wonderful it was to stop and look at the Brent Geese flying over the fields and to watch the stunning sea on a chilly, frosty winters morning.

On arriving back, ready for a warming cup of coffee I was dismayed to find my wedding ring gone from my finger. Being a cold day, it must have slipped off.

As soon as I could, I searched everywhere we had walked, turned the whole house upside down, checked with friends we had visited and shops I had been in, asked anyone I knew that walked that way to please look out for it and phoned the Police.

As the days slipped by I became resigned to the fact it must have gone for good, destined perhaps to be dug up 1000 years from now and put in a museum of exhibits from a bygone age. Not the start to the 2015 I had wished for.

10 days later I suddenly thought of the one person I hadn't asked. The Farmer. I left a message on his phone and he very kindly rang me back. Some days before, he had found an odd piece of crumpled paper floating about. He could just make out the words 'MATTHEW-RING' but any other information was indecipherable due to the weather playing its part. Thinking it to be of no importance he had forgotten about it, as any of us would. Very kindly he allowed me to put up some posters along the route across the fields where we walked that day and near to where he found the note.

Well, guess what - the very next day I got an amazing call from a very kind couple who had found the ring! They had found my wedding ring exactly where I had looked at those geese. I now realise that the ring must have come off with my gloves as I took them off to get out my binoculars and it must have dropped onto the muddy path. Luckily, because of the frost, the ring didn't disappear under the mud. They saw the inscription inside the ring with 'MATTHEW' on it and it was they who had attached the note 'MATTHEW - RING' with their contact number to a post before the wind and rain caused its downfall. My new friends walk the same path regularly and had seen one of the posters the morning after I had put them up. They called me straight away.

This whole episode is a wonderful big tick for human nature and shows what I always believe, most people are good at heart - a nice thought at a time of so many troubles - good deeds still happen all the time in our everyday lives.

A very 'BIG' thank you then to the heroes of this tale. Roger and Margaret Frere for telling me about the cryptic note and allowing me to put up lots of posters on their land, and to Glenda and Steve Smith for finding my wedding ring, writing the note and keeping my wedding ring safe for me until they finally found its owner.

My finger just didn't feel the same without it! A lesson in teamwork, not giving up hope and getting your wedding ring resized if it's too big for your finger!

Matthew Gough





# Great Holland Pits Nature Reserve

## Holland Brook

I have always been fond of fishes. I took to angling when I was very young and I am keen on rivers teeming with life. I seldom find much time for fishing these days but one day in November when I had been checking the ponies at Great Holland Pits, I noticed the land rover and equipment of the Environment Agency down by the Fan Bridge. I went to talk to the team who had a boat with an instrument that passes an electric potential into the river through a metal pole that causes the fish to involuntarily rise to the top to be caught and examined.

I could see that they had caught decent numbers of small eels. These have been very scarce in the UK for about twenty years. In the 1970's I used to observe them slivering up the brick revetments of the Rice Bridge at Thorpe, to obtain access to a pipe coming from a ditch emerging in to the brook.

I asked how the team were getting on, and they surprised me by saying they had caught a brown trout. Now trout indicate good water quality, and in order to breed successfully they require good gravel banks in the stream, not features present in that part of Holland Brook. I had never seen nor heard of trout in the brook, but sure enough they pulled a net out of the water and there was one along with a flounder. What an odd combination of species! Flounders are sea fish which are happy to come into fresh water, and are occasionally seen in the brook along with tiny sea bass. In fact several were caught along with a few Grey Mullet, another fish of inshore waters.





They caught a large haul of roach and carp with a few rudd. They also had tiny sticklebacks and stone loach. This was surprising to me but I guess that I have never thought to look for them.

Clearly there are good populations of fish in the river but I have some concerns. The water levels in the brook are controlled by the sluice at Holland Haven. At high tide a flap closes under the pressure but at low tide the water is free to go out. There is however a board which retains some water in the brook. In summer this is set to maintain a good depth of water, but currently in winter it is set so the depth of the channel is very shallow. This has the effect of emptying the fleets, the channels at right angles to the main channel. I watched one swan mussel a large mollusc trying to navigate its way through the ooze to find some water. The marshes are important for lots of invertebrates and fish fry which occupy these fleets, so under this low water condition I expect them to be disadvantaged.

The reason for the low water conditions are to try to prevent flooding of the marsh but in practice the meadows still quickly become inundated if there is appreciable rain.

I am intending to do some general surveys of this river for mammals and invertebrates, in a Biodiversity Project. I am also in contact with a representative of the Environment Agency and expect to discuss ways in which the river can be improved.

**Bob Seago**  
Warden



## **TENDRING ACTIVITY DAY**



**Tuesday 17<sup>th</sup> February**

Doors open at 9.45am

*Bradfield Community Centre*

### **SPEAKERS:**

**Roz Hall**

Poems

**Liz Bruce**

'Make do and mend'

**Linda Scoles**

'Good intentions'

Home made cakes, pies and goodies on sale

Craft Stall, raffle

Refreshments and lunch available

**TICKETS (£7.50) ON SALE NOW – Please ring Joan on 851069 to book**

**A GREAT DAY OUT!**



# FRINTON FESTIVAL 2015

## Saturday 23<sup>rd</sup> May at 7.30pm

A choral and ensemble extravaganza featuring **Horovitz's** Captain Noah and his floating Zoo performed by The Coastal Singers & the Tendring Male Voice Choir with Duncan Archard (*piano*) plus music by **Mozart, Rossini, Françaix** and **Roussel** performed by Sophie Lockett (*violin*), Tim Crawford (*viola*), Robert Max (*cello*), Ilze Robertson (*harp*) & Catrin Price (*flute*).

St. Mary's Church, Old Road, Frinton-on-Sea

## Sunday 24<sup>th</sup> May at 3pm

The Barbican Piano Trio at world-renown Arts and Crafts architect C. F. A. Voysey's "Homestead", 43 Second Avenue, Frinton-on-Sea.

**Mozart** Piano Trio in E, **Fauré** Piano Trio, **Tchaikovsky** Piano Trio

*Concert-goers can enjoy at 10% discount on lunch at AVENUE BISTRO before the concert – booking essential*

## Bank Holiday Monday 25<sup>th</sup> May at 11am

**Mozart** Divertimento in E-flat, **Bach** C major Cello Suite & **Amani** String Trio played by Sophie Lockett (*violin*), Rosalind Ventris (*viola*) & Robert Max (*cello*)

in the 11<sup>th</sup> century Old Church, Old Road, Frinton-on-Sea

*Join us after the concert at the STAR OF INDIA where a special £8.95 LUNCH will be available to ticketholders – pre-booking essential*

## Bank Holiday Monday 25<sup>th</sup> May at 7.30pm

Seven singing cellists of the MASSIVE VIOLINS, including festival director Robert Max, at Frinton Tennis Club, Holland Road. Genius arrangements of some of the best pop and rock songs alongside classical masterpieces & 1930s Jazz. The eclectic programme includes songs by Britney Spears, Mozart, Queen, Puccini, Clean Bandit, Evelyn Dall, Johnny Cash, Jack Buchanan & from the Sound of Music & Matilda the Musical....

*Ticketholders can enjoy a free WINE TASTING courtesy of WHEELERS WINE CELLAR, Dedham from 6.30pm at the Tennis Club*

## Tuesday 26<sup>th</sup> May at 7.30pm

**Mozart** String Quintet in G minor, **Afanassieff** Double Quartet & **Taneyev** String Quintet in C across the fields in All Saints Church, Church Lane, Great Holland.

Mathilde Milwidsky, Tim Crawford & Freya Goldmark (*violins*), Rosalind Ventris, Sophie Lockett & Jo Eun Shim (*violas*), Robert Max & Elizabeth Porter (*cellos*)

*Join us after the concert at The Ship Inn where ticket-holders can enjoy a 20% discount on their meal. Pre-booking essential.*

Tickets cost £15 and include a glass of wine generously sponsored by **WHEELERS WINE CELLAR, Dedham**. Seating is unreserved and tickets should be booked in advance by calling **Joan Ellis** on 01255 674192 or emailing her at [frintonfestival@gmail.com](mailto:frintonfestival@gmail.com)  
**www.frintonfestival.com**



# Great Holland



# FOLK CLUB



We meet on the **LAST MONDAY** of the month

All Saints' Church Hall  
Church Lane, Great Holland CO13 0JS



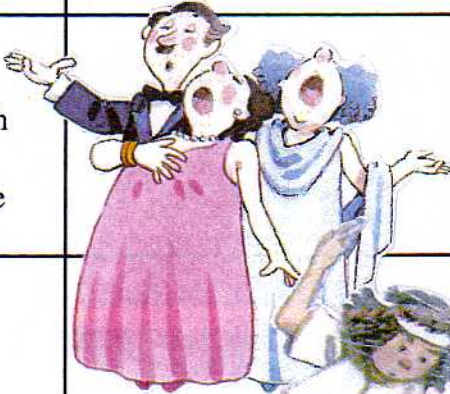
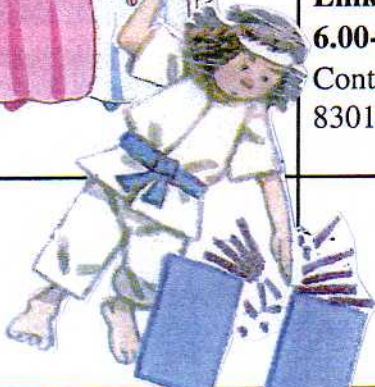

7.00 -9.30pm

For more details please ring either **676372** or **852195**



# WHAT'S ON IN YOUR VILLAGE HALL?



Day	Morning	Afternoon	Evening
<b>Sunday</b>			
<b>Monday</b>		<b>Tendring Male Voice Choir</b> 3.00–4.30pm Contact: Ilze 813909 	<b>Cardio Vascular</b> 6.45–7.30pm  <b>Pilates</b> 7.30–8.30pm Contact: Claudine 862505
<b>Tuesday</b>	<b>Fantari Dance and Fitness</b> 9.30-10.30am Contact: Sarah-Jane 688740  <b>Gentle Tai Chi with meditation</b> 11.00am-12.30pm Contact: Ruth 07724 133702	<b>Carpet Bowls</b> 2.00-4.00pm Contact: Les Miller 671214	<b>Links Karate</b> 5.30-7.30pm Contact: Paul Harris 830136  <b>Badminton</b> 9.00-10.30pm 671300 
<b>Wednesday</b>		<b>The Coastal Singers (mixed voices)</b> 2.30-4.30pm Contact: Ilze 813909	<b>Aerobics</b> 7.00-8.00pm Contact: Claudine 862505
<b>Thursday</b>	<b>Tai Chi</b> 9.30am-12.30pm Contact: Des Exworth 679610 (additional classes are available)		<b>Belly Dancing</b> 7.00-8.00pm Contact: Almeira Carmichael 07900 241630 / 01255 678297
<b>Friday</b>	<b>Beginners Tap</b> 11.15am-12.15pm Contact: Ester Altin 07785 728920		<b>Links Karate</b> 6.00-8.00pm Contact: Paul Harris 830136
<b>Saturday</b>	 <b>Home Made Hour</b> 10.00-11.00am 1 <sup>st</sup> Saturday of the month (NOT January, February, August or October)		

### Rate for hire of Village Hall

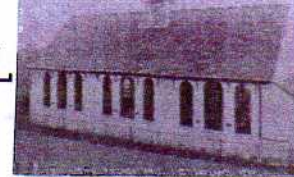
£10 per hour. Please contact Coralie Harris on 830136 to book. (Email: [coralieh@live.co.uk](mailto:coralieh@live.co.uk))

Updated January 2015

Neither the Rector, Church Wardens, Parochial Church Council nor the Editors take responsibility for the information given in, or views expressed in, the "Great Holland Village Voice". Nor is any culpability accepted for work done by advertisers.



# GREAT HOLLAND VILLAGE HALL



## Quiz night on 6<sup>th</sup> December 2014

Thank you to all who attended the quiz night, it was good to see so many there. We made a profit of £207. 00. Also a big thank you to Ben Eagle for the music he entertained us with, and our thanks to Jim for being quiz master and helping to make the quiz fun.

We would also like to wish Jim well and hope he is out of hospital and well on the mend.

## New classes at our Village Hall

We have a new booking for a ladies **Beginners Tap Lesson session** - all welcome. Starting Friday 23<sup>rd</sup> January at 11.15am for one hour. (Initially for four weeks only).

Contact details - **Ester Altin: 07785 728920**

We have a new weekly **Belly Dancing class** starting the first week of February, on Thursday evenings at 7.00-8.00pm.

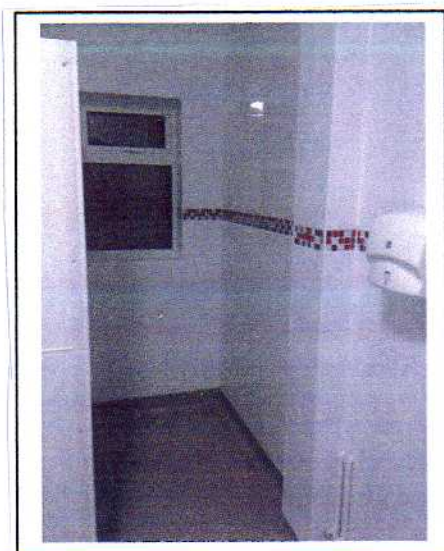
Contact details - **Almeira Carmichael: 07900 241630 / 01255 678297**

## Ladies toilets

After a long wait the ladies toilets are now completely refurbished, long gone is the damp, dusty smell, along with the plastic hanging off the walls. If you have not seen them, do come along to one of the weekly events or the next Home Made Hour on Saturday 7<sup>th</sup> March.

**Sue Jenkins** (Chair)

The Village Hall Committee





## Frinton & District Horticultural Society

PLEASE NOTE THAT OUR MEETINGS NOW TAKE PLACE ON THE FIRST THURSDAY OF THE MONTH AT FRINTON METHODIST CHURCH HALL, FOURTH AVENUE, FRINTON-ON-SEA AT 7.00 for 7.30pm

Thursday 5<sup>th</sup> February

**A talk by Melvyn Prentice as Head Gardener at Brackstead Park**

Thursday 5<sup>th</sup> March

**A talk by Mr Bendall: 'A Gamekeeper's Year'**

If you are interested in becoming a member of the Society, please come to one of our meetings or contact the membership secretary on **852195**. The current annual membership subscription is £7.

## Frinton & Walton Postcard Club



This Club was started for those who collect, or are interested in, postcards, but you do not need to have this as a hobby to join our friendly social evenings and enjoy the talks/presentations given by guest speakers on a wide variety of subjects. Visitors and potential new members will be made very welcome. The entrance fee to our meetings is £2 and includes refreshments. Details of our next meetings are as follows:

Tuesday 10<sup>th</sup> February

**Members Evening**

with Martin Young and Andrew Weston

Tuesday 10<sup>th</sup> March

**Why woodlands matter**

John Minns

Our meetings take place at St Cedd's Hall, Old Road, Frinton-on-Sea at 7.30pm

For more details, or if you would like to become a member, please telephone John Barter on **852993** or Margaret Wilsher on **674134**

## Friends and Neighbours of Great Holland

Our next meetings will be on **Thursday 5<sup>th</sup> February** and **Thursday 5<sup>th</sup> March** at 2 Great Holland Court (opposite the Village Hall), at 2.00pm. Everyone is welcome for tea, cake, friendly chat and to plan activities for future meetings. Please bring your knitting or sewing if you wish.

Phyllis Margetts (**851118**)





## Tendring First Ladies

We welcome everyone to this friendly group that usually meets on the first Monday of each month, although this can vary due to Bank Holidays, at the Methodist Church Hall, Frinton (corner of Ashlyn's Road/Fourth Avenue). Meetings start at 2.30pm. £2.00 is charged at each meeting to cover the cost of the room hire. We have a speaker who talks for about half an hour and then tea and home made cakes are served. There is also a raffle.

**Monday 2<sup>nd</sup> February  
AGM**

**Monday 2<sup>nd</sup> March  
Village Folk**

Local musicians playing traditional music from the British Isles

For more details please contact Fiona Robertson:  
01255 679006 or e-mail [fiona348@btinternet.com](mailto:fiona348@btinternet.com)



## TENDRING CATS PROTECTION

are holding a



### Charity Table Top Sale

Saturday 7<sup>th</sup> March

10.00am to 1.00pm

**McGrigor Hall**

Fourth Avenue, Frinton-on-Sea

Refreshments available

Free admission but donations of cat food welcome





## NEWS FROM THORPE AND KIRBY SURGERIES (FEBRUARY 2015)

Time marches on so quickly and Christmas seems to be a long almost forgotten event-hurrah I hear some say! Even the excitement of opening the branch surgery at Kirby seems so long ago it has become part of our everyday normal routine to travel between the two sites. The decorations are down but we cannot yet look forward to warm sunny weather or even lighter evenings.

The new staff are settling in well and the patient records for those that have already registered are coming through. When you order repeat prescriptions for the first time ensure that the telephone operator knows your preferred method of collection or nominated pharmacy, we have copied over as many as possible from the repeat slips that you provided.

The feedback from patients living in the Kirby area has been very positive and so many residents have already registered. We have plenty of space for other residents to register, when we made the initial plans we did calculate that we would take a lot of patients between Halstead Road, Kirby Cross and Elm Tree Avenue, Frinton. This is to help spread the number of patients living in this area more evenly between the local surgeries, so if it's something you have been thinking of doing we are still accepting registrations.

There is a new government initiative called the 'NHS Friends and Family Test.' This is a scheme to find out how likely patients are to recommend the services of NHS providers to friends and family. Each time a patient visits the surgery they will be asked to complete a form marking how likely they would be to recommend the practice to friends or family. It is early days yet but so far the feedback has been very positive and we thank you for that. Each month the results are fed onto a database to be analysed, if you would like to know more about this project please visit [www.england.nhs.uk](http://www.england.nhs.uk)

There is a way of getting involved with helping to guide the way local services are provided via our Patient Participation Group. This is a group made up of patients who have an interest in local healthcare provision; anyone that is registered with us may attend the meetings and have their say. It is a friendly and informal group and it would be lovely to see a better representation of Kirby Residents. The next meeting is scheduled for Wednesday 4<sup>th</sup> March, 7pm at Thorpe Sports and Social Club, Station Road, Thorpe-Le-Soken. You can contact the secretary at [ppg.thorpesurgery@nhs.net](mailto:ppg.thorpesurgery@nhs.net) There is also a Facebook page, [www.facebook.com/tendringppg](http://www.facebook.com/tendringppg) and also a twitter feed at [www.twitter.com/tebdringppg](http://www.twitter.com/tebdringppg). If you do not have access to any of these media the secretary will be very happy to post items to you, bring a self-addressed stamped envelope to the surgery and I will pass to Lorna Dodman (secretary ppg)

I hope that many of you are trying to improve your lifestyle in 2015 and if you need help with diabetes control, asthma or any of the other chronic diseases the nurses are always happy to help. Why not make an appointment with one of them to find out if there are improvements to be made to your routine? In the meantime best wishes from all of us at the surgery.

Karen Austen



## FOR SALE

**BEAUTIFUL HARDWOOD WOODEN ROCKING CHAIR (possibly mahogany)  
Hardly used - excellent condition**



**£30**

**TEL: 01255 852195**

**We have two new advertisers ...**

**Barry Moule Carpets  
&  
Fantari Dance and Fitness**

**WE COULD NOT PROVIDE VILLAGE VOICE FREE OF CHARGE TO ALL GREAT HOLLAND RESIDENTS WITHOUT THE CONTINUED SUPPORT OF OUR LOYAL ADVERTISERS. IF YOU CONTACT ANY OF OUR ADVERTISERS, PLEASE MENTION VILLAGE VOICE!**



## FROM THE ARCHIVES .....

### Flooding on Gt. Holland Marshes

Since, at this time of year, there is usually a lot of flooding on the Gt. Holland Marshes I thought that it would be interesting to see that it is nothing new but has been so for a very long time.

Looking back in the Archives it can be noted thus:



*Photo of flooding in recent years courtesy of June and Eddie Forest*

In Charles Hicks' diary it was reported "In 1811 a Mr Butcher of Orford in Suffolk undertook and made by contract a new sea wall from Gt. Holland Gap to Frinton Battery. The following year, 1812, in July, there was a very high tide and it ran over the old sea wall from Holland Gap to Sand Point. The water gradually rose and kept running until the tide turned, as if the water had been poured into a basin and poured over. The marshes were soon covered; some sheep on the marsh were marooned until they were rescued.

Again, in 1841 there was flooding when there was torrential rain – tops of posts and backs of gates could be seen just above the water. Hay meadows were destroyed and cattle had to be sold. In 1860 an unusual quantity of rain fell throughout the year. The land was so wet in the summer that it could not be ploughed; the corn crop ruined.

Similar events in 1861."

Just over a hundred years ago, in November 1909, the local paper reported, "Owing to the recent heavy rains the Holland marshes have been flooded to a considerable extent. For several miles the fields and meadows have been covered with water to the depth of several feet. The farmers are unable to get the water off their fields and they are put to it to get the ditches and pipes clear.



Just below Lt. Holland Hall the water lays right across the road. A great deal of the water could be got rid of if the sluice gates were opened. The marshes drain the countryside for nearly 10 miles; the water rushes across the marshes and under the bridge like a millstream. It is calculated that during this flood the water has been rushing under this bridge on the Holland Road at the rate of 20 tons a minute, or 2400 tons an hour, and despite this it shows no appreciable diminution. It is some years since the marshes were flooded to such an extent. The water lying on the land will make the fields practically impossible for grazing purposes for a long while.

The marshes would make a splendid skating place if it would only freeze, but it is too early to expect any signs of ice skating yet."

The local paper recorded in November 1916, "The marshes on the road to Clacton-on-sea have been largely flooded owing to the recent heavy rains but though there are long wide stretches of water on each side of it, the road itself has not yet been encroached upon."

It was noted that in London's 'Times' of February 1937, an article appeared from Mr John B Peachey of Gt. Holland Nursery. He suggested that planting large rooting trees, such as oak, beech, etc., would help to drain away water and protect from dangerous flooding

On 28 January 1939, the local paper reported, "Wednesday's rain is lying in the fields in great sky-coloured patches. For miles the ditches cast reflections of shadows..... At the side of the Holland-on-sea to Lt. Clacton Road the Holland Brook has swollen to such an extent that in places its shores are over a quarter of a mile apart. The great expanse of water is like some estuary widening towards the sea, except for the hedges which struggle miserably through its depth. The hump-backed bridge on the road which leads to Frinton and Walton is the only high and dry part of the crossing of the Brook, and emerges from the water like an island. The flood here extends for over 100 yards and is deep enough to cover the number plates of a motor car.

The excavations on the scene of the doubling of the railway line nearby are also waterlogged, and the dug-out strip which will soon bear main-line traffic to the coast now presents the appearance of an irrigation trench. Strong wooden and metal fences lead at precarious angles. The only way of crossing the fields here is by boat. On Thursday, part of the road from Kirby Cross to Holland-on-sea was under three feet of water. During the morning buses and large lorries were able to get through, but cars and vans had to make a detour via Thorpe. Later in the day the water rose and the buses had to take the longer route. The fields on either side were flooded for many miles."

**Liz Bruce**  
**Local History Recorder**  
**January 2015**