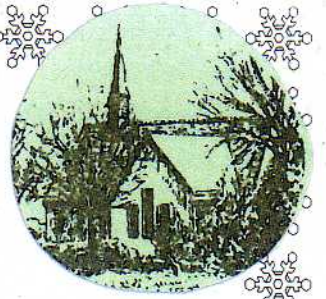


Also available in colour at [www.greatholland.com](http://www.greatholland.com)



# Great Holland Village Voice

December 2014  
&  
January 2015



Winter Wonderland

70p where sold



... to the December 2014/January 2015 edition of Village Voice.

**MERRY CHRISTMAS**

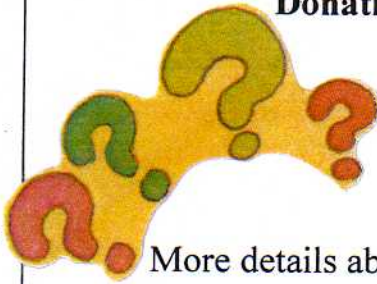
**Two fundraising events are taking place at our Village Hall on Saturday 6<sup>th</sup> December:**



**CHRISTMAS HOME MADE HOUR WITH LIVE MUSIC**

10.00-11.00am.

Donations of home cakes will be very welcome



**FUNDRAISING QUIZ**

7.00 pm



More details about these events appear elsewhere in this magazine  
Please come along if you can!

Thank you to everyone who has contributed to this edition of Village Voice. We always welcome new contributors. Is there anything that **YOU** would like us to include in the next edition? For example:

- Are there any events happening in February or March 2015 that you wish to publicise?
- Do you have any local news items to be included?
- Do you want to tell other villagers about a local group/club?
- Can you write an article for the magazine?
- Do you want to advertise any items for sale/your business/service?

Please contact Linda on **852195** or Sandra on **672453** with details, two weeks before the printing date if possible. **Please note that Sandra deals with the advertising side of the magazine.** The next edition of Village Voice will be printed on:

**Monday 26<sup>th</sup> January 2015**



## Contents

Village Contacts and Local Information

Dates for your Diary

All Saints' Church

Methodist Church

Village news & articles

Advertisements





# Village Contacts and Local Information

<b>Member of Parliament</b>	Mr Douglas Carswell MP	<b>423112</b>
<b>Residents' Association</b>	Paul Fletcher-Tomenius (Chair)	<b>675268</b>
<b>All Saints' Church Minister</b>	Rev. Mark Holdaway	<b>675997</b>
<b>Methodist Church Minister</b>	Rev. Eva Walker	<b>851179</b>
<b>Village Hall Committee</b>	Ms Sue Jenkins (Chair) Mrs F Harris (Bookings)	<b>850317</b> <b>830136</b>
<b>Frinton &amp; Walton Town Council</b> (Incorporating Frinton, Walton, Kirby and Great Holland)	Mrs Myrna Liles (Town Clerk)  Cllr. Mr Christopher Keston	<b>676666</b>  <b>850067</b>
<b>Tendring District Council</b>	Town Hall, Station Road, Clacton CO15 1SE  Cllr. Mr Robert J Bucke Cllr. Mr Mark A Cossens	<b>686868</b> (Emergency/ Out of Hours: <b>2220220</b> )  <b>677495</b> <b>861374</b>
<b>Dog Warden</b>	(Tendring District Council)	<b>0845 2417253</b>
<b>RSPCA</b>	<b>0300 1234 999</b>	
<b>Essex County Council</b>	Cllr. Mr Michael (Mick) Page	<b>672410</b>
<b>Neighbourhood Watch Administrator</b>	Please call <b>101</b> and ask to speak to Paul Teague.	
<b>Crime Reduction Officer</b>	Please call <b>101</b> and ask to speak to David Gillies.	
<b>Crimestoppers</b>	<b>0800 555111</b>	
<b>Essex Police non emergency</b>	<b>101</b>	
<b>Essex Fire &amp; Rescue non emergency</b>	<b>01376 576000</b>	
<b>Citizens Advice Bureau</b>	<b>0844 4770808</b>	
<b>Coastguard Service</b>	<b>01255 675518</b>	
<b>Colchester General</b>	<b>01206 747474</b>	
<b>National Rail Enquiries</b>	<b>08457 484950</b>	
<b>Tendring Dial-a-Ride</b>	<b>01255 436962</b>	
<b>Mobile Library</b>	Calls fortnightly every other Thursday at <b>Rosery Mews</b> only. Arrives 10.00am, departs 10.30am - see Diary page for dates.	
<b>Civic Amenity Tip</b> Maltings Lane, Kirby-le-Soken	<b><u>The Civic Amenity Tip is closed Tuesdays and Wednesdays</u></b>  Opening times: <b>Winter</b> (16 <sup>th</sup> October - end of February): 9.00am- 4.00pm  <b>Summer</b> (1 <sup>st</sup> March-15 <sup>th</sup> October): 9.00am-5.00pm Late night opening during summer no longer takes place.	



# Dates for your Diary ...



# DECEMBER



Monday 1 <sup>st</sup>	<b>Tendring First Ladies meeting:</b> Frinton Methodist Church Hall, 2.30pm. <b>Christmas Social Afternoon.</b> Please come and join us!
Thursday 4 <sup>th</sup>	<b>Mobile Library visits Rosery Mews.</b> <b>Coffee Morning:</b> Methodist Church, 10.30am-12.00 midday.
Saturday 6 <sup>th</sup>	<b>CHRISTMAS HOME MADE HOUR WITH LIVE MUSIC</b> Village Hall, 10.00-11.00am.  <b>FUNDRAISING QUIZ</b> Village Hall, 7.00pm.
Saturday 6 <sup>th</sup> & Sunday 7 <sup>th</sup>	More details about these events elsewhere in magazine. <b>'On a Starry Night' - Great Holland Methodist Church</b> Please come and enjoy our beautifully decorated church 10.00am - 4.00pm Saturday, 1.00 - 4.00pm Sunday. Refreshments will be served.
Thursday 11 <sup>th</sup>	<b>Coffee Morning:</b> Methodist Church, 10.30am-12.00 midday.
Friday 12 <sup>th</sup>	<b>Frinton Late Night Shopping Event:</b> 5.00-9.00pm
Saturday 13 <sup>th</sup> & Sunday 14 <sup>th</sup>	<b>'On a Starry Night' - Great Holland Methodist Church</b> Please come and enjoy our beautifully decorated church 10.00am - 4.00pm Saturday, 1.00 - 4.00pm Sunday. Refreshments will be served.
Thursday 18 <sup>th</sup>	<b>Mobile Library visits Rosery Mews.</b> <b>Coffee Morning:</b> Methodist Church, 10.30am-12.00 midday. <b>'All Things Christmas':</b> Methodist Church, 7.00pm. More details elsewhere in magazine
Friday 19 <sup>th</sup>	<b>Carols around the tree:</b> Outside our former Village Stores, 6.00pm. Please join us!
Sunday 28 <sup>th</sup>	<b>Charity Quiz Night at The Ship:</b> Starts 8.00pm
Monday 29 <sup>th</sup>	<b>Great Holland Folk Club:</b> Church Parish Room (next to All Saints' Church), 7.30pm. More details about this new monthly club elsewhere in magazine.



# JANUARY



Thursday 8 <sup>th</sup>	<b>Coffee Morning:</b> Methodist Church, 10.30am-12.00 midday.
Thursday 15 <sup>th</sup>	<b>Mobile Library visits Rosery Mews.</b> <b>Coffee Morning:</b> Methodist Church, 10.30am-12.00 midday.
Saturday 17 <sup>th</sup>	★ <b>MEETING OF GREAT HOLLAND RESIDENTS ASSOCIATION</b> ★ Village Hall, 10.30am.
Thursday 22 <sup>nd</sup>	<b>Coffee Morning:</b> Methodist Church, 10.30am-12.00 midday
Sunday 25 <sup>th</sup>	<b>Charity Quiz Night at The Ship:</b> Starts 8.00pm
Monday 26 <sup>th</sup>	<b>Great Holland Folk Club:</b> Church Parish Room, 7.30pm.
Thursday 29 <sup>th</sup>	<b>Mobile Library visits Rosery Mews.</b> <b>Coffee Morning:</b> Methodist Church, 10.30am-12.00 midday.



Please ring Jacqui on 674809 for details of events at The Ship during December and January

To include events for **February or March 2015** in the Diary section of the next edition of **Village Voice**, please contact Linda on 852195 or Sandra on 672453 by **15<sup>th</sup> January** if possible.

# All Saints' Church



## Rector's article ...

It's time for the Top Christmas Gifts Lists. The Top Toys for Christmas, the Best Gifts to give a loved one or, of course, the Worst Presents to give ever.

All of them there to give you handy advice for the distant relative you don't see at any other time in the year, or to help you keep up with the latest toy trends. What are the top toys this Christmas? What should I definitely not buy someone at work?

The problem with presents is that they say something about the one who gives and the one who receives.

Maybe you have received the present that says the giver has put a huge amount of thought into it, and with the time, effort, money and thought that has gone into it obviously cares about you very much.

Or maybe you've received the gift that came from the petrol station, or the first page they came to on Amazon, or you know was on offer that week, or is the present that actually they would like themselves.

Or maybe, even worse, you've received the present that seems to say something about you. A friend of mine received a clothing makeover from her sister and I received a How to Cook for Dummies book.

The same is true with the very first Christmas and with the very first Christmas gift. I don't mean the gifts from either the Wise Men or the shepherds, but God himself as he gave his son, the Lord Jesus Christ.

It's a gift that tells us about God, the giver. As the famous verse says, "*For God so loved the world that he gave his one and only Son, that whoever believes in him shall not perish but have eternal life.*"

And it's a gift that tells us about ourselves; the gift is just what we need. To a world, and to people in need of God and of His forgiveness, Jesus came to be our Lord and Saviour.

Come, hear more, and think again this Christmas.

## Christmas Services with All Saints' Church, Great Holland

Saturday 13th December	<b>Community Carol Service</b> , 6pm. Baker Hall, Crossfield Way, Kirby Cross.
Friday 19 <sup>th</sup> December	<b>Carol Singing around the Tree</b> , 6pm. Outside the Post Office (with Great Holland Methodist Church).
Saturday 20 <sup>th</sup> December	<b>All Saints' Christingle Service</b> , 4pm. Christmas fun for all the family.
Christmas Eve	<b>All Saints' Carols by Candlelight</b> , 6.30pm. Readings and Carols, Mulled Wine and Mince Pies (with Tendring Male Voice Choir).

Mark



## From All Saints' Diary - DECEMBER:

Wednesday	3 <sup>rd</sup>	11.00am	All Saints' Bible Group in the Parish Room
		2.00pm	Friendship & Interest Group at St Michael's Church Hall
Saturday	6 <sup>th</sup>	10.00am	HOME MADE HOUR Christmas Special!!
<b>Sunday</b>	<b>7<sup>th</sup></b>	<b>11.00am</b>	<b>Morning Service</b>
Thursday	11 <sup>th</sup>	1.00pm	Christmas Parish Lunch at St Michael's Church Hall
<b>Sunday</b>	<b>14<sup>th</sup></b>	<b>8.00am</b>	<b>Joint Holy Communion with our friends from St Michael's</b>
		<b>11.00am</b>	<b>Morning Service</b>
Tuesday	16 <sup>th</sup>	7.00pm	Special Needs Service at St Michael's
Wednesday	17 <sup>th</sup>	2.00pm	Friendship & Interest Group at St Michael's Church Hall
Friday	19 <sup>th</sup>	6.00pm	Carols around the tree
Saturday	20 <sup>th</sup>	4.00pm	Christingle Service
<b>Sunday</b>	<b>21<sup>st</sup></b>	<b>11.00am</b>	<b>Holy Communion</b>
Wednesday	24 <sup>th</sup>	6.30pm	Carols by Candlelight
		11.30pm	Midnight Service at St Michael's
Thursday	25 <sup>th</sup>	8.00am	Holy Communion
		9.30pm	Christmas Day Holy Communion service at St Michael's
<b>Sunday</b>	<b>28<sup>th</sup></b>	<b>11.00am</b>	<b>Joint Morning Service with our friends from St Michael's</b>

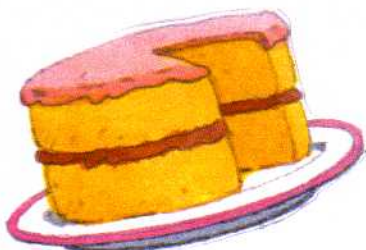


HAPPY NEW YEAR TO YOU ALL!

## From All Saints' Diary - JANUARY 2015:

<b>Sunday</b>	<b>4<sup>th</sup></b>	<b>11.00am</b>	<b>Morning Service</b>
Wednesday	7 <sup>th</sup>	2.00pm	Friendship and Interest Group in St Michael's Church Hall
<b>Sunday</b>	<b>11<sup>th</sup></b>	<b>8.00am</b>	<b>Joint Holy Communion with our friends from St Michael's</b>
		<b>11.00am</b>	<b>Morning Service</b>
Thursday	15 <sup>th</sup>	1.00pm	Parish Lunch at St Michael's Church Hall
<b>Sunday</b>	<b>18<sup>th</sup></b>	<b>11.00am</b>	<b>Holy Communion</b>
Wednesday	21 <sup>st</sup>	2.00pm	Friendship and Interest Group in St Michael's Church Hall
<b>Sunday</b>	<b>25<sup>th</sup></b>	<b>11.00am</b>	<b>Morning Service</b>
Tuesday	27 <sup>th</sup>	2.15pm	"Teapot" at the Baker Hall. A time to meet friends and enjoy Tea and home made cakes.

New Year dates for All Saints Bible Group to be announced.



## **Home Made Hours**

Our friendly Home Made Hours help to raise funds for All Saints' Church. **THANK YOU** to everyone who supports these events, particularly those who regularly donate home made/home grown produce for us to sell.

Are YOU able to provide any items for our Home Made Hours, please? We would be particularly grateful for donations of home made cakes, which are always popular. We also welcome home made preserves and any surplus fruit, vegetables or plants from the garden. **If you want to find out more about our Home Made Hours, please contact Nickie Stack on 677984.**



### **ALL SAINTS' PARISH CHURCH WHO'S WHO**

**RECTOR:** Rev. Mark Holdaway, The Rectory, 10 Thorpe Road, Kirby Cross CO13 0LT, (675997)

**CHURCHWARDENS:** John Beale, 5 Malting Lane, Kirby le Soken CO13 0EH (676472) and Judith Little, Lambourn House, Little Clacton Road, Great Holland, CO13 0EY (813645)

**PAROCHIAL CHURCH COUNCIL:** Churchwardens (ex officio), Sheila Watts (ex officio), Don Osler, Vanessa Giles and Ilze Robertson

**HON. SECRETARY TO THE PCC:** Judith Little

**VICE CHAIR TO THE PCC:** John Beale

**HON. TREASURER TO THE PCC:** Sheila Watts c/o The Rectory, 10 Thorpe Road, Kirby Cross CO13 0LT, (675997)

**SIDESPERSIONS:** Rose Batten, Don Osler and Sheila Watts

**MAGAZINE PRODUCTION TEAM:** Sandra Mooney and Linda O'Reilly (Joint Editors), Mim Wilson, Irene Lightowler, Michele Frere, Ingrid Harding, Judith Little, Eric Elsworth, Audrey Warren, June Forrest, Charmian Goundry, Iain Bell, Eileen Derrick, Pauline Knight, Christine Oxford and Chris Crispin (Distributors)

### **Church Hall - All Saints' Great Holland**

The Church Hall is situated next to All Saints' and is available for bookings from the general public. The accommodation comprises a pleasant carpeted room with six easy chairs, plus seating for about a dozen people, a small kitchen with tea/coffee making facilities and microwave, entrance hall and two toilets (one disabled). The cost of hire is £5 per hour from May - September and £7 per hour October - April (to cover extra heating and lighting costs). To hire the Hall please contact **Judith Little** on **813645**.



**MERRY CHRISTMAS**

**HOME MADE HOUR**

**6<sup>th</sup> DECEMBER 2014**

**HOME MADE CAKES, TRIFFLES,  
MARMALADE, GIFTS, CARDS,  
CHRISTMAS DECORATIONS;**

**LIVE MUSIC**

**TEA, COFFEE and TIME TO  
SPEND WITH FRIENDS AND  
NEIGHBOURS.**

**RAFFLE**

**Great Holland Village Hall**

**10.00-11.00am**

Other items for sale will include greetings cards and calendars featuring paintings by local artist Maggie Murphy.



# Tribute to Pam Schaub

*The following tribute to Mrs Pam Schaub, who died on 20<sup>th</sup> September, includes some details of her life in London, which were shared in other tributes at her funeral service at St Saviour's Church Camberwell.*



Pam was born in Blackheath, Lewisham and while still a child, moved with her parents and two sisters to Finchley. She was very bright at school and went on to take a degree on Geography at Bedford College London, which at the time was located in Cambridge due to the hazards of World War II.

Pam started her career in the Civil Service, but it was not long before she realised she would be happier teaching and there followed a highly satisfying and equally successful career in the classroom. Over the years she taught at primary and secondary schools, becoming head of Special Needs in one of the first comprehensive schools, and ending her career as Deputy Head of a large, girls comprehensive school. Some of these schools were to be found in the most socially deprived areas of the capital. She was particularly interested in reading schemes and was the co-author of one that was adopted nationally and internationally.

Interspersed with this career Pam married and was mother to three daughters, and it was to provide them with a holiday home that she purchased 'Ring Cottage', Little Clacton Road, in about 1960. As a child, she herself had spent a number of school holidays in Walton and doubtless it was those memories that prompted her to choose Great Holland for a summer base. She joined the congregation at All Saints' and attended as her visits to the village allowed.

As the years passed, Pam found more and more happiness in the life of the village, even though she had to cope with the sudden and totally unexpected death of her daughter, Melanie, a loss which remained with her for the rest of her life.

Pam became increasingly involved in the life of All Saints', to the point that she was elected to the Parochial Church Council in 1991 and remained one of its members for the next 18 years. Additionally, she held the post of Electoral Roll Officer, Sidesman and PCC minute Secretary for various periods and in 2002, she took up Church Warden responsibilities for the next seven years.

But it was not only with the Church's administration that Pam concerned herself. She took charge of the organisation of the Home Made Hour for more than ten years, raising funds averaging more than £1,000 each year for the Church. She organised the Annual Fete from 2003-2006, making profits of more than £4,000 each year. She also helped collate the Village Magazine and led intercessions at morning service - in short, she became a pillar of All Saints'.

About five years ago, Pam became progressively more frail and understandably, returned to live in London near her family. Thereafter, she attended St Saviour's Church, Camberwell, where her family, colleagues and friends gathered for her funeral service to remember her with a joy to share. Her upright gait and no-nonsense attitude were indicative of a person, who everyone knew, made it clear who they were dealing with. But she enjoyed a joke and was rather partial to a glass of wine. An active lady - swimming and gardening until well into her eighties - hands on, self deprecating, and in whose company it was a pleasure to be..

In my eulogy at the funeral, I of course passed on to the family the condolences of all those in Great Holland who knew Pam, expressing the hope that the family would take comfort in the knowledge that her life had been one of happy service not only to the family, but also to the children she taught, to the community in which she lived and to her creator, in whom she had the deepest faith.

**Ken Green**



## ***Home Made Hours - now with Live Music too!***

Thank you to everyone who supported our November Home Made Hour and for the donations of home made goods and produce.

As usual, there will be no Home Made Hours in either January or February.

### **FROM THE REGISTERS:**

#### **BAPTISM/THANKSGIVING SERVICES**

**We welcome into the family of the church:**

Millicent Ann Mew and Grace Clare Mew

#### **BURIAL OF ASHES**

Alfred Joseph Richards and Eileen Mary Richards

Emrys (Ted) Gething and Joyce (Jo) Gething

# DENIS celebrates 100 years

*Many villagers will know Denis Brown, who sung with the church choir in Great Holland for many years. Denis recently celebrated his 100<sup>th</sup> birthday. His daughter Fiona Robertson tells us about her father's life.*



Denis Brown was born in Barnet, Hertfordshire on 16<sup>th</sup> November 1914. He was offered an apprenticeship at the age of 15 at the Barnet Press and was there until 1940.

Denis has always enjoyed cricket and started playing for Bentley Heath Cricket Club in 1931.

In 1939 at the outbreak of WWII Denis volunteered for the Royal Navy but was turned down and was told to wait until he was called up. In July 1940 he joined the Holding Battalion of the Royal Ulster Rifles in Ballymena, N.I. He then moved to the 8<sup>th</sup> Battalion RUR. He was in Valetta, Malta in July 1943 following Operation Torch, the Invasion of North Africa, then the Invasion of Sicily and the Invasion of Italy. He was demobbed from Greece in 1945.

He met his wife to be in 1946 and married Cara in June 1947. They lived in Barnet, then Thurleigh and Ravensden in Bedfordshire, before moving to Holland on Sea in 1968 and Great Clacton in 1983. Denis set up his own printing firm in Clacton - Viking Press and was there until retirement in 1989.

He has been a member of Clacton Camera Club, Clacton and District Fuchsia Club, the 8<sup>th</sup> Army, Colchester. He was Chairman of the Great Clacton Royal British Legion from 1989 to 1993, and was awarded the RBL Long Service Certificate in 1996. He has always been a keen Arsenal supporter.

Cara died in 1994 and Denis continued to live in Great Clacton until April 2013, when he moved into Read House Residential Care Home

Denis celebrated his birthday with a surprise birthday dinner at the Columbine Centre, Walton attended by family and friends. The Mayor of Frinton and Walton presented him with his card from the Queen. And he had a tea party at Read House on Monday with residents and staff.

If asked what is his secret to a long and happy life, he would say being well looked after by his family.



# Great Holland Methodist Church

Invite you to

## On a Starry Night

Please come and enjoy our beautifully  
decorated church on

Saturday 6th December 10am – 4pm

Sunday 7th December 1pm – 4pm

Saturday 13th December 10am- 4pm

Sunday 14th December 1pm – 4pm

Refreshments served all day.

# Great Holland Methodist Church



The people who walked in darkness  
have seen a great light.  
For those who lived in a land of deep shadows -  
light! Sunbursts of light!  
For to us a child is born,  
to us a Son is given,  
and the government will be on his shoulders.  
And he will be called  
Wonderful Counsellor, Mighty God,  
Everlasting Father, Prince of Peace

## Isaiah 9: 2, 6

My friends, Christmas is coming....some of you can't cope with the thought of people already talking about it, some of you are so excited that you can't wait.

The Christmas adverts have also already started, sharing with us messages of love and of sharing with each other....(Let's make no mistake, the adverts are there to make us buy, they are clever marketing, but as you read this article, I invite you to forget about that for a moment).

I say forget the marketing bodies, because I know that the advert I am going to talk about has caused some controversy.

I wonder if you have seen Sainsbury's advert? It portrays the Christmas truce of 1914, where British and German troops ventured into No Man's land to share greetings with each other and to play a game of football, to recognise their shared humanity. That was a truce of singing the same message of love and hope, the message of Christmas, in different languages and from the opposite sides of the front. Forget Sainsbury's, think about the story itself.

My friends, the First World War was horrible, there is no two ways about it! It was one of history's most brutal and relentless conflicts. It was pointless, it was costly. Yet, in the midst of that horror, the soldiers wanted to find a glimpse of hope, a glimpse of light.

No different to over 2000 years ago, when God came to us as a babe in Jesus. In the midst of darkness, of pain, as people were looking for a glimpse of hope, and a glimpse of light, they found the light of the world itself in the arms of Mary. As John 1 says '...Out of his fullness we have all received grace in the place of grace already given.'

No different to today. Out of his fullness, grace unmeasurable, for you and for me.

So, in the sparkle of the fairy lights, in the busyness of Christmas shopping, in the quiet of the night, in the sound of laughter, amidst the noise and playing, in the memories of loved ones, in the tears of loneliness, please, please, remember to search for the babe in Mary's arms, remember to search for the Jesus that knows exactly who you, and where you are; remember to search for Jesus because in looking and finding him, you will find much more than you expected, much more than you imagined Christmas would bring you, you will find LIFE itself....in all its fullness, in all its hopefulness, filled with the love of the one that created you and loves you as you are!

So, as you prepare for the coming of Christ, listen again to the words sang jointly by those soldiers that were looking for glimpses of hope, light and love.

Silent night, holy night,  
Son of God, love's pure light;  
radiant beams from thy holy face  
with the dawn of redeeming grace,  
Jesus, Lord, at thy birth,  
Jesus, Lord, at thy birth.

Merry Christmas and be blessed by the One that loves you without limit.

Rev. Eva Walker



## Great Holland Methodist Church

**Saturday 29<sup>th</sup> November**  
**10.00am - 2.00pm**

### Christmas Fair

There will be a variety of stalls.  
Ploughman's lunches and mince pies will be on sale.  
**FREE ENTRY**



**Thursday 18<sup>th</sup> December**  
**7.00pm**



**'All things Christmas'**  
Featuring 'St Phil's Connexion and 'St Philomena's Singers'

Please come and join us to sing Christmas Carols and songs

## Thursday Coffee Mornings

We hold coffee mornings in Great Holland Methodist Church Hall, every Thursday morning from **10.30am - 12.00 midday**. Please drop in for coffee, biscuits, toasted teacakes and the chance to make new friends. We also have donated goods for sale. We'd love to see YOU there!





# GREAT HOLLAND RESIDENTS ASSOCIATION

---

**Chairman:** Paul Fletcher-Tomenius **Vice-Chairman:** Robert Caines  
**Treasurer:** Denys & Lindy Strich **Secretary:** Louise Goodwin & Hazel Martin:  
**Planning Officers:** John Poulton, Tom Sandy & Eddie Forrest

Dear Residents,

Even as I write this, contractors for Essex County Council are actually doing repairs to Manor and Rectory Roads, as well as doing something about Little Clacton Road! I have been there several times and telephoned several sympathetic friends, who have all assured me my eyes are not deceiving me! We are assured that all of the potholes drawn to their attention will be dealt with and that the narrow, dangerous section of road will have double white lines, making overtaking unlawful. This is some small progress and thanks are owing to all of you who have kept protesting and reporting, as well as Councillor Bucke for his sustained pressure and, more latterly, Councillor Page, whose intervention has assisted in actually scheduling the works. However, let us not forget that not much praise is owing to Essex County Council, who have persistently evaded their legal responsibilities to keep our roads usable and safe. I now have a line of communication to ECC, so let us know of any really bad maintenance issues and we shall see if the greater cooperation can be maintained.

There is good news on the planning front with the refusal of an application to build five detached houses at Larges Farm. However, the challenges just keep on coming, as one land owner after another seems intent on making money from inappropriate building in Great Holland. You may have noticed two separate so-called building plots for sale, fronting the main road. Well, neither of these has planning permission and, at the time of writing this, neither is even the subject of a current application. It's not illegal, of course, to advertise building land for sale without permission, as that is frequently dealt with later. These two plots, just like Larges Farm, raise the same vital issues. They fall outside the settlement boundary and they represent an attempt to fill in all the gaps along the main road, so called ribbon development. Tendring District Council itself accepts that the present infrastructure of Great Holland makes increases in overall housing stock unsustainable and GHRA strongly agrees with this as a guiding principle. Ribbon development ends up linking us with Kirby Cross, which itself is linked by continuous development down to the Naze! No thanks! Keep our green gaps green, please.

Then we have the owner of Great Holland Nursery in Church Lane floating a plan to build three detached houses on the site (no formal planning application has been made to date, but he states that the Council has been approached for its views). This land falls outside the settlement boundary AND falls within the Conservation Area! The person concerned is utilising the time-honoured tactic of 'threatening' greater density if we do not accept this plan, even stating EXPRESSLY that the council would "insist" on more houses! This is nonsense, of course, since planning authorities do not do this, only developers!

As I said, there are a lot of avaricious people out there who have not the least interest in preserving the long term character of Great Holland. GHRA does. Please support us.

Kind Regards to you all,

Paul Fletcher-Tomenius  
Chair GHRA



## **Great Holland Residents' Association MEETINGS**

**4<sup>TH</sup> OCTOBER 2014 AT 10.30AM  
In the Village Hall**

### **MINUTES**

#### **Committee Members Present:**

**Vice-Chairman Robert Caines**

**Denys Strich**

**Lindy Strich**

**Hazel Martin**

**John Poulten**

**Tom Sandy**

**Sandra Mooney**

**Sheila Watts**

**Linda O'Reilly**

#### **1. APOLOGIES FOR ABSENCE**

Apologies were received from Chairman Paul Fletcher-Tomenius and Birgitta Fletcher-Tomenius, Alan and Jeanne Large, Louise and David Goodwin, David Martin, Eddie and June Forrest, Councillor Mick Page and Wendy Drake.

#### **2. MINUTES OF THE GHRA AGM HELD ON 10<sup>TH</sup> MAY 2014**

The Minutes were accepted.

#### **3. MATTERS ARISING FROM THE MINUTES**

There were no matters arising.

#### **4. PCSO REPORT**

PCSO Michelle Diss reported to the meeting: from May to September there had been a vehicle theft in Pork Lane (the vehicle was recovered and three males arrested), six minor road traffic collisions, mostly in wet weather conditions, two abandoned vehicles (in Rectory Road and The Close), two incidents of criminal damage (damage to the Village Hall car park fence and to the Post Box in Westbury Road), a report of loose horses in Pork Lane, the theft of a catalytic converter from a



vehicle in the Main Road, and the theft of flowers from boxes outside Kirby Cross cemetery. There was also a report of two men knocking at doors attempting to sell tools and chainsaws at knock-down prices. These men are believed to be Travelers from a temporary site at Dovercourt. Residents should contact the PCSO if a similar incident occurs.

Michelle Diss also reported that there have been reports of burglaries on the Edenside Estate and an incident where items were removed from a house where entry had been gained by someone purporting to be from the Water Board.

Michelle reminded the meeting that with Christmas approaching, care should be taken to put expensive presents out of sight and not visible to anyone looking into windows, and that cardboard boxes from expensive items (TVs, Xboxes etc) should not be put out for the dustman, where they can be seen by anyone passing by.

A Police Surgery will be held weekly between 10 am and 11 am on a Friday in the Village Hall. Residents are invited to attend if they have any concerns about matters which they might wish to discuss with the police.

The Vice Chairman reported that Police Sergeant Gerard has been seconded to Clacton until Christmas.

#### **5. LOCAL PLAN**

John Poulten reported that he has been unable to attend the Council meetings regarding the Local Plan due to illness and therefore does not know about the progress with the Plan. Councillor Bucke said that there is a Meeting on 21st October at Princes Theatre, at which sites for development will be discussed. The Public is invited to attend.

#### **6. POTHoles IN RECTORY AND MANOR ROADS**

The Residents Association Committee Meeting of 22<sup>nd</sup> September was attended by Councillor Mick Page who made a commitment at that Meeting that if he could be supplied with a plan and photographs of the potholes in Rectory and Manor Roads, they will be repaired by the end of October. Cllr Page was presented with a numbered plan of the holes together with photographs of them within 2 days of the Committee Meeting. Cllr Page later confirmed that these have been handed to Essex County Council.

A representative from the Frinton and Walton Town Council told the meeting that Frinton and Walton has asked for a meeting regarding potholes and this is to take place – a date is awaited. Cllr Page has said that he is our point of contact for any matters relating to the roads. Cllr Page's telephone number is in the Village Voice and he should be contacted by residents who have a concern regarding potholes. The call should be noted as the Council would require evidence that they had been contacted and told of a pothole should it cause damage to a car, otherwise there is no recourse.

#### **7. TREASURER'S REPORT**

At the beginning of the meeting there was £2,596.06 in the Association's bank account, plus £28.51 held in cash – a total of £2,624.57. Costs outstanding total approximately £80. Funds received today will be added to the bank account. The Treasurer was pleased to announce that the accounts for 2013 have been audited and signed off. Copies are available if residents require one.

**8. DATE, TIME AND VENUE OF NEXT MEETING**

17<sup>th</sup> January 2015 at 10.30am in the Village Hall.

**9. ANY OTHER BUSINESS**

- a) John Poulten told the Meeting that the Kirby GP surgery would reopen on 1<sup>st</sup> December as part of the Thorpe-le-Soken Practice. The Surgery had been asked to send a representative to speak to the Residents meeting but they could not spare anyone because 4<sup>th</sup> October is flu jab day. However, they have said they would like to meet Great Holland residents, and it was suggested that they should be asked to send someone to speak after the Home Made Hour in the Village Hall on 1<sup>st</sup> November, which takes place between 10 and 11am. If this could be arranged it is hoped that the Village Voice distributors would be able to circulate a special notice advising residents of this talk. A resident complained that parking was difficult at the Kirby Surgery, but this holds true also of Caradoc Surgery and in fact of most surgeries.

Caradoc Surgery's current problems were mentioned: Dr Meleka is absent from work, having had surgery, her husband has become involved in helping with organization and the Practice Manager has resigned. A replacement manager has been recruited and is due to start work on 1<sup>st</sup> November. At present Caradoc Surgery has no resident Partner and no Practice Manager.

- b) A Resident of The Close complained that there are between 28 and 30 cars parked in the Close every night; a policeman who lives in the corner of The Close parks four cars there, which often block others in and would make it impossible for Ambulances or Fire Engines to gain access to The Close. The Council was approached by the complainant but was told that he should telephone the police. The Council was asked if part of the greensward could be used for parking, which would alleviate the problem to some extent, but they have said this would be impossible. After discussion with Cllr Robert Bucke, Ian Taylor, the Council Estates Officer, was contacted and it is hoped that something will now be done. Mention was made of the 5 Council-owned garages in The Close, four of which are used for storage and only one to garage a car. It was suggested that the complainant should produce a petition signed by residents of The Close to present to the Council to ask them to do something about the problem of parking and access.
- c) A question was asked about the up-to-date position regarding the Village Post Office; GHRA has heard nothing to date of any progress towards reopening.
- d) Little Clacton Road. Problems with the narrowness of the road at the island at the bottom of the road and of hedges encroaching onto the road were mentioned: problems with this road have been raised with Essex County Council again and again with little success, although double white lines are to be painted down the road to prevent overtaking and there is a new 30mph sign. ECC will not introduce road calming measures, which would be the best way of limiting speed along this road. The problems with skips, HGVs and tractors using this road was mentioned, and the Treasurer also mentioned that use of Pork Lane by HGVs is likely to increase as new vehicles are being produced the height of which will make it impossible for them to get under the Railway Bridge on Kirby Road. Cllr Bucke had taken part in a one hour speed watch in Little Clacton Road last week and had found 29 drivers exceeding the speed limit. He commented that Little Clacton Road is the worst in the area for speeding.

- e) A question was asked about whom residents should contact regarding the problem of hedges encroaching onto the road, and Cllr Bucke said that Essex County Council will usually persuade the owners of the land to cut back the hedges. The Treasurer offered to write to Essex County Council regarding any hedge encroachment onto Great Holland Roads if residents will let him know where such encroachment is taking place.
- f) An Addison Road resident asked about the plot in Kirby Road which has very recently been cleared and enclosed with metal fencing: no planning application for development appears to have been submitted, it is not known who owns the land, and it was pointed out that landowners are entitled to clear land that they own. There was some concern about wildlife habitat being destroyed as a Muntjac deer had been seen at the site, but it was pointed out that the laws protecting wildlife relate on the whole to protecting nesting birds, which would not apply in this case, so there was little GHRA could do about the clearing of the site. However, any application to build on the site will be carefully monitored by GHRA as any development outside the present village boundary will be opposed.
- g) A resident asked if the lamp post at the end of Rectory Road will be replaced, as lack of light makes it difficult to see the turning from the Main Road at night. Cllr Bucke said that it was his understanding that the lamp post will be replaced but nothing has been heard from Essex County Council to date. The dog litter bin which was outside the Post Office has been removed and a resident asked whether that, too, will be reinstated, but nothing had been heard regarding this. Cllr Bucke will take up these matters with the Council.
- h) Cllr Bucke mentioned that in Kirby Road, Kirby Cross, by the bus shelter, there is a plot of land where some trees have been cleared. No one knows who owns the land, and a tree preservation order has been put on other trees there, but he pointed out the need for vigilance in situations where there is no known owner of plots of land.
- i) A question was asked about what is happening at the Lion's Den: permission has been granted for the Lion's Den to be altered into a private house, with two bungalows to be built on what was the car park. Little seems to have been done at the site at present, but the owners have three years from the date of permission being granted to complete the work.
- j) A question was asked about what is happening at Frinton Manor and Cllr Bucke pointed out that building work is at least one year behind schedule and no one can live there until the pavement work is completed outside the property.
- k) Cllr Bucke told the meeting about the need for an Emergency Plan, with each village and town invited to produce its own plan for dealing with emergencies. Cllr Bucke promised to supply the GHRA with guidelines for such a plan, and Frinton and Walton Town Council have copies of the 1986 plan. GHRA have asked for a copy to see what format such a plan should take – in the event of a catastrophe, it would clearly be good to have a well-thought-out plan for dealing with such a situation.
- l) Cllr Bucke mentioned that the Frinton Literary Festival will take place on the 9<sup>th</sup>, 10<sup>th</sup>, 11<sup>th</sup> and 12<sup>th</sup> of October.

m) The caravan site at Hutley's Farm was mentioned, and the Vice-Chairman read out a letter from the farm owners, a copy of which had been sent to the GHRA and residents of Great Holland. The owners pointed out that they had consulted their near neighbours about their plans and no objections had been received. The caravans were for the use of sea defence workers who work shifts, to give them a place to sleep and rest whilst they were off duty and away from home. Contrary to what had appeared in the Frinton and Walton Gazette, power to the caravans was supplied by an armoured cable from the farm buildings and not from the farmhouse itself. The caravans were modern and had toilet and shower facilities. The owners stated that as soon as the sea defence work was completed and the workers had left, the field would be returned to its usual use, for grazing sheep. There was no intention to make the field a permanent caravan site. The Treasurer pointed out the change of use had been done without planning permission, and GHRA had complained about the infringement of planning laws, as it does as a matter of course with all such infringements.

**The Meeting ended at 11.30 am.**

**THERE WAS A FREE RAFFLE FOR ALL GHRA MEMBERS, INCLUDING NEW MEMBERS JOINING ON THE DAY OF THE MEETING, WHICH WAS DRAWN AFTER THE MEETING AND WAS WON BY GHRA MEMBER MRS BARBARA GOODMAN (WHO WAS NOT PRESENT). THE PRIZE WAS A LARGE HAMPER OF CHRISTMAS GOODS AND A VOUCHER FROM THE SHIP FOR A "MEAL FOR FOUR"**



Dear Fellow Resident,

## **Tendring Local Plan Review**

20.11.14

As you know the Local Plan Draft initially prepared by TDC last year was withdrawn by TDC as they were told by Central Government, along with many other Local Planning Authorities, that the provision for new housing, then suggested at 6000, was inadequate and would be rejected. The suggestion now is for 12000 + between now and 2031. The Frinton and Walton Gazette have carried detailed information for the District as a whole for some weeks now and doubtless will continue to do so.

In addition, TDC is publishing Local Plan Newsletters and these can be viewed on its website. The latest is Number Three dated November 2014. The whole of the paperwork is on line. If you go TDC website and "View Our Local Plan" you will find the Newsletters.

Number Three gives the broad current overview. For the detail that concerns us follow the link to the Committee Agenda 21<sup>st</sup> October and go to section A5 called Housing Sites and Trajectories you will see what is said. I have cut and pasted 4 sections which I set out below in italics and following each section I make some comments. The plans referred to in the narrative are essentially those published in the F&W Gazette 16th October pages 6&7 and can be viewed on the TDC website.

I have also added a summary at the end, containing my thoughts

### **INTRODUCTION**

*It is recommended that the new version of the Local Plan makes provision for an increase of at least 12,120 dwellings over the 17-year period 1st April 2014 to 31st March 2031 to meet objectively assessed housing needs and therefore comply with the requirements of government planning policy. This report sets out Officers' recommendations for the specific sites to be identified in the new Local Plan showing where these new homes will be built. Broadly following the overarching 'spatial strategy' considered by the Members at the last meeting of the Local Plan Committee and having considered, in more detail, the potential of different areas of land through a 'Strategic Housing Land Availability Assessment' ('SHLAA'), the sites recommended for inclusion in the new Local Plan are expected to deliver the following housing numbers in different parts of the district:*

- *Clacton-on-Sea – 3,634*
- *Harwich & Dovercourt – 1,358*
- *Colchester Fringe – 3,000*
- *Weeley – 1,100*
- ***Frinton, Walton & Kirby Cross – 952***
- *Manningtree, Lawford & Mistley – 655*
- *Brightlingsea – 231*
- *Rural Service Centres – 362*
- ***Smaller Rural Settlements – 181***
- ***Small 'Windfall' Sites – 725***

### Comments:

1. Great Holland is considered, in effect, under the three headings I have highlighted above
2. See the comments by TDC on the three headings

## **FRINTON, WALTON AND KIRBY CROSS HOUSING SITES**

At the last meeting of the Local Plan Committee, it was agreed that Frinton, Walton and Kirby Cross should be classified as a 'smaller urban settlement' where lower levels of development would be suitable relative to the size, character and function of the settlement. The reports considered at that meeting suggested that Frinton, Walton and Kirby Cross would probably accommodate around 900 new homes. Following further, more detailed assessment of sites and broad areas in and around Frinton, Walton and Kirby Cross through the SHLAA, Officers recommend that the 13 sites in the table below, each with the potential to deliver 10 or more new homes, be included in the new version of the Local Plan to deliver an estimated total of 952 new homes between now and 2031, which is slightly higher than the original estimate (a map showing the location of each site is attached as Appendix A5c to this report).

MAP

REF SITE NAME INDICATIVE

CAPACITY

1 to 6 Not applicable

7 **Frinton Manor, Kirby Road, Kirby Cross/Great Holland \* 20**

8-13 Not applicable

TOTAL 952

**Six of these sites (shown with\*) either already have planning permission for housing development or are already under construction.** These developments are expected to proceed, notwithstanding any objections that might be received in response to public consultation on the Local Plan. Of the remaining 7 sites, the following section provides more detail about the following 4 sites that either do not feature as allocations in the previous draft of the Local Plan or where changes to previous allocations are proposed.

### Comments:

The only site that is in Great Holland is Frinton Manor and the 20 units already recently built there (but not occupied). This is the only site in Great Holland, recognised strategically as capable of generating more than 10 units.

## **HOUSING SITES IN SMALLER RURAL SETTLEMENTS**

At the last meeting of the Local Plan Committee, it was agreed that **growth in the district's less sustainable 'Smaller Rural Settlements' in the new version of the Local Plan should be limited to small-scale 'infill development' within defined Settlement Development Boundaries** as these settlements typically have limited access to sustainable transport choices, jobs, shops, services and facilities and are therefore generally less suitable for additional housing growth. As can be seen in this report, there is sufficient land around the district's towns, on the Colchester Fringe and at Weeley to deliver the 12,120 new homes required in Tendring so **there is no pressure to direct additional housing growth to any of the district's less sustainable settlements.**

Consequently, in the new version of the Local Plan, no new sites are recommended for allocation in the Smaller Rural Settlements over those that are already allocated in the 2012 Draft Local Plan (as amended) or which already have been granted planning permission, where the principle of housing development has already been established and which will achieve certain local benefits. **Any future proposals for housing outside defined Settlement Development Boundaries will generally be resisted and will only be supported if they meet the NPPF definition of sustainable development, are capable of being accommodated by**

*existing infrastructure and will help to deliver local benefits or comply with policies in the Local Plan relating to the delivery of housing in the countryside. Following further, more detailed assessment of sites and broad areas in and around the district's Smaller Rural Settlements through the SHLAA, Officers recommend that the 6 sites in the table below, each with the potential to deliver 10 or more new homes, be included in the new version of the Local Plan to deliver an estimated total of 181 new homes between now and 2031 (a map showing the location of each site is attached as Appendix A5c to this report).*

Comments:

1. None of the 6 sites referred to include any land in Great Holland
2. Note the general wording of this section which I have highlighted.

**WINDFALL' SITES**

*The National Planning Policy Framework allows Councils to make an allowance for unidentified 'windfall sites' (sites not specifically allocated for housing development but that still come forward with planning applications for housing and contribute toward housing numbers) if there is evidence that such sites have consistently become available in the local area and will continue to provide a reliable source of supply. The Council's 2014 SHLAA provides evidence that shows that it would be reasonable to expect around 725 dwellings to be built on small windfall sites both within established built up areas and through small scale infill developments in the district's smaller rural settlements. This windfall allowance therefore forms part of the numbers recommended for inclusion in the Local Plan.*

Comments:

By definition no windfall sites can be identified because that is the nature of their description.

**SUMMARY**

**These are my personal thoughts only. Going by the narrative, if this plan is adopted in this form it will be pretty much what we suggested when responding to TDC's draft plans. There would be no pressure to direct new housing into the village and thus there is no quota to fill.**

**To the extent that development will be permitted it will be infill/windfall, by definition on a limited scale over the plan period to 2031.**

**Until the local plan is adopted we need to continue with our policy of objecting to non conforming development, particularly outside the Settlement Boundary as we perceive it to be.**

**This brings me to the last point, which is crucial. To date the TDC have not prepared their latest draft of the Settlement Boundary plans and in particular for Great Holland. (The last draft was in February 2014 to which we objected). If TDC accept the plans as we lodged them with the Council in response to the February Draft I think we will have achieved our objective.**

**On a general point GHRA Chairman Paul Fletcher-Tomenius and I are trying to set up a meeting at TDC to discuss various issues arising out of the absence of a current Local Plan in the light of the flurry of planning applications over the past months. Hopefully that meeting will take place soon and hopefully we will know more with particular reference to the issue of the Settlement Boundary.**

**John Poulten, Planning Officer  
Great Holland Residents Association**

## **AVOID VISITING A&E UNLESS ABSOLUTELY NECESSARY**

Following the problems highlighted in the press regarding Colchester General Hospital A&E the following might be of interest to our readers:-

People across north east Essex are being asked not to go to the Accident and Emergency department at Colchester General Hospital unless they have a serious or life threatening condition. Several patients who visited the department have presented with minor injuries that could have been treated more appropriately and faster at an alternative NHS service.

### **Alternatives to A+E**

Please consider these ways of getting treatment faster:

**Treat yourself** for simple illness and minor cuts, sprains and burns. Keep simple painkillers and cough remedies in a safe place at home and have a first aid kit handy.

**Ask your local pharmacist** for advice on minor illness. They can provide expert advice and simple treatments.

**Call 111** 24 hours a day. Their specialist nurses can provide clinical assessment and advice.

**North Colchester Healthcare Centre (incorporating the walk-in centre), Colchester Primary Care Centre, Turner Road, Colchester, telephone 01206 314015:** A GP-led service providing treatment for minor injuries and illnesses, no appointment necessary. Open from 7am until 10pm. The centre also accommodates an x-ray facility with instant results provided. If the x-ray is normal, clinicians at the centre can offer advice and strapping, if needed. If the x-ray shows a fracture, the person will then need to visit A&E for appropriate treatment. This x-ray facility is open seven days a week between 9am-4.30pm.

**Clacton Minor Injury Unit, Clacton Hospital, Tower Road, telephone 01255 201594:** Nurse-led service providing treatment for minor injuries, e.g. cuts, sprains and fractures. Open from 9am until 9pm.

**North East Essex Clinical Commissioning Group (NEECCG)**

★ ★ ★ ★ ★ ★ ★ ★

## **LOCAL NEWS .....**

### **Highway Repairs**

Following various highway repairs that are being undertaken in the village Cllr Robert Bucke is also pushing for urgent repairs to be carried out in Pork Lane.

### **Village Shop/P.O.**

The latest rumours indicate that there may well be some good news in that there is a possibility of the above re-opening within the not too distant future.

### **Village Christmas Tree**

The donation of a Christmas Tree has been arranged by Cllr. Chris Keston and this will be erected outside the Village Stores. Carol Singing round the tree will take place on 19 December (for further details see elsewhere in the magazine.)



# Great Holland Folk Club

A new music club has been started in Great Holland.

The first session of the **Great Holland Folk Club** was a great success!

Musicians played concertina, melodeons, banjos, guitars, ukulele, violin, cello and mouth organ. Songs were sung and poetry recited. The evening is arranged as a 'round the room' session and caters for most skill levels.

Held once a month at the Church Parish Room (next to All Saints' Church in Church Lane), it is hoped that local musicians will come along and make this a firm date in their diary.

Held on the last Monday in the month the next two dates, covered by this publication, are:

**Monday 29<sup>th</sup> December and Monday 26<sup>th</sup> January 2015.**

For more details call Tom on 852195 or Ray on 676372



## Stour Choral Society

with

Frinton Parish Choir

&

Kingfisher Ensemble (Leader Beth Spendlove)

present



## CHRISTMAS CELEBRATION

Carols and great choral works

Special Guest

**Panos Karan**

Mozart Piano Concert in A major  
Conductor Duncan Archard



**FRINTON PARISH CHURCH**

Saturday 6<sup>th</sup> December 2014

7.00pm

Tickets £10 (students £5) available from the Church Office, Old Road, Frinton  
(open 9.30am-12.30pm Monday-Friday)  
Tel: 01255 679164 or 01206 395263

# Great Holland



# FOLK CLUB



**We meet on the LAST MONDAY of the month**

**All Saints' Church Hall  
Church Lane, Great Holland CO13 0JS**

**7.00 -9.30pm**

**For more details please ring either 676372 or 852195**

**VILLAGE HALL GREAT HOLLAND COMMITTEE of MANAGEMENT  
COMMITTEE MEETING  
GREAT HOLLAND VILLAGE HALL  
HELD ON 1st NOVEMBER 2014**

**PRESENT:-**

Sue Jenkins    Nickie Stack  
Sheila Watts   Robert Bucke  
Jim Stuart     Chris Keston

**APOLOGIES:-**

David Martin

**TOILETS:-**

Our first choice cannot now do the work. We have had three further quotes as follows

Mr Venables    £4,048

Mr Keston       £3,850

Ceramic Store   £1,314

The latter quote was rejected as too low for the work required. It was agreed to accept Mr Keston's quote as he agreed to stand by his quote of last year

**QUIZ NIGHT:-**

The quiz night is on 6<sup>th</sup> December and we are to supply a light supper of cheese and biscuits. Committee members are asked to be at the hall by six o'clock to set up the hall for the seven thirty start. Ben Eagle has agreed to play the piano for approximately half an hour during the interval.

**QUIZ HELD AT THE SHIP:-**

Due to a change of management the proceeds of the quiz held at the Ship Inn in aid of the hall have not been received. We are to approach the brewery to see if they will make up the missing £150. We are duty bound to proceed in this manner.

**ROOF:-**

The quote of £7,000 appears to be rather high but would include replacing all the tiles. Also it would include re battening and re felting. This needs to be addressed next year. The windows also need attention and will need to be addressed the following year.

**BACK WALL:-**

The back wall shows signs of water ingress and is probably rising damp. Mr Keston will have a look at the problem which may be able to be chemically treated but this method is not always 100% effective. We will wait to hear from him.

**FINANCE:-**

Since we changed our supplier the energy figures are looking better but we do not yet have a full year's figures to do a proper comparison. It has been noted that lights have been left on by our users occasionally which does not help. Although the £150 has not been received the hall has been used twice as a polling station at £160 for each hire

**OTHER BUSINESS:-**






Our new constitution is to be signed when all the committee members are present. Hopefully this will happen in the New Year.

**NEXT MEETING:-**

Our next meeting is scheduled for February 21<sup>st</sup> 2105 at 10.00am.

# WHAT'S ON IN YOUR VILLAGE HALL?



Day	Morning	Afternoon	Evening
Sunday			
Monday		<b>Tendring Male Voice Choir</b> 3.00 – 4.30 p.m. Contact: Ilze 813909 	<b>Cardio Vascular</b> 6.45 – 7.30 p.m. <b>Pilates</b> 7.30 – 8.30 p.m. Contact: Claudine 862505
Tuesday	<b>Fantari Dance and Fitness</b> 9.30 - 10.30 a.m. Contact: Sarah-Jane 688740  <b>Gentle Tai Chi with meditation</b> 11.00 a.m. - 12.30 p.m. Contact: Ruth 07724 133702	<b>Carpet Bowls</b> 2.00 – 4.00 p.m. Contact: Les Miller 671214	<b>Links Karate</b> 5.30 – 7.30 p.m. Contact: Paul Harris 830136  <b>Badminton</b> 9.00 – 10.30 p.m. 671300 
Wednesday		<b>The Coastal Singers (mixed voices)</b> 2.30 – 4.30 p.m. Contact: Ilze 813909	<b>Aerobics</b> 7.00 – 8.00 p.m. Contact: Claudine 862505
Thursday	<b>Tai Chi</b> 9.30 – 12.30 a.m. Contact: Des Exworth 679610 (additional classes are available)		
Friday			<b>Links Karate</b> 6.00 – 8.00 p.m. Contact: Paul Harris 830136
Saturday	 <b>Home Made Hour</b> 10.00 – 11.00 a.m. 1 <sup>st</sup> Saturday in the month (NOT January, February, August or October)		

**Rate for hire of Village Hall**

£10 per hour. Please contact Coralie Harris on 830136 to book. (Email: [coralieh@live.co.uk](mailto:coralieh@live.co.uk))  
 Updated March 2014

Neither the Rector, Church Wardens, Parochial Church Council nor the Editors take responsibility for the information given in, or views expressed in, the "Great Holland Village Voice". Nor is any culpability accepted for work done by advertisers.

## FROM THE ARCHIVES .....

### SCHOOL HALL IS PACKED FOR KIRBY CONCERT

As this is the Christmas issue, the article is about Christmas 1952 at school. Village children were now attending Kirby County Primary School since the closure of the village school.

Although rain was falling in torrents on Tuesday evening, Kirby Primary School Hall was packed to capacity with parents and friends of the pupils to see the children give their Christmas concert, always a favourite. Teachers had trained the children for their parts and each class gave original items.

Infants II opened the programme with a version of the Christmas story. Taking part were Rita Studd, Maureen Hill, Joan Elvin, Janet Lilley, Carol Mullinger, Margaret Brown, Valerie Pammen, Susan McHale, Ann Smith, Corinne Bedingfield, Eileen Moule, Mary Thorpe, Frances Thorpe, Gladys Russell, Doreen Pennell, Jean Smith, Sheila Stocks, Robert Gee, Stephen Gray, Kenneth Gray, Allan Ravenhill, David Mann, Jaques Garcia, Peter Harris, Brian Mills, Paul Hazell and James Turner.

Infants gave a two-act playlet which took the audience to Snowland to meet the snow fairies, their Queen and the fire elves. Later the young carol singers in the story were taken to a toy shop with Father Christmas to see the toys wake up. These children were Philip Pullen, Jennifer Baldwin, Diane Lilley, Shirley Sparling, Mary Poulter, Maureen McGregor, Sylvia Mann, Claire Harris, Leslie Fairchild, David Lott, Kenneth Keeble, Michael Clarke, Janet Knowles, David Moule, Doreen Kerry, Russell Gafney, Tony Taylor, David Sanderson, James Thompson, Barry Vernon, Richard Brazear, Nigel Bareham, Richard Thompson, Paul Gray, Gordon Barrell, Geoffrey Austin and John Parker.

Juniors III presented the traditional story of Dick Whittington. Moyra Bedingfield took the part of Alice at one day's notice as the original 'Alice' was ill. Others in the play were John Nicker, Paul Milwain, Vicky Bareham, Brian Harris, Zena Bray, Kenneth Tidmarsh, Michael Dews, Douglas Faircloth, Kathleen Condon and Valerie Towns.

The Mad Hatter's tea party and the court scene from 'Alice in Wonderland' made pleasing items by Juniors II. Taking part were Anne Denny, Evan Brazier, Brian Gordon, Peter Warren, Gerald Trot, Anne Higby, Reg Everitt, Ann Lott, Pat Mitchell, Eileen Mills, Brian Read, Michael Read, Richard Mann, Susan Richards, Bridget Condon, David Russell, Christopher Pinner, Roy Barton, Diana Handscombe, Sylvia Cockerill, Pat Hone, Barry Jackson, Brian Jackson, Tony Everett, Margaret Towns, John Tidmarsh, David Ling, John Nash, Desmond Myall and Brian Simmons. Announcer was Pearl Scott.

Juniors I gave a version of the classic story of Psyche and Cupid which had been dramatised by Mrs R A Furlong, headmistress. Those in the play were Erika Knowles, Pamela Faircloth, Shirley Tanner, Leonard Watson, Mary Thompson, Janice Miles, Irene Jackson, Jack McGregor, Jean Harris, Anne Ravenhill and Olive Beecroft.

Teachers and staff helping with the production were Mrs R A Furlong, Mrs O H Edwards, Mr D Prior, Mr P W Napper and Miss West. Mr Edwards helped at the door and parents and teachers made the costumes for the children.

On Friday the school hall was again crowded when the children had a carol service. As well as the old favourites the children sang a few which were not too familiar to their parents and quite a number of solos were also sung. Mrs Furlong was pianist for both the concert and service.

# Great Holland Pits Nature Reserve

## Iron Age Ponies

Over the last few years I have reported our attempts to manage the meadows and heath, at the reserve, using a large tractor drawn forage harvester and the flock of sheep belonging to the Essex Wildlife Trust. Grassland which is left uncut very soon becomes dominated by coarse grasses and scrub, and loses the wild flowers which give it its appeal. However the efforts of the last few years have greatly improved the vegetation on our open areas which have become flowery, buzzing with bumblebees and hoverflies imbibing the nectar.

For various reasons the flock hasn't been available for two years but this autumn we have been delighted to host four Exmoor ponies.

This breed is described as feral as they have bred on Exmoor without much human selection for a very long time. There is evidence that iron age Britons were making wheeled carts as early as 400 BC which were hauled by ponies, and some Roman carvings depict their horses as similar in appearance to the

This has led people to suggest that these animals were domesticated from the wild horses which roamed our landscape over much of the last 700,000 years. However investigations of their DNA suggest that they share much the same mix of genetic features as other breeds of domestic horse, though some of their features look similar to the original wild tarpan, from which modern horses were bred. Though their general colour is a variable shade of brown, they have markings described as mealy around their eyes, muzzle, flanks and underbelly. In common with other horses adapted to cold wet places they have extra-long eye lashes to deflect rain and a thick mane.

Our ponies were actually bred in Suffolk, part of a batch of eight, the other four of which have been grazing Tiptree Heath. Their parents however were ones rounded up from Exmoor.

They are extremely hardy and like coarse food. Immediately they arrived at Holland Pits, they started browsing vegetation including gorse, hawthorn, oak and thistle in addition to the grass. They are males which have been gelded, but still display signs of a social pecking order, doing sideways swipes with their head, mouth open to show teeth, and occasionally rearing up on to hind legs and running around briskly.

I hope that their habit of pulling out tufts of grass and their moderate compaction of the soil will open up the sward and encourage germination of flower seeds and leave some bare soil which will encourage invertebrates by creating dry sunny patches. I am looking forward to the warm weather next year to assess their effect on the meadow.

**Bob Seago  
Warden**



# Life in Great Holland 1969-1990

*Pat Anson recalls her life at 'The Rosery', a large house (since demolished) on land now occupied by the Rosery Mews complex.*



We moved to Great Holland in August 1969 when my daughter Jane was five and my son Colin was two.

We bought 'The Rosery' because we wanted the large 1½ acre garden. The house was then owned by Mrs Dorothy Whistler, who moved to Westbury Road. I think her family ran The Rosery and adjoining land as a sort of nursery and apple farm.

The Rosery was a large, pink, five-bedroomed house with three reception rooms and two 'sort of' kitchen areas. It needed a lot of work but we eventually got it 'tidy'. I became an expert plasterer.

The garden was magnificent with two large lawns. We had to buy a ride-on lawn mower. We turned one lawn into a 'Heath Robinson' tennis court. There was an orchard with 120 apple trees and over 70 rose bushes, hence the name The Rosery. Many local children learnt to drive around our orchard!

Before we bought the house we had driven from Surrey to meet and persuade Mr Jack Bray, who lived in the village, to continue to help us in the garden. He did, thank goodness! He came twice a week for many years, and taught me all about vegetable gardening. We grew everything (except potatoes), and what we did not eat he encouraged me to sell at the gate. Jack had a thing about lettuce, so between every row of vegetables he put a row of lettuce - I do not eat lettuce any more! At one time we had more than 60 blackcurrant bushes. People would order so many lbs and I would pick them - I used to dream about blackcurrants.

Apple tree pruning was a job I didn't care for. It was done early in the year, when it was usually wet and cold. The picking was more fun, but my back has suffered from lifting heavy wooden crates of apples up to the barn. We sold a lot at the gate and made cider once, which wasn't a success.

Another of Jack's ideas was to grow two long rows of sweet peas. They were beautiful. They were popular with Mrs Archer who ran Archers Restaurant in Frinton. I was a bit scared of her then but we became friends later in life.

I became involved with village activities, such as the W.I and the Young Wives Club at the Church. I helped organise the Village Children's parties for many years, I cleaned the brass and did the flowers at the Church. The Derby & Joan Club was another of my jobs - I did the teas and the raffles and helped with the outings and the jumble sales. All of these activities (except the W.I.) were headed by the Reverend Ken Walters. He gave a very enjoyable family service once a month. I must confess I didn't go to Church after he died so unexpectedly.

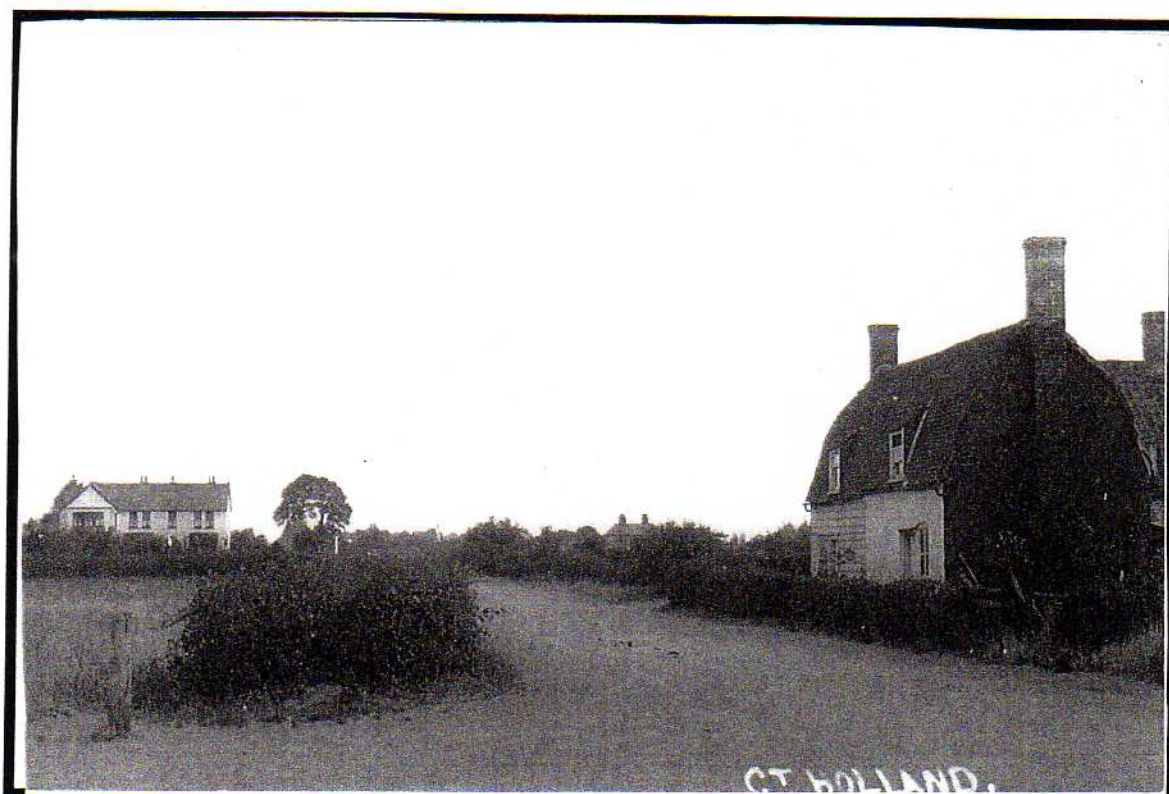
One special village character was Miss Lily Clicitt. She was an ex-RAF cook and made lovely cakes for every local event. She always wore a felt hat and walked with a shopping trolley. We missed her when she died.

One of my favourite jobs was the Great Holland Village Fête teas. Lots of ladies made cakes and I organised the liquid refreshment. All of this took place in the Old Rectory kitchen, and when the fête was over, Mrs Quick gave us all a gin and tonic - it was hard work but fun.

Just to keep me busy we decided to keep fifty hens. (I refused to keep pigs in our two pigsties.) I called the hens my girls and we all enjoyed their eggs. It wasn't good when I forgot to shut them up for the night! A fox got about a third of them.

I wonder how I found time to do all this, plus cooking, cleaning and washing for my family. I did however enjoy my life in Great Holland. It was a great place to live and bring up a family.

**Pat Anson**





# Walton and District Food Bank

## Walton Food Bank – update

In the August/September issue of Village Voice I wrote about the proposal to have a collection point at All Saints' Church in Church Lane for donations of food/toiletries to the Walton Food Bank. I'm pleased to say that this is working pretty well and most weeks I'm able to take a boxful of items to the trailer at the Walton Community Centre. To all those who have helped so far a big thank you. But there is a continuing and ever growing need for donations to be distributed to those struggling to provide food for themselves and their families due, amongst other things, to benefit cuts, rising cost of living and household debts. All recipients of food parcels have been referred by doctors, social services or welfare officers as being in great need of help.

The Food Bank operates chiefly as an emergency supply for such people rather than as a weekly 'hand out'. Items most needed are dried/canned items (non-perishables) and toiletries/soap powder etc. Lists of urgently needed goods are updated weekly (see below) plus, as an extra with Christmas in mind: tinned ham or salmon, mince pies, small Christmas puddings and Christmas crackers. If you are able to put a few things in the collection box, even occasionally, it would be a tremendous help. The box is just inside the church porch (open every day) and is taken to Walton every Monday morning for distribution by the volunteer Food Bank team on Fridays. Thank you for reading this – and hopefully for future contributions.

**Judith Little**  
**(Churchwarden, All Saints' Great Holland)**

Dear All,

Demand for the Food Bank is on the increase at the moment so we are going through our stock quite quickly. At the moment, we are short of:

- Tinned Potatoes
- Instant Mashed Potatoes
- Tinned Custard
- Tinned Rice Pudding
- Breakfast Cereals
- Tinned Fruit
- Jam / Marmalade
- Shampoo
- Toothpaste
- Washing up Liquid

As ever, many thanks for your generous support.

**Dick Bloxside**  
**Administrator, Walton & District Community FoodBank**

# Walton and District Community FoodBank

***Can you help us by making a donation?***

***We need foodstuffs such as:***

Soup – Tinned or Packet  
Tinned Meat – Stewing beef, Ham, Corned Beef, Sausages, Steak & Kidney Pudding, Chicken Pie...  
Tinned Fish – Tuna, Salmon, Pilchards...  
Potatoes – Tinned or Instant Mash  
Vegetables – Peas, Carrots, Sweet Corn, Tomatoes, Baked Beans...  
Long Grain Rice – bags or sachets  
Pasta – Dry or Tinned in sauce  
Pasta Sauces, Cook-In Sauces  
Table sauces & Condiments– Tomato Ketchup, Brown sauce, Salt, Pepper  
Tinned Fruit – Peaches, Pears, Apricots, Mandarin Oranges...  
Tinned Custard or Rice Pudding  
Packet Pudding Rice  
Jelly  
Packet deserts – e.g. Instant whip  
Tea  
Coffee  
Cocoa / Drinking Chocolate  
Sugar  
Milk - UHT cartons or Tinned  
Fruit Squash  
Breakfast Cereals  
Biscuits and snack bars  
Preserves - Jam, Honey, Marmalade, Peanut Butter, Chocolate Spread...  
Children's treats

***And hygiene items like:***

Washing-up Liquid  
Washing-up Sponges / Cloths  
Household Cleaners  
Washing Powder  
Kitchen Paper  
Soap  
Toothpaste  
Toothbrushes  
Shampoo  
Shower Gel  
Deodorant  
Towels  
Face Flannels  
Toilet Rolls  
Nappies  
Sanitary Towels

***Unfortunately we cannot accept any Out-of-Date tins, jars or packets. Nor any fresh or perishable foods such as:***

Fresh fruit or vegetables  
Fresh fish, meat or poultry  
Bread, cakes or other bakery products  
Eggs  
Milk (except Long-life UHT)  
Cheese, butter, or other dairy products  
Any Chilled or Frozen foods

**Walton and District Community FoodBank**

*In Association with*

**Walton Churches Together**

*Providing emergency Food Aid to the most needy in our community*

## **CARADOC SURGERY – PATIENT PARTICIPATION GROUP (PPG)**

Our group was set up February this year and we now have 66 members. So, what's the point of a PPG and what do we do? In simple terms it's about promoting co-operation between the practice and the patients for mutual benefit and providing the means to feed back any patient concerns (not complaints) and ideas for improvement.

So far, we've had seven meetings. This is a higher number than anticipated but it's been a busy time with setting up the group and dealing with concerns about the surgery. At each meeting we've had a surgery up-date and both the Practice Manager and Dr Meleka attended most meetings. Our local MP, Douglas Carswell attended on two occasions. On a more lighter note, to raise funds one of our members arranged a Strawberry Tea event in June, which was very successful and most enjoyable. We've also published two newsletters.

Caradoc patients who attended the Frinton Residents' Association (FRA) open meeting on 1 November were the first to hear the news that Dr Meleka, the one remaining permanent doctor at the practice had, for personal reasons, decided to relinquish her contract to NHS England. From 3 November Caradoc Surgery has been run by a consortium of providers who already deliver community and primary care services to patients in North East Essex. They are Anglian Community Enterprise (ACE), GP Primary Choice Limited and Supporting Health (Essex) Limited. The contract is for a period of one year while NHS England undertakes a procurement process to find a permanent provider.

Nicola Carmichael, Operations Director of ACE attended the FRA meeting and explained that ACE already provide community health services including running three GP surgeries in Clacton, Jaywick and Holland-on-Sea. The other partners would be providing practice management support and medical leadership.

At the PPG meeting on 4 November, Mr Ian Stidston, Director of Commissioning, NHS England; Sharon Charlton, Director of Resources, ACE; Steph Kettle, Interim Practice Manager and Julie Cottee, Nurse Practitioner, were guests. It was reassuring to hear that existing staff had been transferred to the new provider and that it was 'business as usual' at the practice. Indeed, changes had already been put in place.

The appointment system has been completely revamped and the new system, being trialled for six weeks, offers seven 2.5 hour doctor-led sessions a day, four in the morning and three in the afternoon. Patients can make appointments up to six weeks ahead, on the day are for emergency only but, if necessary, it should be possible to see a doctor within 48 hours. It was pointed out that the two Nurse Practitioners can deal with certain conditions and minor illnesses. There are currently four locum doctors plus a clinical lead at the surgery. New administration staff have been hired to ease the workload and a new Practice Manager will take over from Steph Kettle at the end of the month.

A busy and very informative meeting giving members the opportunity to ask questions and to hear first-hand what is happening at the surgery.

Jenny Heard, Secretary, Caradoc Surgery P.P.G.

## THORPE SURGERY NEWSLETTER

Greetings from Thorpe Surgery. At the time of writing the plans are coming together for the opening of the Kirby Branch. We have been accepting registration forms now for some time for patients wishing to join our list but the main bulk of patients will be transferring in December. We have of course made every effort to ensure that medical records will transfer electronically which means that our Doctors will have immediate access to patient medical history. There are going to be some records that will not transfer electronically, especially large records, and to help us with the transfer we do ask that patients fill out all the forms in full, in clear writing and provide us with a repeat medication slip if they have one. This will mean that we will be able to copy over existing medication for ordering.

We have made lots of alterations to the surgery at Thorpe to help us cope with the increase in demand for our services, including improvements to the telephone and computer systems. We very much look forward to providing the residents of Kirby with the same level of care we have been providing to Thorpe and the surrounding villages. The clinical staff and our new clinicians have been preparing the premises for the 1<sup>st</sup> December opening, and the new administration staff have been trained. I am sure there will be minor glitches but we are ready to deal with these as and when.

With Christmas fast approaching we are all busy making preparations for the holiday period, we will not issue double medication for Christmas but ask that you order in advance if necessary to avoid running out. We will only be shut Christmas Day, Boxing Day and New Years Day. On all other working days we will be open as usual for appointments etc. If you have visitors coming to stay at Christmas, remind them to bring enough medication with them - it's very distressing for elderly people especially to run out away from home.

I hope you have had a flu jab if you are in one of the at risk groups, as the weather gets colder flu does the rounds and it can really spoil the festive season if you are unlucky enough to catch it. For usually healthy people a few days rest with over the counter medication is enough to recover but for those with underlying conditions like asthma or COPD medical attention may be needed.

All of the staff here at Thorpe and Kirby would like to wish you a very healthy and happy Christmas and New Year. 2015 will bring its own challenges and triumphs for each of us. If you are a smoker why not start thinking about 2015 being your year to quit. Smoking cessation advice is available at the surgery and the nursing staff are always happy to advise on how to improve your health be it getting control of your diabetes or weight or other problems.



## FRINTON LATE NIGHT SHOPPING EVENT

Friday 12<sup>th</sup> December 2014

5.00- 9.00pm

# Flooding advice from the Police

## Driving



### Know the risks

- Many cars will start to float in as little as 12 inches of water. This can be extremely dangerous; as the wheels lose grip, and you will lose control - with the obvious risks and consequences. The engine air intake on many cars is low down at the front of the car; just an egg cupful of water ingested into the combustion chamber is sufficient to destroy an engine. Water does not compress, resulting in bent or broken con rods or split engine block. Driving too fast, even in relatively shallow water can cause water to be ingested.

Even appropriate fording can cause costly damage. The catalytic converter, (part of the exhaust system) which works at extremely high temperatures, can crack upon contact with cold water, requiring costly replacement.

### Avoiding costly damage

Only drive through flood water if you know it's not too deep. This will be no deeper than the lowest part of the vehicle's bodywork, (usually the bottom of the spoiler (front panel) or sill panel, (below the doors).

Do not attempt to drive through fast-moving water, such as at a flooded bridge approach - your car could easily be swept away, even at modest depths.

With standing water, physically test the depth of the water with a pole (wade in, if necessary, but only where it is safe to do so), or observe the depth against other vehicles that cross successfully. Just because other vehicles are successful does not mean it is appropriate to follow. If in doubt....don't!

If you have to drive through water, select a low gear so the engine revs are higher, slipping the clutch if necessary or, for automatic vehicle, select the lowest ratio and balance the throttle and brakes. Before entering, consider other drivers - pass through flooded sections one car at a time, don't drive through water against approaching fording vehicles. Drive slowly and steadily to avoid creating a large bow wave. Test your brakes as soon as you leave the water.

### If you get stuck

If the worst happens and you break down: firstly, ensure the safety of all involved, including other road users. Do not repeatedly try to start the engine, (this may cause further damage). Call for recovery and wait in a safe place.

# **STREET MEETS BY ESSEX POLICE**

**(Come and meet your PCSOs and discuss any issues you may have)**

**Every Friday Morning at Gt. Holland Village Hall  
Manor Road, Gt. Holland  
10.00 a.m. – 11.00 a.m.**

## **INCIDENTS .....**

I am unable to include all incidents that have been reported due to their sensitive nature. (Reports from 21/09/14 to 21/11/14)

- 1 x Abandoned vehicle
- 1 x Insecure vehicle
- 1 x Vehicle in ditch reported on marshes
- 2 x Road traffic accidents
- 2 x Suspicious circumstances (all in order)
- 1 x Criminal damage to a tyre
- 1 x Stolen vehicle. Vehicle recovered and two suspects arrested. Good work by local units

## **NEWS .....**

As you can see from the above Essex Police have started to do a Street Meet in Gt. Holland. Someone will be at the Village Hall every Friday morning unless we have been called away to a serious incident. Also, I am now on Twitter and you can follow me on PcsO Paul Brassey. I regularly update crime advice and what is going on in the area.

Over the last couple of months we have been suffering from house and shed burglaries in the Frinton and Walton areas. Please be vigilant and secure all your property. Ensure windows and doors are locked when you go out. Also fit a good lock to your shed or garage. You can find advice if you go to the following web site on your computer – [http://www.essex.police.uk/be\\_safe.aspx](http://www.essex.police.uk/be_safe.aspx).

Also just a reminder now that Christmas is fast approaching. Please do not leave presents or valuables in full view. Lock away in the boot of your car. Also, try not to leave presents on view in your house, particularly ensure there is nothing that can be seen through any window.

We also offer a post-coding service whereby we will visit your property and code your TVs, cycles, etc. This is a free service. Just contact us at Walton Police station in order that we can arrange a visit.

Finally, all at Walton Police Station would like to wish the residents of Gt. Holland a very Happy Christmas and New Year.

Keep safe.

**PCSO 70843 Paul Brassey  
PCSO 6477 Michele DISS  
Walton Police Station  
Martello Road  
Walton-on-naze  
Tel: 101, ext.487553  
Community Phone No. 07850 631017**

[paul.brassey@essex.pnn.police.uk](mailto:paul.brassey@essex.pnn.police.uk)  
[michele.diss@essex.pnn.police.uk](mailto:michele.diss@essex.pnn.police.uk)

