



Also available in colour at [www.greatholland.com](http://www.greatholland.com)

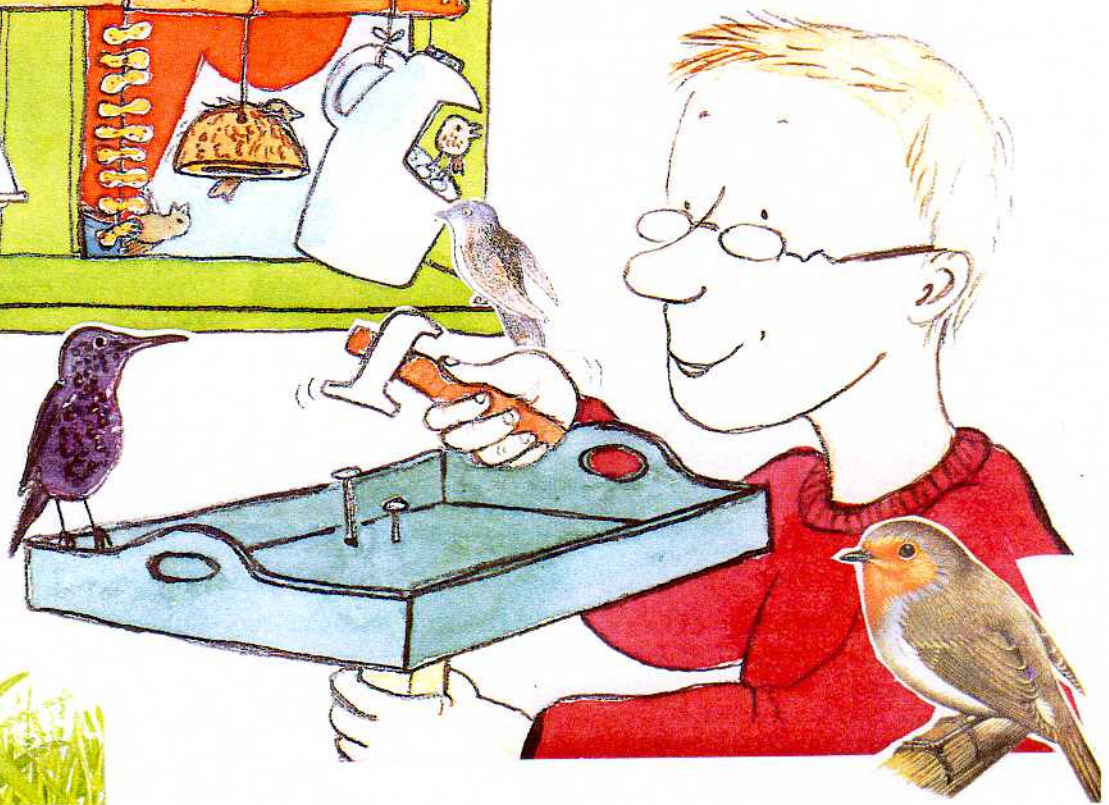
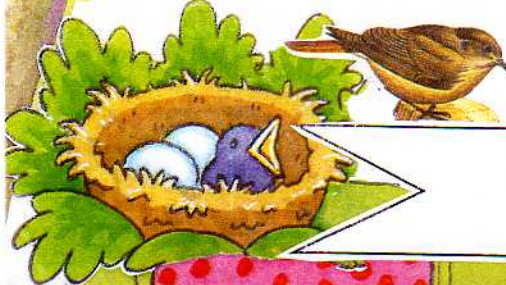
70p where sold



# Great Holland Village Voice



April & May 2016





... to the April/May edition of **Village Voice**.

## REMINDER:

★ Saturday 14<sup>th</sup> May, 10.00 for 10.30am ★  
AGM of Great Holland Residents Association, in the Village Hall, Manor Road

### Included in this edition...

- News of forthcoming events to celebrate the 150<sup>th</sup> Anniversary of the rebuilding of All Saints' Church
- Details of the Village Tea Party to celebrate the Queen's 90<sup>th</sup> birthday
- A new advertiser - 'Village Fires Ltd' (see advert at rear of magazine)

Thank you to everyone who has contributed to this edition of Village Voice. We always welcome new contributors. Is there anything that **YOU** would like us to include in the next edition? For example:

- Are there any events happening in June or July that you wish to publicise?
- Do you have any local news items to be included?
- Do you want to tell other villagers about a local group/club?
- Can you write an article for the magazine?
- Do you want to advertise any items for sale/your business/service?

Please contact Linda on **852195** or Sandra on **672453** with details, two weeks before the printing date if possible. Please note that Sandra deals with the advertising side of the magazine.

The next edition of Village Voice will be printed on:

**Monday 30<sup>th</sup> May**



### Contents

Village Contacts and Local Information

Dates for your Diary

All Saints' Church

Methodist Church

Village news & articles

Advertisements






# VILLAGE CONTACTS & LOCAL INFORMATION

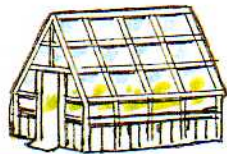
<b>Member of Parliament</b>	Mr Douglas Carswell MP	475384
<b>Residents' Association</b>	Paul Fletcher-Tomenius (Chair)	675268
<b>All Saints' Church</b>	Rev. Mark Holdaway	675997
<b>Methodist Church</b>	Rev. Eva Walker	851179
<b>Village Hall Committee</b>	Ms Sue Jenkins (Chair) Mrs Coralie Harris (Bookings)	850317 830136
<b>Frinton &amp; Walton Town Council</b> (incorporating Frinton, Walton, Kirby and Great Holland)	Mrs Myrna Liles (Town Clerk) Cllr. Mr Christopher Keston	676666 850067
<b>Tendring District Council</b>	Town Hall, Station Road, Clacton CO15 1SE  Cllr. Mr Robert J Bucke Cllr. Mr Mark A Cossens	686868 Emergency/out of hours: 2220220 677495 861374
<b>Essex County Council</b>	Cllr. Mr Michael (Mick) Page	672410
<b>Dog Warden</b>	(Tendring District Council)	686787
<b>Cats Protection</b>	Tendring District Branch	744014
<b>RSPCA</b>	National contact number: Charity Shop, Frinton:	0300 1234 999 674926
<b>National Rail Enquiries</b>	National line	03457 484950
<b>Essex Police</b>	Non-emergency	101
<b>Crime Reduction Officer</b>	David Gillies	101
<b>Crimestoppers</b>	National line	0800 555111
<b>Citizens Advice</b>	(Clacton)	0844 4770808
<b>Tendring Dial-a-Ride</b>	Hurlingham Chambers, 61-65 Station Road, Clacton on Sea, CO15 1SD	436962
<b>Colchester General Hospital</b>	Turner Rd, Colchester CO4 5JL	01206 747474
<b>Civic Amenity Tip</b>	Maltings Lane, Kirby-le-Soken.  <b>Winter opening times</b> (16 <sup>th</sup> October – end of February): 9.00am-4.00pm  <b>Summer opening times</b> (1 <sup>st</sup> March-15 <sup>th</sup> October): 9.00am-5.00pm. Summer late night opening no longer takes place.  <b><u>Closed on Tuesdays and Wednesdays</u></b>	

# Dates for your Diary ...



## April

<b>Saturday 2<sup>nd</sup></b>	<b>Home Made Hour:</b> Village Hall, 10.00-11.00am	
<b>Thursday 7<sup>th</sup></b>	<b>Coffee Morning:</b> Methodist Church, 10.30am-12.00 midday <b>Meeting of Friends and Neighbours of Great Holland:</b> 2 Great Holland Court (opposite Village Hall), 2.00pm.	
<b>Thursday 14<sup>th</sup></b>	<b>Coffee Morning:</b> Methodist Church, 10.30am-12.00 midday	
<b>Wednesday 20<sup>th</sup></b>	<b>Film night: 'Chocolat':</b> Great Holland Methodist Church, 7.00pm. Free entry. More details inside magazine.	
<b>Thursday 21<sup>st</sup></b>	<b>Coffee Morning:</b> Methodist Church, 10.30am-12.00 midday.	
<b>Friday 22<sup>nd</sup></b>	<b>Church History Evening:</b> All Saints' Church. More details inside magazine.	
<b>Monday 25<sup>th</sup></b>	<b>Kirby &amp; Great Holland Book Club:</b> Church Parish Room (next to All Saints' Church) 10.00-11.am. More details inside magazine.	
<b>Thursday 28<sup>th</sup></b>	<b>Coffee Morning:</b> Methodist Church, 10.30am-12.00 midday.	




## May



<b>Thursday 5<sup>th</sup></b>	<b>Coffee Morning:</b> Methodist Church, 10.30am-12.00 midday <b>Meeting of Friends and Neighbours of Great Holland:</b> 2 Great Holland Court, 2.00pm.	
<b>Saturday 7<sup>h</sup></b>	<b>Home Made Hour:</b> Village Hall, 10.00-11.00am	
<b>Thursday 12<sup>th</sup></b>	<b>Coffee Morning:</b> Methodist Church, 10.30am-12.00 midday.	
<b>Saturday 14<sup>th</sup></b>	 <b>AGM OF GREAT HOLLAND RESIDENTS ASSOCIATION</b> <b>Great Holland Village Hall, 10.30am</b>	
<b>Thursday 19<sup>th</sup></b>	<b>Coffee Morning:</b> Methodist Church, 10.30am-12.00 midday	
<b>Thursday 26<sup>th</sup></b>	<b>Coffee Morning:</b> Methodist Church, 10.30am-12.00 midday	
<b>Saturday 28<sup>th</sup></b>	<b>Great Holland Village Hall AGM:</b> Village Hall, 11.30 am. ALL ARE WELCOME.	
<b>Sunday 29<sup>th</sup></b>	<b>Great Holland Pits Open Day with pond dipping:</b> Starts 11:00am.	

## June

<b>Wednesday 1<sup>st</sup></b>	<b>Quiz evening with Fish &amp; Chips:</b> Great Holland Methodist Church, 7.00pm. Tickets (£5.50) must be purchased in advance. More details inside magazine.	
<b>Thursday 2<sup>nd</sup></b>	<b>Frinton Festival Concert:</b> All Saints' Church, 7.30pm. More details inside magazine.	
<b>Sunday 12<sup>th</sup></b>	<b>Tea Party in Village Hall, to celebrate the Queen's 90<sup>th</sup> birthday</b>	

To include events for **June or July** in the Diary section of the next edition of **Village Voice**, please contact Linda on **852195** or Sandra on **672453** by **15<sup>th</sup> May** if possible.

# All Saints' Church

## Rector's article ...

I recently heard the story of Violet Jessop, known to her friends as "Miss Unsinkable".

You undoubtedly know of the Titanic, but Violet was well acquainted with the Titanic and its two sister ships, the *Olympic* and *Britannic*.

At age 23, Violet boarded the RMS *Olympic* on 14<sup>th</sup> June 1911 to work as a stewardess. On 20<sup>th</sup> September 1911, the *Olympic* collided with the protected cruiser HMS *Hawke* off the Isle of Wight. Although the incident resulted in the flooding of two of her compartments and a twisted propeller shaft, *Olympic* was able to limp back to Southampton.

Only six months later, Violet boarded the RMS *Titanic*, again as a stewardess. Four days later, on 14<sup>th</sup> April, the *Titanic* struck an iceberg in the North Atlantic and sank. Violet was ordered into lifeboat 16 and saved. 1500 people died.

During the First World War, Violet served as a stewardess for the British Red Cross. On the morning of 21<sup>st</sup> November 1916, she was on board His Majesty's Hospital Ship *Britannic*, a second sister ship to the *Titanic*. When the ship struck a sea mine it quickly sank in the Aegean Sea. While the *Britannic* was sinking, Violet jumped out of a lifeboat to avoid being sucked into the *Britannic's* propellers. She was sucked under the water anyway, and struck her head on a lifeboat's keel before surfacing and being rescued.

Unsurprisingly, Violet's friends knew her as "Miss Unsinkable". She had cheated death a number of times, but you wouldn't say she'd beaten death, she'd only put off the inevitable. In fact it caught up with her in 1971 at the age of 83.

The story of Easter is not one of Jesus cheating death, but of its defeat. Easter is about the death of Jesus and his resurrection; not a great medical rescue to die again, but of breaking through death to new life on the other side. The message of Easter is one of hope. It's one that gives us the chance to approach the inevitable with hope and confidence.

---

That is something that has been at the heart of the church all through the ages, now or 150 years ago. Can I therefore make sure that I invite you to our All Saints' Church History Evening on Friday 22<sup>nd</sup> April (more details in church and elsewhere in the *Village Voice*) as we continue to celebrate the 150<sup>th</sup> Anniversary of the rebuilding of All Saints'.

Mark



## From All Saints' Diary - APRIL:

Saturday	2 <sup>nd</sup>	10.00am	<b>HOME MADE HOUR</b> For dates of the Bible Study meetings at the Parish Room at 11.00am please see the notice sheet or church notice board.
<b>Sunday</b>	<b>3<sup>rd</sup></b>	<b>11.00am</b>	<b>Morning Worship with our Sunday School</b>
Wednesday	6 <sup>th</sup>	2.00pm	Friendship & Interest Group at St Michael's Church Hall
<b>Sunday</b>	<b>10<sup>th</sup></b>	<b>8.00am</b> <b>11.00am</b>	<b>Joint Holy Communion with our friends from St Michael's</b> <b>Morning Worship</b>
<b>Sunday</b>	<b>17<sup>th</sup></b>	<b>11.00am</b>	<b>Holy Communion</b>
Wednesday	20 <sup>th</sup>	2.00pm	Friendship & Interest Group at St Michael's Church Hall
Friday	22 <sup>nd</sup>	7.00pm	Church and Village History Evening in the Church. Drinks and nibbles will be available.
<b>Sunday</b>	<b>24<sup>th</sup></b>	<b>11.00am</b>	<b>Morning Worship</b>
Tuesday	26 <sup>th</sup>	2.30pm	'Teapot' at the Baker Hall
<b>Thursday</b>	<b>28<sup>th</sup></b>	<b>7.30pm</b>	<b>APCM in the Parish Room</b>

## From All Saints' Diary - MAY:

<b>Sunday</b>	<b>1<sup>st</sup></b>	<b>11.00am</b>	<b>Morning Worship with our Sunday School</b>
Monday	2 <sup>nd</sup>		Early May Bank Holiday
Wednesday	4 <sup>th</sup>	2.00pm	Friendship and Interest Group in St Michael's Church Hall
Saturday	7 <sup>th</sup>	10.00am	HOME MADE HOUR
<b>Sunday</b>	<b>8<sup>th</sup></b>	<b>8.00am</b> <b>11.00am</b>	<b>Joint Holy Communion with our friends from St Michael's</b> <b>Morning Worship</b>
<b>Sunday</b>	<b>15<sup>h</sup></b>	<b>11.00am</b>	<b>Holy Communion</b>
Wednesday	18 <sup>th</sup>	2.00pm	Friendship and Interest Group in St Michael's Church Hall

<b>Sunday</b>	<b>22<sup>nd</sup></b>	<b>11.00am</b>	<b>150<sup>th</sup> ANNIVERSARY SERVICE OF ALL SAINTS', WITH THE BISHOP OF CHELMSFORD, STEPHEN COTTRELL &amp; our friends from St Michael's.</b>
---------------	------------------------	----------------	--

Tuesday	24 <sup>th</sup>	2.30pm	'Teapot' at the Baker Hall
---------	------------------	--------	----------------------------

<b>Sunday</b>	<b>29<sup>th</sup></b>	<b>11.00am</b>	<b>Morning Worship</b>
---------------	------------------------	----------------	------------------------



## **FUTURE DATE FOR YOUR DIARY:**

Thursday 2<sup>nd</sup> June at 7.30pm



## **FRINTON MUSIC FESTIVAL:**

The unique sound of string quartets across the fields in All Saints' Church. Music by Wolf, Saint Saens and Beethoven. Celebratory peal of bells at 6.45pm. The church will be filled with flowers and illuminated by candles. This concert forms part of the All Saints' 150<sup>th</sup> Anniversary Celebrations.

## **FUNERALS:**

We offer our condolences and prayers to the family and friends of:

**John Weller (85)** Eton Road, Frinton-on-Sea All Saints' & Colchester Crematorium

## **ALL SAINTS' PARISH CHURCH WHO'S WHO**

**RECTOR:** Rev. Mark Holdaway, The Rectory, 10 Thorpe Road, Kirby Cross CO13 0LT (675997)

**CHURCHWARDENS:** John Beale, 5 Malting Lane, Kirby le Soken CO13 0EH (676472) and Judith Little, Lambourn House, Little Clacton Road, Great Holland, CO13 0EY (813645)

**PAROCHIAL CHURCH COUNCIL:** Churchwardens (ex officio), Sheila Watts (ex officio), Don Osler, Vanessa Giles, Ilze Robertson, Graham Hughes and Ann Peters

**HON. SECRETARY TO THE PCC:** Judith Little

**VICE CHAIR TO THE PCC:** John Beale

**HON. TREASURER TO THE PCC:** Sheila Watts c/o The Rectory, 10 Thorpe Road, Kirby Cross CO13 0LT (675997)

**SIDESPERSIONS:** Rose Batten, Don Osler and Sheila Watts

**MAGAZINE PRODUCTION TEAM:** Sandra Mooney and Linda O'Reilly (Joint Editors), Mim Wilson, Irene Lightowler, Ingrid Harding, Judith Little, Audrey Warren, June Forrest, Charmian Goundry, Iain Bell, Eileen Derrick, Christine Oxford, Chris Crispin, Robert Caines, David Bavister, Sheila Watts and Phyllis Margetts (Distributors)

## **The Parish Room - All Saints' Great Holland ...**

... situated next to All Saints' Church in Church Lane, is available for bookings from the general public. The accommodation comprises a pleasant carpeted room with six easy chairs, plus seating for about a dozen people, a small kitchen with tea/coffee making facilities and microwave, entrance hall and two toilets (one disabled). Cost of hire is £5 per hour from May - September and £7 per hour October - April (to cover extra heating and lighting costs). To hire the Hall please contact **Judith Little** on **813645**.

# ALL SAINTS', GREAT HOLLAND - 150<sup>th</sup> ANNIVERSARY 2016

The celebrations for the 150<sup>th</sup> anniversary of the rebuilding of the church began on 7<sup>th</sup> February with a rousing Songs of Praise led by Andrew Merchant of Radio Essex. Well-loved hymns with personal introductions and anecdotes were enjoyed by an enthusiastic audience - a lovely start to this very special year.

**Bookmarks and flyers with all our anniversary events on have been widely distributed and are also available in the church (open during daylight hours).**

**Friday 25<sup>th</sup> March and Sunday 27<sup>th</sup> March** - We shall of course be celebrating Easter with our usual services on Good Friday at 2.00pm and Easter Sunday at 11.00am.

**Friday 22<sup>nd</sup> April** sees our next special event with a Church & Village History Evening. Liz Bruce, our local historian, is kindly supervising the exhibition of old photos, plans, articles, records and artefacts of Great Holland in the 19<sup>th</sup> century, and particularly in the 1860s around the time the old church had fallen into such disrepair it had to be demolished and rebuilt. Liz will give a short talk on life in our village in Victorian times and drinks and nibbles will be available during the evening. Everyone is warmly invited to come to this very special event - it starts at 7.00pm and is free of charge! (If you have anything which might be of interest for this do please contact us).

**Sunday 22<sup>nd</sup> May** - We are holding our Anniversary Service with the Bishop of Chelmsford. This is almost 150 years to the day of the Consecration of the New Church in 1866 on Friday 25<sup>th</sup> May. We have old newspaper reports of that day with details of the service and those attending (copies can be seen at the History Evening). This is expected to be a very popular event, but again all are most welcome.

**Thursday 2<sup>nd</sup> June** features the opening concert of the Frinton Festival to be held at All Saints' Church. Further information: email [frintonfestival@gmail.com](mailto:frintonfestival@gmail.com) or call 01255 319141 - leaflets also in Church.

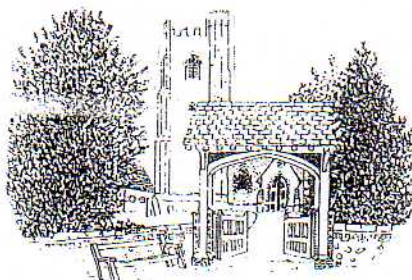


**Friday 25<sup>th</sup> June** - Barn Dance at Great Holland Hall Farm by kind permission of Roger and Margaret Frere. Ticket details and more information in next Village Voice.

**Saturday 16<sup>th</sup>/Sunday 17<sup>th</sup> July** - We shall be holding a Flower Festival open to the public both days, with the Tower being open to the public at specified times over the week-end.

Admission free with refreshments available both days.

**We hope there is something here which will appeal to you  
and look forward to welcoming as many of you as possible at these events**







# GREAT HOLLAND VILLAGE & CHURCH FÊTE 2016

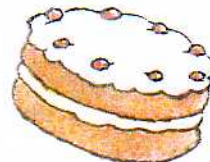
**Saturday 6<sup>th</sup> August: 2.00 - 5.00pm (gates open 1.45pm)**

Preparations are already underway for this year's Fête in the Old Rectory's lovely grounds! We are sure everyone will appreciate that a lot of work goes on behind the scenes to make this event the success it has become. Please can we ask you once again to help again in the following ways?

- Put the date in your diary and plan to be there!
- Can you provide items for the bric-a-brac stall, White Elephant stall, book stall or Silent Auction, or items that would make good prizes?
- Can you provide items for the produce stall, such as jam, marmalade or home grown fruit and vegetables? The cake stall is always popular so we would be very grateful for any home made cakes.
- Can you help with preparation on the days leading up to the Fête?
- On the day of the Fête, can you help with the parking, refreshments or on a stall?
- After the event, we always need help with clearing up on Saturday night and Sunday morning.

If you can help in *any* way, have items to be collected or can bring cakes on the day, please contact **Sue Jenkins on 850317** or **Nicky Stack on 677984**. We look forward to seeing you on **6<sup>th</sup> August**.

## Home Made Hour



Thank you to everyone who supported our March Home Made Hour and for the generous donations of home made goods and produce.

Our next Home Made Hours will take place on:

**Saturday 2<sup>nd</sup> April and Saturday 7<sup>th</sup> May from 10.00-11.00am in the Village Hall**

Please join us for tea, coffee, friendly company, and the sale of home made cakes, jam, marmalade, trifles, savouries, scones etc and occasional plants/garden produce. Refreshments are available and we also have a raffle.

Our friendly Home made Hours help to raise funds for All Saints' Church. **THANK YOU** to everyone who supports these events, Are you able to provide any items for our Home Made Hours, please? We would be particularly grateful for donations of home made cakes, which are always popular. We also welcome home made preserves and any surplus, fruit, vegetables or plants from the garden. If you want to find out more about our Home Made Hours, please contact Nickie Stack on **677984**.





## **A DATE FOR YOUR DIARY**



## **QUEEN'S BIRTHDAY CELEBRATION TEA**

**Village Hall**

**Manor Road, Great Holland**

\*\*\*\*\*

**Sunday, 12 June 2016**

**2 p.m. to 5.30 p.m.**

\*\*\*\*\*

**Cold drink on arrival**

**Afternoon Tea will be served at 3 p.m.**

**Raffle to be drawn at 5 p.m.**

**There will also be light entertainment.**

\*\*\*\*\*

**Tickets £5.00**

**Available from 1 May at the following locations:**

**Home Made Hour, Village Hall, Manor Road**

**(10.00 – 11.00 a.m. 7 May & 4 June)**

**Orchard Tea Room, Park Fruit Farm**

**By tel: Sandra 672453**

# Great Holland Methodist Church



## The story continues

The story of Easter has been unfolded, the twist ending has become a reality, and now the disciples and the world need to learn to live with this unexpected ending....

What does it mean to us and to them?

Dear friends, the Easter mystery is such a great mystery, that it cannot be contained to only one Sunday, it continues and continues and continues....

Sometimes, we read a book or are part of an event and when that finishes, it makes no difference to the person that we were before.

Not this time, not this story! This event has deeply changed the world!

To understand how it has changed the world, it might help us to travel back in time, in the time when Lazarus died and Jesus was not there to heal him when he was sick.

Jesus came 4 days after his death, and was met with tears and pain.

And in this context, Jesus said: 'I am the resurrection and the life!'

He said this straight after Martha told him that she believed in the resurrection of the last day. If she believed, what need was there for Jesus to make the statement above?!

A great need, because in that statement we find the truths of what Jesus' incarnation and resurrection mean to us.

Jesus said: 'I am the resurrection', and Jesus said: 'I am the life'. Both are important parts of the one statement.

Both invite us to look at the victory of Jesus at the cross, and to learn to live our lives on earth based on that truth.

Jesus' victory was not only for the future, it was for our present too.

For Lazarus, those words meant life in the here and now as well as the other side of eternity.

The gospel changed his present as well as his future.

The gospel has the power to change our present as well as our future.

Because of the Easter event, we can never be the people that we were before. Now we are shown a way of life and we are shown the way of the future.

Let us therefore live as Easter people, having experienced love like never before!

God's blessings,

Eva

# Off we Go!

## COACH TRIP TO OULTON BROAD AND LOWESTOFT - INCLUDES BOAT TRIP

Thursday 7<sup>th</sup> July

**NOW FULLY BOOKED!**

Pick up time from Great Holland Methodist Church will be approximately 9.00am. We will be taking a 1½ hour boat trip on Oulton Broad before our coach takes us on to Lowestoft, where you will have plenty of time to buy lunch and explore this seaside town.

Tickets will be £22, which includes cost of boat trip and coach only (not lunch). A **non-returnable** deposit of £10 is required. We will depart from Lowestoft at about 4.30pm.

To add your name to a waiting list, please telephone Anne on **675065**.

# FUN

## Forthcoming social events at Great Holland Methodist Church

Wednesday 20<sup>th</sup> April: 7.00 pm  
FILM NIGHT

We will be showing 'Chocolat' in the Church Hall.  
Free entry. Refreshments, including popcorn and ice-cream, will be available.

Wednesday 1<sup>st</sup> June: 7.00pm  
QUIZ EVENING WITH FISH & CHIPS

Tickets (£5.50) for this event need to be purchased in advance. To book your place, please telephone either Anne on **675065** or Ivan on **671811**.



### WEEKLY COFFEE MORNINGS

We hold weekly coffee mornings in Great Holland Methodist Church Hall. They take place **every Thursday morning from 10.30am - 12.00 midday**. Please drop in for coffee, biscuits, toasted teacakes and friendly company. We also have donated goods and hand made cards for sale.



# GREAT HOLLAND RESIDENTS ASSOCIATION

**Chairman:** Paul Fletcher-Tomenius **Vice-Chairman:** Robert Caines  
**Treasurer:** Denys & Lindy Strich **Secretary:** Louise Goodwin & Hazel Martin:  
**Planning Officers:** John Poulton, Tom Sandy & Eddie Forrest

Dear Friends,

Our AGM is coming up in May and our two secretaries, Hazel and Louise would like to hand over to someone else or to two people, so that the job can be shared as now. Please help by volunteering. It is not very burdensome and consists mainly of sending out an agenda for the four meetings a year and preparing minutes for our records. The latter do not have to be very long, just headings of what was discussed and any decision made. If you are not happy about talking to large groups, that is not something that the secretary has to do. We really do need your help here.

At our last meeting, we passed a resolution unanimously, condemning the way in which local objections to development (including those of Frinton & Walton Town Council) were routinely ignored, even if well formulated and valid planning objections that could be defended on appeal.

Initially, I sent this to Ian Davidson, CEO of Tendring District Council, asking him to circulate Planning Committee members. This seemed a reasonable way of proceeding. However, after a couple of weeks, I had heard nothing and therefore emailed the resolution, with a short accompanying letter, to each member of the Committee individually. The members are elected councillors, of course, not council officers.

Naively, it would now seem, I expected a few replies, possibly by a majority of those eleven people. I received ONE! One of the councillors was so disturbed by my impudence that she felt it necessary to seek professional advice from the Monitoring Officer, an employee of the council with the function of ensuring compliance with appropriate standards! I was told this advice had been sought, but I have received no other communication since and so I can only assume the advice was to ignore my email!

We need to ponder the significance of this experience. I know we have all experienced arrogance and other arbitrary behaviour by politicians over the years, both at national and local level, but the significance of this is really worrying. We expressed concern that our views were not being treated seriously or with respect. We did this politely and through the function of a legitimate, local organisation, the Great Holland Residents Association. Yet, the CEO and ten out of eleven members of a council committee still feel no need to even respond, not even on the obvious level of rejecting the criticism, which it is their privilege to do.

At the moment, I really do not know what to do next. There are other planning applications pending. The development of Great Holland Nursery comes up next month and we already know that the

planning officer concerned will recommend acceptance. From The Cottage application, we also know there will be no discussion of any consequence on the planning principles involved and that it will be voted through unanimously again. We have provided carefully argued planning criteria why it should be rejected, as has the Town Council, but the refusal of members of the Planning Committee to respond to our concerns means the end result is a foregone conclusion.

When we moved to the village in 2013, a neighbour said to me, "You know what TDC means, I suppose? The Developers Council!" I thought at the time there was an element of exaggeration. I was wrong. He was right!

My strongly held view has always been that party politics have no place in the majority of local government decisions, because they are concerned with various aspects of managing our local communities in a sensitive way, maintaining services and infrastructure and generally helping to keep life pleasant and in keeping with our expectations. Above all, those objectives mean listening to people and their local representatives. Tendring District Council simply does not see things this way. It has developed a profound, impenetrable culture of contempt and arrogance towards local opinion. It resents challenge. It refuses debate. It is not fit for democratic purpose.

Please attend our AGM.

Best regards to you all,

Paul Fletcher-Tomenius  
Chairman GHRA

\*\*\*\*\*

## **MISCELLANEOUS INFORMATION .....**

### **Great Holland Residents Association**

A reminder that the AGM will take place on Saturday, 14 May at 10.30 a.m. in the Village Hall, Manor Road.

### **Essex Watch Liaison Officer, Tendring**

Paul Teague has left Essex Police after 11 years of service. Therefore the Neighbourhood Watch bulletin will no longer be issued until such time as a replacement has been appointed in the foreseeable future. For any Neighbourhood Watch enquiries please email: [tendringnhw@outlook.com](mailto:tendringnhw@outlook.com).

### **Adept Design & Construction**

The above company, formerly of Claire Road, Kirby Cross, has moved into new premises at Unit C, Newhouse Farm, Clacton Road, Horsley Cross, CO11 2NZ. Tel: 01255 871475. This is the company that kindly made the notice board outside the Village Hall.

## **STREET MEETS IN GREAT HOLLAND HAVE BEEN DISCONTINUED DUE TO LACK OF INTEREST**

(Please see below for alternative locations)

### **INCIDENTS .....**

I am unable to include all incidents that have been reported due to their sensitive nature (reports from 18/01/16 – 12/03/2016).

**Suspicious circumstance** : While on patrol in Pork Lane came across an alarm sounding and downstairs window open. Checked property which was all in order and owners were contacted. Window may have been left open by accident.

**RTC** : Pork Lane

**Highway disruption** : Lorry in a ditch

**Alarm sounding** : All in order

**Suspicious males in the area** : They were out looking for some dogs. These males had been arrested earlier that day for hare coursing.

**Motor vehicle found** : Had been stolen from Thorpe the night before.

**Obstruction and concern for welfare**

### **OTHER .....**

#### **Street Meets**

Due to lack of attendance at the Gt. Holland Street Meet it has been decided to cancel this event. However, you can still come along and see your PCSOs at the following locations:

Frinton Triangle : Every Monday weekly : 10.00 a.m. – 11 a.m.

Walton Project Office (High Street) : 10.30 a.m. – 11.30 a.m. on Wednesdays weekly

Frinton Library (Old Road, Frinton) : 10.30 a.m. – 11.30 a.m. Fridays weekly  
(Teas and coffees are available at this meeting)

#### **Review of PCSOs**

Following a recent review 5 of the 6 current PCSOs in our area have been retained by Essex Police. The officer who will be leaving will be replaced by one from Clacton.

#### **Miscellaneous**

Don't forget you can follow me on TWITTER under PcsO Paul BRASSEY. I keep my page updated in respect of any crime trends or give advice.

Also, if anyone is interested in joining the Community Speed Watch please contact me for information. We have quite a few volunteers now who do an excellent job in the community giving up a few hours a month.

\*\*\*\*\*

You can contact either me or Michele by calling 101, Extension 487553, or by email (see below).

Keep safe.

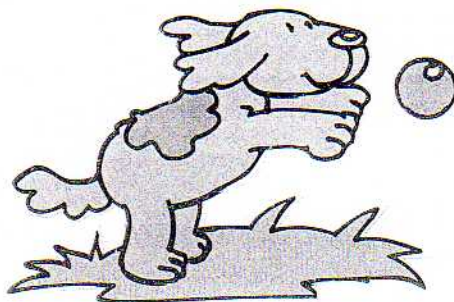
**PCSO 70843 Paul Brassey**  
**PCSO 6477 Michele Diss**  
**Walton Police Station**  
**Martello Road**  
**Walton-on-naze**

[paul.brassey@essex.pnn.police.uk](mailto:paul.brassey@essex.pnn.police.uk)  
[michele.diss@essex.pnn.police.uk](mailto:michele.diss@essex.pnn.police.uk)



**From Wednesday 6<sup>th</sup> April 2016**

**it will be a legal requirement for all dogs in the UK to be microchipped**



### **What is microchipping?**

A small microchip has its own unique code, which can be used as a tracker to reunite dogs and their owners (or 'keepers' under the new law). It's a quick procedure to insert a microchip under the dog's skin. The unique code is linked, on a database, with the keeper's contact details. Keepers must ensure that their registered details are kept up to date, including if they move house or change contact details.

### **At what age do puppies need to be microchipped?**

There is no minimum age specified in the regulations. However, the government advises that the dog be healthy enough to be implanted, and sufficient time is allowed for the database to process the registration, in order to ensure compliance with the regulations by the time the dog is eight weeks old.

### **Who will enforce the new law?**

Anyone authorised in writing by a local authority, police and PCSOs will enforce the new law.

### **What is the penalty for not getting your dog microchipped?**

Keepers will be served a notice ordering them to microchip their dog within 21 days or face being fined £500 and potential criminal prosecution. Those not updating their details on the database could also receive a notice and may be liable to pay a fine. If any keeper subsequently moves or changes contact details but fails to update their details, then the dog is no longer considered microchipped under the regulations and enforcement can be taken and a notice served. A keeper who fails to update those details within 21 days of the served notice will be liable to pay a fine of £500.

### **Where can I get my dog microchipped and how much does it cost?**

You can arrange an appointment with your veterinary practice, which will charge a fee to microchip your dog(s).

**Alternatively, Tendring District Council's Dog Warden Service is currently able to provide a FREE microchipping service, as the Dogs Trust has provided the Council with free microchips.**

**To find out more, please contact the Dog Warden Service on:  
01255 686787 or email [aeast@tendringdc.gov.uk](mailto:aeast@tendringdc.gov.uk)**

### **I'm selling my dog, what do I need to do?**

You must microchip the dog and it is recommended that you also register the details of the new keeper, but it is the new keeper's responsibility to ensure that his/her contact details are registered.



# VILLAGE HALL GREAT HOLLAND COMMITTEE of MANAGEMENT

## ORDINARY COMMITTEE MEETING AT THE VILLAGE HALL ON 6th FEBRUARY 2016

**PRESENT:-** Sue Jenkins (Chairman), Sheila Watts (Treasurer), Jim Stuart (Secretary), Veronica Stack, David Martin, Tim Reynolds, Robert Bucke and Coralie Harris

**APOLOGIES:-** Chris Keston

**MATTERS ARISING FROM LAST MINUTES** There were no matters arising and the minutes were agreed and signed

**THE QUEEN'S 90th BIRTHDAY CELEBRATIONS** We are to hold an afternoon tea in the hall to celebrate the birthday on 12<sup>th</sup> June 2016 . We are to set up a committee to oversee preparations and to agree a price.

**NEW BANK ACCOUNT** It was proposed that we open a new bank account with The National Westminster Bank. This will enable us to set up direct debits and get a reduced price for our electricity supply. The new signatories are to be Sue Jenkins, Sheila Watts, David Martin and Veronica Stack with any two to sign. If we can set up on line banking with dual release we will arrange this. Otherwise we will stay with cheques. A resolution to this effect was proposed and seconded and passed unanimously.

**OUR CONSTITUTION** A further copy of our new constitution was distributed to all and is to be ratified at our next meeting.

**GAS AND ELECTRICITY** We are tied in with EON for the next year and are getting a good deal. We are to look into other suppliers for gas to see if we can better the current tariff.

**TREASURER'S REPORT** We currently hold the following funds:

<b>Current Account</b>	2863.01
<b>Savings Account</b>	5214.63
<b>Bond</b>	5297.63

We are to consider adding further funds to the bond to increase our income but will not fix it for more than one year.



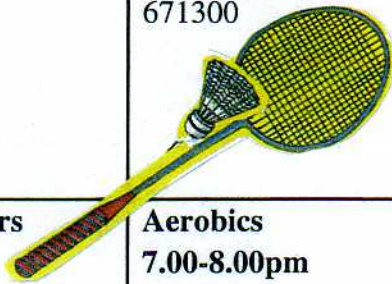
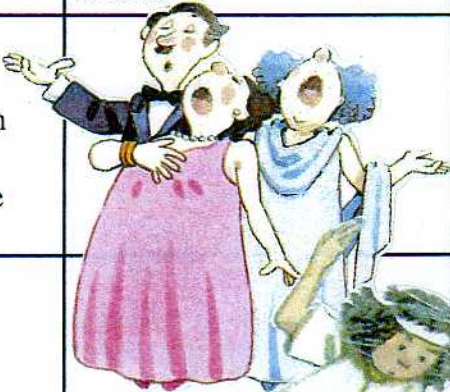
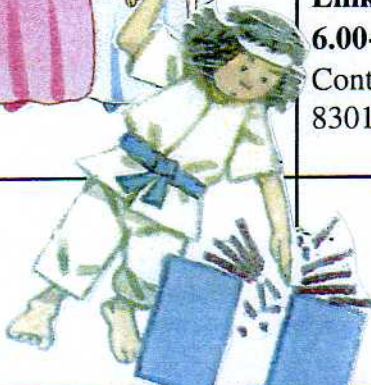

**REFURBISHMENT OF PART OF THE ROOF** We are to have the roof and the woodwork over the kitchen and toilets checked. We believe that refurbishment costs will be of the order of £7000.00 and are to look into any grants that may be available to assist us with these costs. Additionally we are to obtain four quotes (to include lining the proposed new section) and will discuss the matter further when these have been received.

**ANY OTHER BUSINESS** We have been requested to fix one of the blinds in the hall and replace a bulb in the light outside the toilets. All committee members have indicated that they are prepared to serve for a further year. We have agreed to join a national village hall society which will keep us up to date with changes in the law and indicate areas where we can approach various agencies for grants etc.

**DATE OF NEXT MEETING** Our next meeting will be on **28<sup>th</sup> May** in the hall at 10.00am followed by our AGM at 11.30 am.

# WHAT'S ON IN YOUR VILLAGE HALL?



Day	Morning	Afternoon	Evening
Sunday			
Monday		<b>Tendring Male Voice Choir</b> <b>3.00-4.30pm</b> Contact: Ilze 813909 	<b>Cardio Vascular</b> <b>6.45-7.30pm</b>  <b>Pilates</b> <b>7.30-8.30pm</b> Contact: Claudine 862505
Tuesday	<b>Fantari Dance and Fitness</b> <b>9.30-10.30am</b> Contact: Sarah-Jane 688740  <b>Gentle Tai Chi with meditation</b> <b>11.00am-12.30pm</b> Contact: Ruth 07724 133702	<b>Carpet Bowls</b> <b>2.00-4.00pm</b> Contact: Les Miller 671214	<b>Links Karate</b> <b>5.30-7.30pm</b> Contact: Paul Harris 830136  <b>Badminton</b> <b>9.00-10.30pm</b> 671300 
Wednesday		<b>The Coastal Singers (mixed voices)</b> <b>2.30-4.30pm</b> Contact: Ilze 813909	<b>Aerobics</b> <b>7.00-8.00pm</b> Contact: Claudine 862505
Thursday	<b>Tai Chi</b> <b>9.30am-12.30pm</b> Contact: Des Exworth 679610 (additional classes are available)		<b>Belly Dancing</b> <b>7.00-8.00pm</b> Contact: Almeira Carmichael 07900 241630 / 01255 678297
Friday	<b>Beginners Tap</b> <b>11.15am-12.15pm</b> Contact: Ester Altin 07785 728920		<b>Links Karate</b> <b>6.00-8.00pm</b> Contact: Paul Harris 830136
Saturday	 <b>Home Made Hour</b> <b>10.00-11.00am</b> 1 <sup>st</sup> Saturday of the month (NOT January, February, August or October)		

### Rate for hire of Village Hall

£10 per hour. Please contact Coralie Harris on 830136 to book. (Email: [coralieh@live.co.uk](mailto:coralieh@live.co.uk))

Updated January 2015

Neither the Rector, Church Wardens, Parochial Church Council nor the Editors take responsibility for the information given in, or views expressed in, the "Great Holland Village Voice". Nor is any culpability accepted for work done by advertisers.

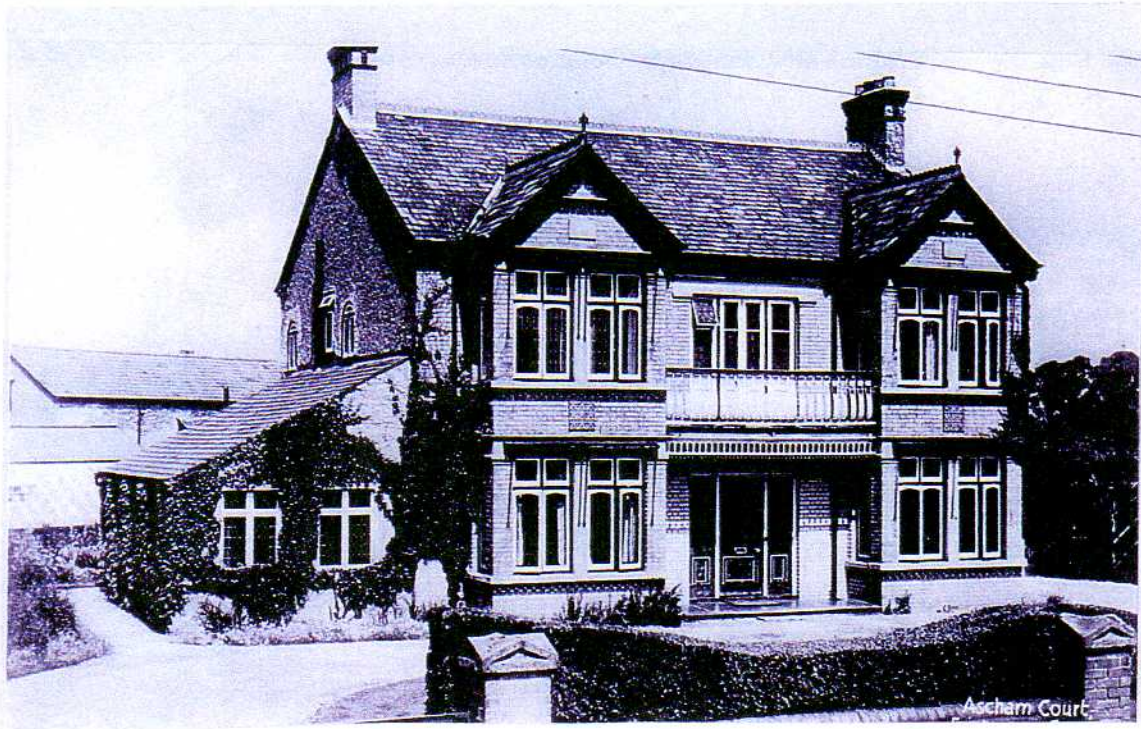
## FROM THE ARCHIVES .....

### THREE HOUSES IN THE KIRBY ROAD

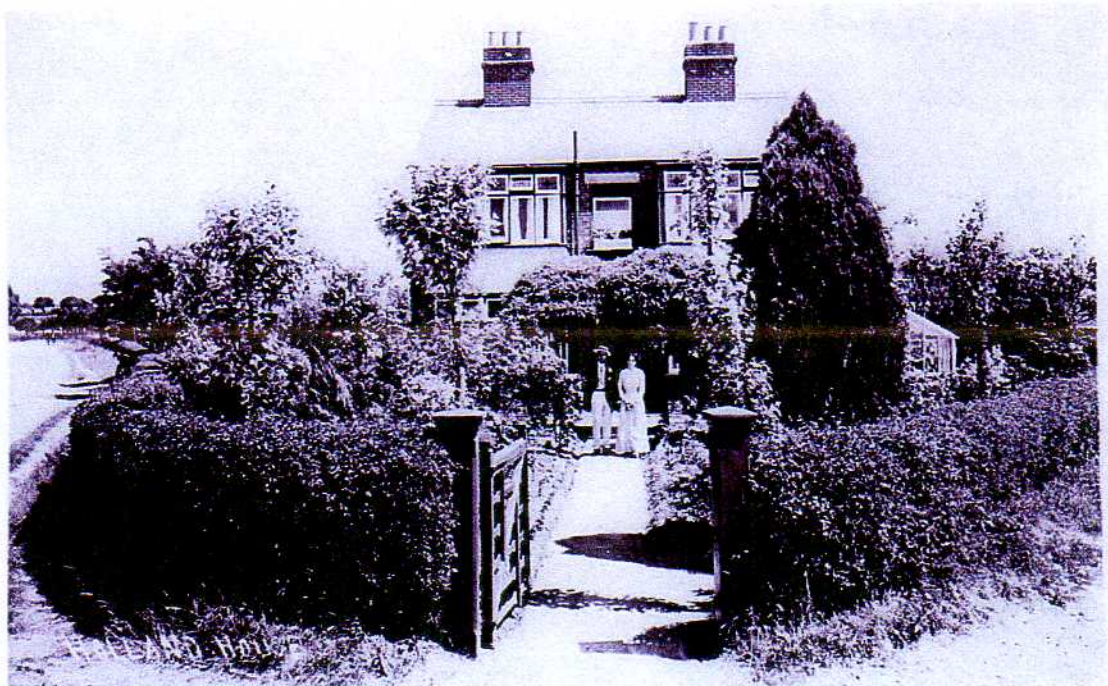
The first, and probably the oldest, is the little row of two sets of semi-detached cottages, nos. 1 – 4 Kirby Road. It may seem odd to be so numbered in the middle of all the other houses in the road, but before the Enclosure Act of 1849 Kirby Road began at the Railway Bridge, known as Kirby Heath, and ended at Green End Lane. Great Holland Green stretched from the Crescent as far as Green End Lane (hence the name), and a field width on either side of the road, which was but a track across the Green (a total of 58 acres). The cottages were built c.1720 and some of the oldest in the village. Each building had two bedrooms, a living room and a kitchen, which had a small built-in pantry below the stairs. A well between no. 3 and no.2 supplied water to the four cottages. A walkway at the rear enabled the four buildings access to the well.



The second building (see over) is now known as 'High Trees'. It was first recorded in 1912 as 'Gunga-din' and owned by William Andrew, florist. It was for sale in 1922, being advertised as ".... the house is built of white brick with slate roof and creeper clad, is approached by a Carriage Drive ....."The out-buildings comprised of three brick and slated Model Pigstyes; Meal House; Chauffeur's Cottage; Good Garage; two Loose Boxes with Apple Room above; timber and slated Potting Shed; Wood Shed and Open Shed; three good Greenhouses; Chicken House and Fowl Run. Full-sized Tennis Court; good orchard, flower beds and well stocked vegetable garden. By 1925 it was recorded as 'Ascham Court' and was the property of Mr. Wilson, who owned Ascham College in Walton and Clacton. After W.W.II Major & Mrs Hine bought the property (by 1948) and again the house was re-named 'High Trees'.



The third house in this little group is Holland House. At the turn of the 1900's this house had lovely tea gardens which were run by Mr. & Mrs. Miller. There were tennis courts behind this house where now is the new development. A sad story comes to mind. It was reported in the local paper on 9 December 1911 that "Mr. J H Miller, proprietor of the Holland House Dairy, Great Holland and a well known Essex farmer, died suddenly on Tuesday evening. An hour before his death Mr. Miller was driving with Mr. Ratcliffe jun. in the Kirby district. His sudden demise has occasioned great regret.



# Bumblebees

The days are warming up, and I have already seen three Bumblebee queens. This is a good time to look for them because there are only queens this early; it gets confusing when variable size workers, males with different colour patterns, and more species appear as the season progresses. Each queen will have mated late last summer, and it will be looking for cavities such as mouse holes, in which to nest, occasionally stopping to take nectar from suitable flowers. Energy rich nectar is one of the chief requirements to affect bumblebee numbers. They are adapted to cooler parts of the world, and can be considered to be almost warm-blooded. They do rapid wing beats which generate heat, rather like shivering, enabling them to start their year early; they have much to do to complete their life cycle. But only certain flowers will do, and such suitable ones are needed through the whole season!

Having found a suitable nest, the queen starts laying eggs, all of which will develop as females, and this requires more flowers, more nectar, for more energy. As these hatch they become workers taking over most of the supply of nectar to the nest, leaving the queen more time to lay eggs. Unlike honeybees the peak colony size may be as few as 50 workers and rarely more than 500. At a certain time, when enough pollen and nectar have been stored in the nest, the queen produces eggs which are destined to become male bees and some to be new queen bees. These eventually disperse from the nest, the new queens mostly being evicted by the bossy original queen, though fights and fate can cause power struggles which leave a new queen in charge.

Most British species but not all, only produce one generation per year, so by the autumn there will only be new generation queens left, having been mated hopefully by an unrelated male, and these fatten up for hibernation. A lot of events can go wrong and some nests fail to reach the point of producing males and new queens. There are other bumblebee species that become parasites of nests, the mated female doing no nectar and pollen gathering, but simply slipping into another nest and dropping in some eggs unnoticed, cuckoo fashion. There are also fungal and viral infections, predation by birds and badgers, parasitism by wasps, and other hazards.

Those hazards have always been around, but bumblebee numbers have fallen drastically in recent decades. There is mounting research evidence that the neonicotinoid pesticides widely used in farming and gardens can have a profound negative effect on colony success, much greater in fact than on honeybee colonies. Probably of equal significance is the fact that there are far fewer flowers nowadays in the general environment. Bumblebees forage in wide ranging paths, taking nectar from several suitable species, usually ignoring flowers close to their nest. Moreover the colony needs a succession of suitable flowers throughout the long season.

There are probably around Great Holland seven bumblebee species, and maybe two cuckoo bumblebees. The other species are rare and probably extinct in the area. These were species that need flowers where the nectar is deep in the flower, so have long tongues. Two of the remaining species also need such flowers which include Red Clover, Foxglove, Red and White Deadnettle, and Yellow Rattle, all of which occur at Great Holland Pits but are scarce in most places. Good plants for other species include willows, chives, heathers, lavenders, comfrey, blackberry, beans, raspberries, scabious, honeysuckle, and michaelmas daisy. These are all plants which would provide nectar in the bee's lengthy forage journeys through people's gardens. Of no use however are many modern cultivars such as those with double petals.

The government have embarked on a pollinator strategy, because pollination of crops is essential in agriculture. Bumblebee nests are imported into the country to place in greenhouses as tomatoes greatly benefit. Relatively recently it was discovered that tomatoes drop pollen in response to the buzzing of bumblebee wings. There are many pollinators. Honeybees contrary to popular belief are not as effective at pollination of many plants, as are the many small bees, and hoverflies, which need a myriad of different options to get them through their life cycle. So as the weather warms up I encourage people to plant a few suitable flowers to provide stepping stone feeding places in their gardens.

I recommend a compelling book called 'A sting in the tale', by Dave Goulson, a person who continues to discover more about these insects, and advise about how we might encourage them. The BBCT web site also has information about promoting bumblebees as well.

**Holland Pits open day with pond dipping this year is on 29<sup>th</sup> May, starting at 11:00am.**

**Bob Seago**

Warden

## **Frinton & District Horticultural Society**

Our meetings take place at Frinton Methodist Church Hall in Fourth Avenue  
7.15 for 7.30pm

**Thursday 7<sup>th</sup> April**

**'Container Growing of Fruit, Flowers and Vegetables'**

Peter Morris

**Competition: Daffodil Bulb in Bloom**

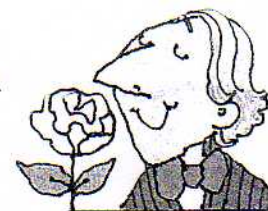
## **SPRING SHOW**

McGrigor Hall, Fourth Avenue, Frinton-on-Sea

**Saturday 16<sup>th</sup> April**

Open to the public: 1.30pm

Prize giving: 3.00pm



**Thursday 5<sup>th</sup> May**

**'Over the Garden Wall'**

A sketch by John Allsop

**Competition: A Specimen Tulip**

If you are interested in joining the Society, please come to one of our meetings or contact the Membership Secretary (Linda O'Reilly) on 852195 for further details. Our annual membership subscription is £7.

**Dr Carla Mahmoud**  
**Dr Mathew Kattukaran**

Tel: 01255 861850  
Fax: 01255 860330



**Thorpe-le-Soken Surgery**  
**High Street**  
**Thorpe-le-Soken**  
**Essex CO16 0EA**

**THORPE and KIRBY SURGERY NEWSLETTER**  
**APRIL 2016**

Greetings once again from Thorpe and Kirby Surgery. I am sorry there was no newsletter last month; unfortunately I was off sick at the cut-off point for publication. However normal reporting has resumed. We have had an exceptionally busy start to the year.

As some of you will know we had our CQC inspection in December and the long awaited report has finally arrived. I am delighted to report that in five out of six areas we achieved a good rating and one area outstanding. With the current demands on the NHS as a whole and us as a surgery this has been achieved through hard work and dedication by all the clinical and administrative staff. Obviously there is always room for improvement and we strive to provide the best service we can for our patients. There is a part that you can play too, by only making appointments when necessary after perhaps using over the counter remedies or for more serious conditions, by always turning up for appointments or advising us in plenty of time that you can't. You might be interested to know that yesterday (Monday 7<sup>th</sup> March) we had 11 patients that did not attend their appointments, the same day that we were forced to refer patients to the walk-in-centre as we had no appointments available! 11 appointments accounts for almost two hours of wasted clinical time.

In the most recent MORI poll as published in the local Gazette, Thorpe and Kirby have scored extremely highly at 97% patient satisfaction overall. Again this kind of rating can only be maintained by careful use of the service by patients and keeping expectations at a reasonable level. The financial constraints on the NHS do not allow for a limitless supply of appointments and the possibility of small surgeries being combined to form large medical centres that are some miles from where patients live remains a very real concern.

Unfortunately due to our current funding arrangements we have needed to review all our services and cut those for which we receive no funding at all. This will mean that we are no longer able to provide 8am to 8pm cover five days per week. The surgery will be open until 8pm on Mondays and Thursdays only and will shut at 6.30pm Tuesday, Wednesday and Friday. The telephone lines will close at 6.30pm every day and patients will need to call 111 after this time. Additionally the Kirby Branch will close at 1.30pm every day but there will be no loss of appointments at Kirby, they will be consolidated into the mornings. Kirby patients will still be able to be seen at Thorpe in the afternoons.

We will also be ceasing some procedures that are un-funded, although this will affect a small number of patients who will be referred to other providers for those services. Obviously these cuts have had an effect on our dedicated staff and our reception staff particularly will be affected by the change in opening times. I ask that all patients show some understanding of the difficult position that they are in when explaining that we are not able to meet demand from time to time, there have been a number of cases recently where staff have faced verbal abuse from patients for doing their very difficult job.

We do have a zero tolerance to abusive behaviour and any patient that does not show respect to any member of the surgery team will be asked to leave our list and register elsewhere.

The Patient Participation Group will be holding their next public meeting on Wednesday 20<sup>th</sup> April at Thorpe Le Soken Sports and Social Club at 7pm. They will be discussing the various reports and the changes we have made to the way the surgery operates. This is your opportunity to have your voice heard by the surgery management and meet the PPG who work with the surgery to improve our services.

I look forward to seeing our patients at that meeting.

(Karen Austen, Practice Manager)

---

Branch Surgery: 88 Frinton Road, Kirby Cross, Essex CO13 0HJ

Email: [thorpelesoken.surgery@nhs.net](mailto:thorpelesoken.surgery@nhs.net)  
Website: [www.thorpe-le-sokensurgery.nhs.uk](http://www.thorpe-le-sokensurgery.nhs.uk)

VAT No: 879 1018 03

# FRINTON FESTIVAL

*Beautiful music performed by inspired musicians.*

**Thursday 2<sup>nd</sup> June at 7.30pm**

## **STRING QUARTETS**

*by Beethoven, Wolf & Saint-Saëns across the fields in All Saints, Great Holland.*  
Free tickets for those aged 8-25 supported by the CAVATINA Chamber Music Trust.

**Saturday 4<sup>th</sup> June at 4pm**

## **FAMILY CONCERT**

*featuring local schoolchildren alongside top professional musicians in St. Mary's Parish Church.*  
*Saint-Saëns beloved **Carnival of the Animals**, music by Beethoven & Ravel,*  
*& a new work written especially by Ronald Corp OBE.*  
Free tickets for those aged 8-25 supported by the CAVATINA Chamber Music Trust.

**Sunday 5<sup>th</sup> June at 7.30pm**

## **3VC**

*Three singing cellists in McGrigor Hall. An eclectic mix ranging from Coldplay to Vivaldi,*  
*Hendrix to Beethoven with a little Sound of Music thrown in along the way.*  
Ticketholders can enjoy a free WINE TASTING courtesy of WHEELERS WINE CELLAR from 6.30pm.

*Tickets (which are on sale now) cost £18 and include a free programme and glass of wine in the interval.*

Email [frintonfestival@gmail.com](mailto:frintonfestival@gmail.com)

or call 01255 319141. Full details of Frinton Festival 2016 at

**[www.frintonfestival.com](http://www.frintonfestival.com)**





## Tending First Ladies

We welcome everyone to this friendly group that usually meets on the **first** Monday of each month - although this can vary due to Bank Holidays - at the Methodist Church Hall, Frinton (corner of Ashlyn's Road/Fourth Avenue). **Meetings start at 2.30pm**. We charge £2.00 entrance at each meeting to cover the cost of the room hire. A speaker talks for about 30 minutes and then tea and homemade cakes are served. There is also a raffle.

### OUR NEXT MEETINGS IN THE CHURCH HALL WILL BE:

**Monday 4<sup>th</sup> April:**  
**Welcome to Spring Afternoon**

**Monday 9<sup>th</sup> May:**  
**Plant Sale organised by Anne Oxley**



For more details please contact Fiona Robertson:  
01255 679006 or e-mail [fiona348@btinternet.com](mailto:fiona348@btinternet.com)

## Friends and Neighbours of Great Holland

Our next meetings will be on **Thursday 7<sup>th</sup> April** and **Thursday 5<sup>th</sup> May** at 2 Great Holland Court (opposite the Village Hall), at 2.00pm. Everyone is welcome for tea, a chat and to plan activities for future meetings. You can bring your knitting or sewing if you wish.

Phyllis Margetts  
851118

## Frinton & Walton Postcard Club

Although this Club was started for those who collect, or are interested in, postcards, you do not have to have this as a hobby to join our friendly social evenings and enjoy the talks/presentations given by guest speakers on a wide variety of subjects. Visitors and potential new members will be made very welcome. The entrance fee to our meetings is £2, which includes refreshments.

**Our meetings take place at St Cedd's Hall, Old Road, Frinton-on-Sea at 7.30pm**

**Tuesday 12<sup>th</sup> April**  
**London as seen by artists on postcards**  
Steve Kentfield

**Tuesday 10<sup>th</sup> May**  
**Theatre and Music Hall in postcards**  
Christine and Tom Carr



Please telephone Margaret Wilsher on 674134 for further details

# THE HEDGEHOG HAVEN

Carers: Frinton Christine 07709 - 767511  
Colchester Liz 07847 - 1382372  
Website: [www.hedgehoghavenessex.co.uk](http://www.hedgehoghavenessex.co.uk)

Registered Charity No. 1138493

## WHAT TO DO IF YOU FIND A SICK, INJURED OR

### ORPHANED HEDGEHOG

Hedgehogs are **nocturnal** they should not be out during the day. If you see one out in daylight it's probably in trouble [even if it just appears to be sleeping on your lawn] pick it up immediately by carrying out the following:

- Use a pair of gardening gloves or towel to pick it up, put it in a high sided box lined with paper **BEFORE YOU RING** us, as it may crawl away and hide.
- Fill a hotwater bottle with warm [**not boiling**] water. Wrap a towel around the bottle and place in one end of the box covered. [this will prevent hog being scalded]
- Feed with meat based cat food [not fish or meat in gravy] or cat biscuits and a small bowl of drinking water. **Never give a hedgehog cow's milk** it could cause diarrhoea and dehydration, even death
- Ring one of the carers listed above as soon as possible. Please do not keep it for a few days before ringing us. The sooner you get it to us the more chance it has to survive

If you see a hedgehog in the road at night stop and assist it across if it is safe to do so. A hog will often curl into a ball as it senses danger, this unfortunately will not protect it from cars.

Hedgehogs need to weigh at least 600 grams to have a chance of surviving hibernation. If you see a small hedgehog in the autumn, secure it as above and ring one of the carers listed, for advice.

If you disturb a nest with hoglets, reinstate the nest taking care not to leave your scent on nesting material or hoglets by wearing gloves. Ring a carer as soon as possible.

PLEASE TAKE ALL EMERGENCIES TO A LOCAL VET

## HAZARDS

### Bonfires/Compost Heap

Always check the base of bonfires, whenever possible re-site them before lighting or do not build bonfires until the day you intend to burn it. Also take great care when forking over the compost heap. Hedgehogs like to hibernate and/or sleep in them during the day.

### Pesticides & Slug Pellets

Many pesticides contain poisons that are deadly to hedgehogs. Slug pellets contain metaldehyde that will kill hedgehogs and birds. If your hedgehog is not offering enough control of pests, ask your local garden centre for wildlife-friendly products.

### Strimmers & Lawn Mowers

This machinery will cause the most horrendous injuries. If you find a hog with strimmer injuries please **take him to a local vet immediately**. Always check the area before commencing work, including under hedges and in all long grass.

### Ponds & Swimming Pools

Although hedgehogs can swim they need graduated sides to climb out of the water. A ramp/stepped sides or a couple of pois to scramble upon will help. If they don't have an escape route they will **drown**.

### Drains

Keep drains covered so that hedgehogs do not become stuck down them.

### Wire Mesh & Netting

Never leave unused mesh or netting lying around. Allow a gap of about 1 foot at the bottom of any netting, so hedgehogs can pass underneath. They sustain terrible injuries when trying to escape, if they have become entangled. If you find a hog entangled do not attempt to remove netting instead **PLEASE** cut a hole in the netting with the hog attached and take it to a vet so he can release & see any sustained injuries. Use pegs to clip up football and tennis nets when not in use.

### Hibernation

If you disturb a hibernating hedgehog, simply cover it up again and leave it there.

### Fleas

Hedgehog fleas are host specific, therefore, cannot survive on humans or other animals. Not all hedgehogs have fleas.

### Rubbish

When putting out your household or garden waste try to place the bags on top of recycling boxes or off the ground. This will prevent hedgehogs climbing into the bags and being crushed as waste in the dustcarts. Crush tins, cut plastic pots and plastic holding rings so they cannot get stuck/entangled in them.

### Elastic Bands

If you see your postman/woman littering the streets with these, please remind them this is an offence and is subject to a fine. Hedgehogs have sustained horrible injuries when becoming entangled in them.

PLEASE HELP HEDGEHOGS BY FOLLOWING THESE TIPS

# Kirby & Great Holland Book Club ...



... meets in the Parish Room (next to All Saints' Church, Church Lane, Great Holland) on the **4<sup>th</sup> Monday of the month, from 10.00-11.00am**. The Club has space for two or three more members. Men would be particularly welcome!

For more information, please telephone Jenny Wills on **673647**.



Frinton Community Centre  
Soken House  
The Triangle  
Frinton-on-Sea

## Matinee Club

Matinee Club is a Friendly, Social Club which is non-profit making and organised & run by volunteer members.

A variety of different events are run throughout the year including:

Theatre Shows (West End & Local)

Holidays (Home & Aboard)

Outings to places of Interest

Social Events

Matinee Club Members meeting held on

1st Thursday monthly

If you are interested in joining or require any more information do call in on Monday morning 9.30-12.00pm

Or Contact:

LORRAINE

PAULINE

PETER

ROSEMARY

01255 678 507

01255 670 583

01255 671 977

01255 671 776